



# Silver Viper Minerals

*Executing Mexico's Largest Junior Exploration Program  
to Expand and Discover High-Grade Silver and Gold*

**TSX**  
**Venture50**<sup>™</sup>

2026

TSX.V: **VIPR** OTCQB: **VIPRF**

# Forward Looking Statements



## Cautionary Note to US Investors

The United States Securities and Exchange Commission ("SEC") permits US Mining companies, in their filings with the SEC, to disclose only those mineral deposits that a company can economically and legally extract or produce. We use certain terms in this presentation, such as "measured", "indicated", and "inferred" resources, which the SEC guidelines strictly prohibit US registered companies from including in their filings with the SEC. Any estimates of mineral resources shown in the Silver Viper Minerals Corp. presentation have been prepared in accordance with definition standards of the Canadian National Instrument 43-101 Standards of Disclosure for Mineral Projects ("NI 43-101"), which may differ from definition standards of the United States Securities and Exchange Commission ("SEC") Industry Guide 7.

## Qualified Person

All technical content found in the Silver Viper Minerals Corp. presentation has been reviewed & approved by Ben Whiting, P.Geo., Technical Advisor of Belcarra Management Group Ltd. and a Qualified Person under Canadian NI 43-101 Standards of Disclosure for Mineral Projects.

This presentation of Silver Viper Minerals Corp. (the "Company") contains "forward-looking information" within the meaning of the United States "Private Securities Litigation Reform Act of 1995" and applicable Canadian securities legislation. Statements containing forward-looking information express, as at the date of this presentation, the Company's plans, estimates, forecasts, projections, expectations, or beliefs as to future events or results and Silver Viper does not intend, and does not assume any obligation to, update such statements containing the forward-looking information.

Generally, forward-looking information can be identified by the use of forward-looking terminology such as "plans," "projects," or "projected," "expects," or "does not expect," "is expected," "estimates," "forecasts," "scheduled," "intends," "anticipates," or "does not anticipate," or "believes," or variations of such words and phrases, or statements that certain actions, events or results "may," "can," "could," "would," "might," or "will be taken," "occur," or "be achieved." Statements containing forward-looking information include, but are not limited to, statements with respect to the anticipated economic returns of any of the Company's projects, the expected results from exploration activities, the economic viability of the development of newly discovered ore bodies, the accuracy of mineral resource estimates, future production levels, the requirements for additional capital, the results of drilling, and Silver Viper's commitment to, and plans for developing, newly discovered and existing mineralized structures.

Statements containing forward-looking information involve known and unknown risks, uncertainties and other factors that may cause the actual results, level of activity, performance or achievements of Silver Viper Minerals Corp. and its operations to be materially different from those expressed or implied by such statements. Such factors include, among others, the actual results of current exploration activities, future prices of silver and gold, unpredictable risks and hazards relating to the development of our projects, and the speculative nature of exploration and development. Although the Company has attempted to identify important factors that could cause actual results to differ materially from those contained in forward-looking statements, there may be other factors that cause results to be materially different from those anticipated, described, estimated, assessed or intended. There can be no assurance that any statements containing forward-looking information will prove to be accurate as actual results and future events could differ materially from those anticipated in such statements. Accordingly, undue reliance should not be placed on statements containing forward-looking information.

# Executive Summary



## La Virginia



- **Ownership:** 100%
- **Acquisition:** From Pan American Silver
- **Key Targets:** Intrusive dykes, breccia zones (epithermal)
- **Historical Drilling:** 52,000 m
- **Discoveries:** El Rubi
- **Geophysics:** 2022 Titan MT survey → new anomalies
- **Resource (2021):**
  - **Indicated:** 154k oz Au @ 0.78 g/t, 6.92M oz Ag @ 35 g/t
  - **Inferred:** 260k oz Au @ 0.8 g/t, 12.94M oz Ag @ 40 g/t
- **2025 Plans:** Expand El Rubi, test other targets, update resource

## Coneto



- **Ownership:** 100% (pending early 2026 close)
- **Acquisition:** Ores Minerals & Fresnillo Plc
- **Area:** 4,995 ha
- **Features:** 40+ known epithermal veins, centuries of production
- **Infrastructure:** Excellent, strong community support
- **Historical Exploration:** US\$6M by Fresnillo
- **Resource:** 286k oz Au @ 1.67 g/t, 19.1M oz Ag @ 112 g/t → 538k Au-equivalent oz @ 3.15 g/t
- **Plan:** Systematic exploration for district-scale & depth potential

## Cimarron



- **Ownership:** 100%
- **Type:** Gold-Copper porphyry + high-sulfidation epithermal
- **Location:** Mineral belt from Arizona → Jalisco
- **Resource:** Historical 77,381 oz Au
- **Strategic Value:** Adds scale & high-quality district exploration

Fully Owned & Permitted



Management and Expertise



High-Grade Gold and Silver Discoveries



Previous Exploration Work



Multi-Commodity Exposure



Drilling Success and Upside Potential



Strong Metallurgical Results



Resource Expansion Potential



Strategic Location



# Board of Directors



## Adam Cegielski

### CHAIRMAN

- 25+ years experience across various sectors with a focus on mineral exploration, raising over \$100M in financings
- Former President and Director of First Nordic Metals Ltd. (now Goldsky Resources Corp.); Founder and former CEO of predecessor company Gold Line Resources Ltd.; Founding Director of Cayden Resources Inc., acquired by Agnico Eagle Mines Ltd. for over \$205M

## Steve Cope

### PRESIDENT, CEO & DIRECTOR

- 15+ years' experience in the mining sector
- Corporate development for Orko Silver Corp., Barsele Minerals Inc., Orex Minerals Inc., and Timmins Gold Corp.

## Ruben Alvidrez

### DIRECTOR

- Director of Projects at Luca Mining Corp.
- 30+ years experience, 5 years in the mining sector following 26+ years with Citigroup where he served as Senior Vice President of Corporate Operations overseeing activities for Mexico and Latin America

## Art Freeze (P.Ge)

### DIRECTOR

- 46 years of experience in mineral exploration & project management
- Previously Primary Consulting Geologist for Goldcorp Inc., and has held consulting, management & supervisory positions with international mining companies such as Cominco Ltd., Pasminco Exploration Ltd., Echo Bay Mines Ltd. and Pan American Silver Corp.

## Toby Pierce

### DIRECTOR

- 25 years of geological and financial expertise within the resource sector
- Founder, CEO or director of numerous private and public mining and natural resource companies

## Jeffrey Couch

### DIRECTOR

- Capital markets executive with 10 years as Head of Investment Banking, Europe at BMO Capital Markets
- Former CEO of Lydian Mining and Alufer Mining Ltd., with board and senior leadership experience across TSX- and LSE-listed companies

# Management



## Steve Cope

PRESIDENT, CEO & DIRECTOR

- 15+ years' experience in the mining sector
- Corporate development for Orko Silver Corp., Barsele Minerals Inc., Orex Minerals Inc., and Timmins Gold Corp.

## Rakesh Malhotra

CFO

- Finance executive with nearly 30 years of diversified experience, including CFO roles for Canadian public companies and senior financial leadership across natural resources and multinational organizations
- Former Corporate Controller and Director of the Canadian subsidiary of Diebold Nixdorf, with a background spanning public company reporting, international operations, and cross-border financial management

# Advisors

## Gernot Wober

TECHNICAL ADVISOR

- Highly accomplished geologist with 35+ years of international experience in mineral exploration and project development across gold, silver, and polymetallic deposit types
- Former VP Exploration at Discovery Silver Corp. and Osisko Mining Inc., advancing the Cordero silver project through feasibility and leading exploration at Windfall, including the discovery of the high-grade Lynx Zone

## Andreas L'Abbé

FINANCIAL ADVISOR

- Mining finance executive with 17+ years of experience across Latin America, overseeing finance, treasury, ESG, and corporate functions for public mining companies
- Former CFO and Corporate Secretary of Discovery Silver Corp., playing a key role in the company's growth from explorer to mid-tier producer and in major strategic transactions, including the acquisition of Newmont Corp.'s Porcupine Complex



# Capital Structure

TSX.V: VIPR OTCQB: VIPRF

**\*TSX-V**

Current Price

# \$1.51 CAD

Shares Outstanding **92M CAD**

Warrants (average \$0.86) **40M CAD**

Options (average \$1.41) **7M CAD**

Fully Diluted Shares **139M CAD**

*\* to be updated pending closing of Coneto*

*\* as of February 26, 2026*

Research Coverage

Red Cloud Securities | Taylor Combaluzier | **BUY (\$2.50)** | *Published September 5, 2025*

## Notable & Major Shareholders



### Institutional

- Eric Sprott
- US Global Investors
- Ingalls and Snyder Brokerage Accounts
- Sprott Asset Management
- Donald Smith & Co Value Add Fund
- Contrarian Group
- Delbrook Capital Advisors



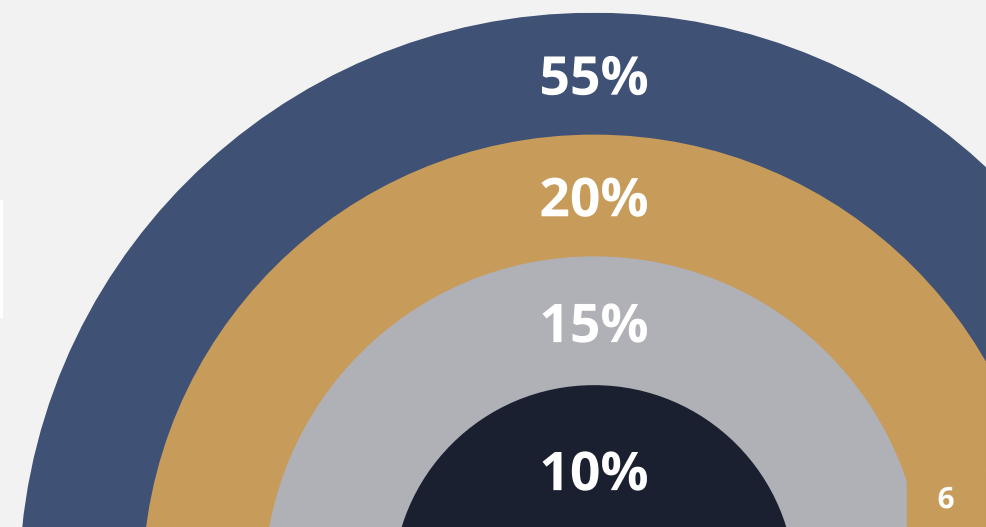
### Retail



### Management



### Friends & Family



# Under Explored In Multiple Major Mining Belts



## Location

**La Virginia:** In the Sierra Madre Occidental, 100 km from Dolores and 90 km from El Tigre  
**Coneto:** In the Mesa Central within the Mexican Silver Trend  
**Cimarron:** In the Porphyry Cu-Au Belt in Sinaloa, <25 km from key districts  
**All three projects are largely unexplored.**

## Resource & Potential

**La Virginia 2021 resource:**  
 Indicated: 154k Au @0.78g/t, 6.92M Ag @35g/t  
 Inferred: 260k Au @ 0.8g/t, 12.94M Ag @ 40g/t  
 Testing El Rubi Discovery & multiple anomalies

**Coneto 2021 resource:**  
 Inferred: 286k @ 1.67g/t Au, 19.1M @ 112g/t Ag, 538k Au-Eq @3.15g/t

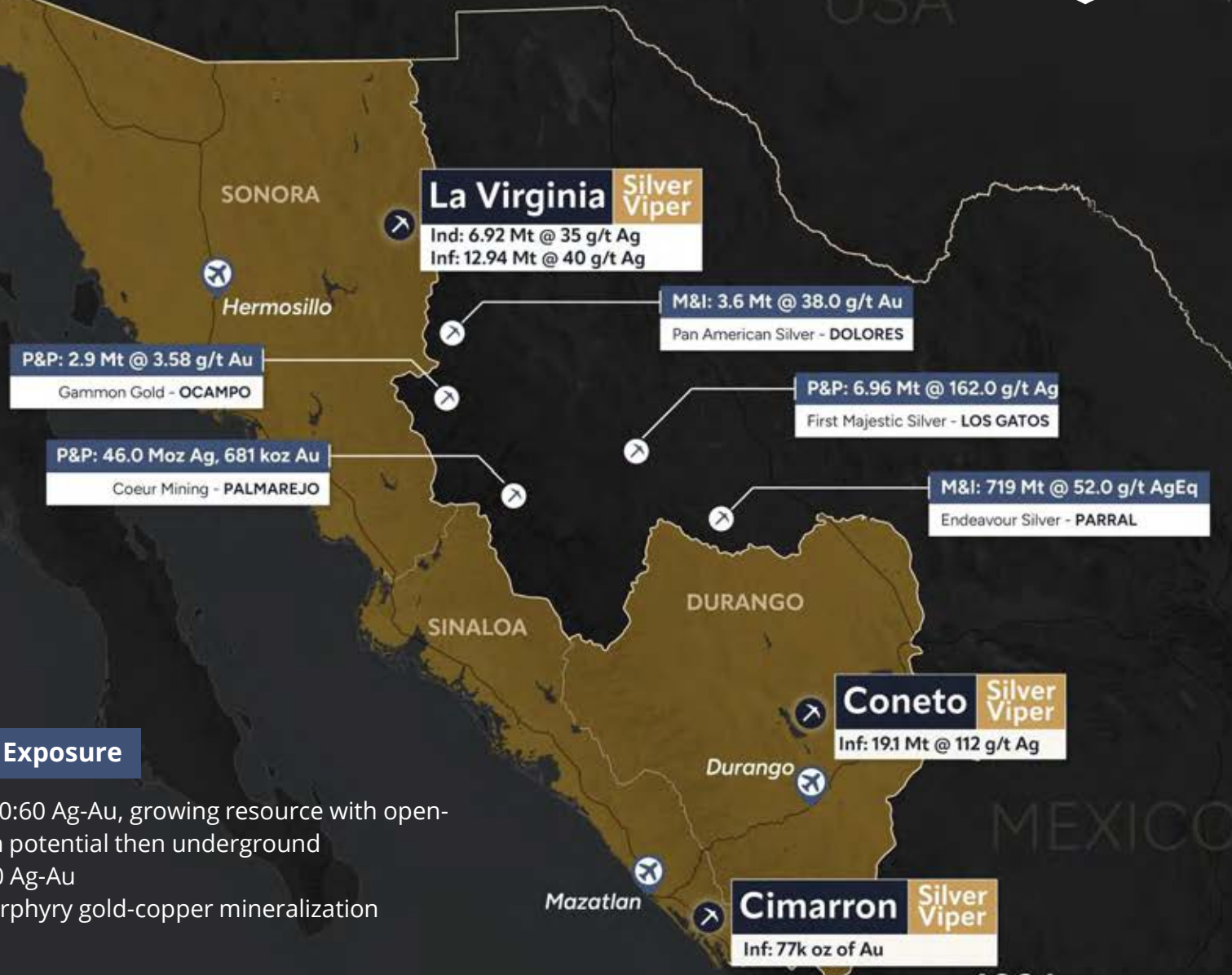
**Cimarron historical resource:**  
 77k oz of Au

## Size

**La Virginia:** 6,882 ha, 100% owned, fully permitted until 2027  
**Coneto:** 4,995 ha, 100% owned  
**Cimarron:** 2,873 ha, 100% owned

## Commodity Exposure

**La Virginia:** 40:60 Ag-Au, growing resource with open-pit heap-leach potential then underground  
**Coneto:** 50:50 Ag-Au  
**Cimarron:** Porphyry gold-copper mineralization



400 km



# La Virginia Project



## Resource & Project

Maiden NI 43-101 Resource (May 2021)  
Potential open pit, heap leach mine, followed by underground operations



## Drilling Results

El Rubi discovery hole LV18-201: 13.3 m @ 3.16 g/t Au & 228 g/t Ag  
3rd phase drilling: LV21-289: 1.5 m @ 252 g/t Au & 3,917 g/t Ag



## New Zones & Discoveries

Broad new zone representing a second lode at El Rubi



## Metallurgy & Ongoing Work

Recoveries: 90%-95% Au, 61.9%-75.9% Ag (initial tests)  
Ongoing drill program to expand maiden resource and test new targets





# El Rubi Discovery



## Location

2.5 km north of historic Pan American Silver & Minefinders area  
Structurally controlled by NNW trend



## Structural Interpretation

Fault-offset continuation of Las Huatas / La Virginia trend



## Exploration Activity

Multiple mineralized showings being advanced along strike





# Drilling Highlights

Hole	From (m)	To (m)	Interval (m)	Estimated True Width (m)	Ag (g/t)	Au (g/t)	Ag Equiv (g/t)	Au Equiv (g/t)
<b>LV19-210</b>	73	79	6	4.8	216	1.47	319	4.55
<b>INCL</b>	76	77	1	0.8	1071	6.32	1513	21.62
<b>LV19-211</b>	188	192.5	4.5	3	446	13.39	1384	19.77
<b>INCL</b>	189	190	1	0.67	1923	58.3	6004	85.77
<b>LV20-215</b>	188	195	7	6.3	86	14.4	1094	15.63
<b>INCL</b>	193.9	194.4	0.5	0.45	984	196.3	14725	210.36
<b>LV20-217</b>	265.5	273.5	8	4.56	401	4.45	713	10.18
<b>INCL</b>	270.5	272.5	2	1.14	1436	15.55	2524	36.06
<b>AND</b>	277.5	278.5	1	0.57	586	7.49	1110	15.86
<b>AND</b>	279.5	280.5	1	0.57	91	7.36	606	8.66
<b>AND</b>	301.5	303.5	2	1.14	201	8.44	791	11.3
<b>LV20-218</b>	184	187	3	1.89	530	5.82	937	13.39
<b>INCL</b>	185	186	1	0.63	1253	14.4	2261	32.3
<b>AND</b>	192	200	8	5.04	569	9.15	1210	17.28
<b>INCL</b>	194	197	3	1.89	1431	22.63	3015	43.08

Hole	From (m)	To (m)	Interval (m)	Estimated True Width (m)	Ag (g/t)	Au (g/t)	Ag Equiv (g/t)	Au Equiv (g/t)
<b>LV20-219</b>	182	186	4	2.84	249	1.55	357	5.1
<b>INCL</b>	185	185.5	0.5	0.36	1584	5.56	1973	28.2
<b>LV20-284</b>	79	126	47	28.95	44	0.77	98	1.4
<b>INCL</b>	81	82.35	1.35	0.83	329	5.39	706	10.1
<b>AND</b>	103	106	3	1.85	170	2.95	377	5.38
<b>AND</b>	138	139	1	0.62	324	8.54	922	13.2
<b>AND</b>	317.5	319	1.5	0.92	231	11.8	1057	15.1
<b>LV21-289</b>	280.5	410.5	130	80.08	18	0.69	67	0.95
<b>INCL</b>	292.38	293.5	1.12	0.69	172	9.9	865	12.4
<b>INCL</b>	321.4	323.5	2.1	1.29	123	6.55	582	8.32
<b>AND</b>	418.2	437.5	19.3	11.89	363	21.2	1849	26.4
<b>INCL</b>	428.7	430.2	1.5	0.92	3917	252	21541	308
<b>INCL</b>	429.2	429.7	0.5	0.31	10681	738	62369	891

# High-Grade Ag-Au Throughout El Rubi

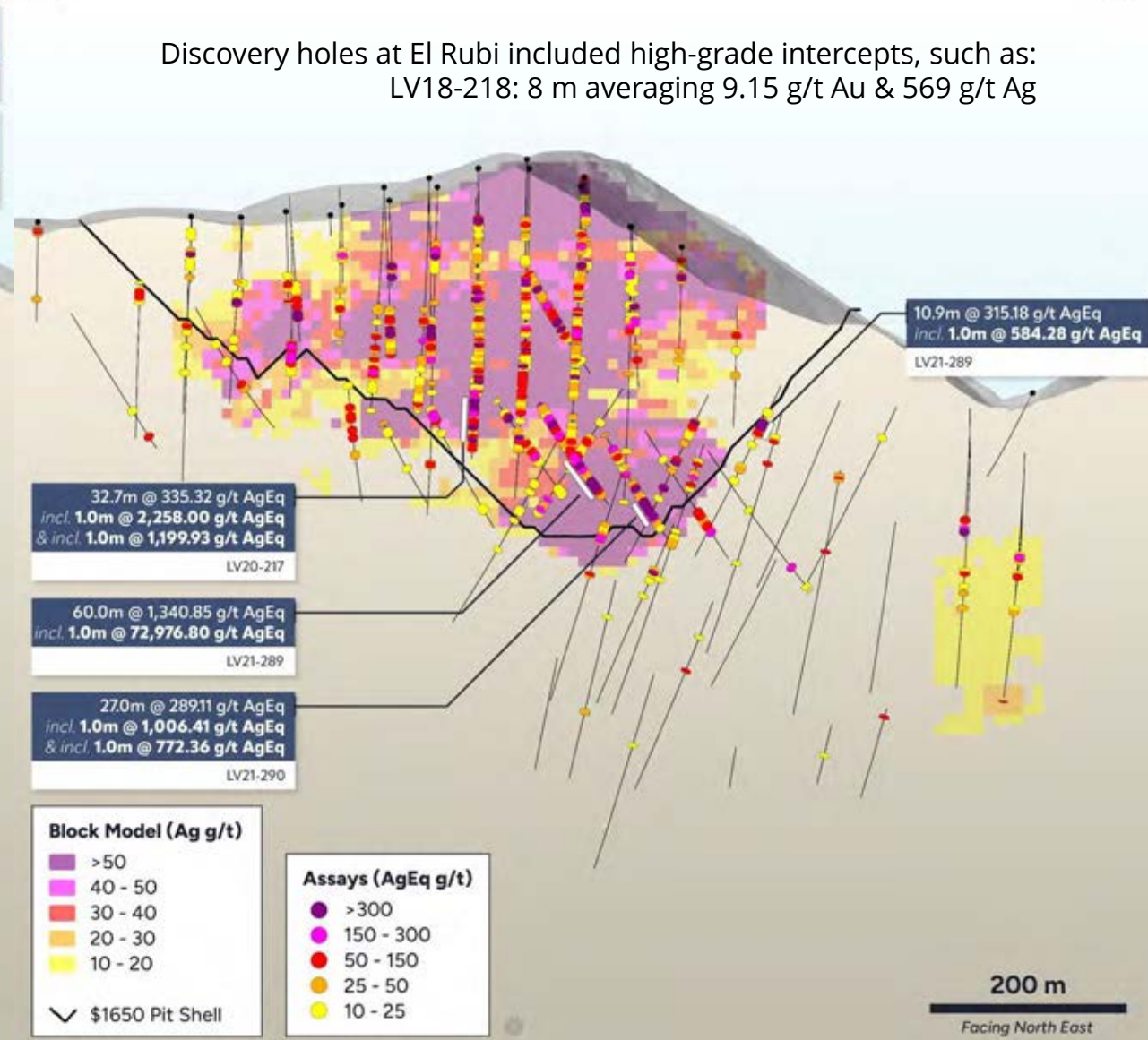
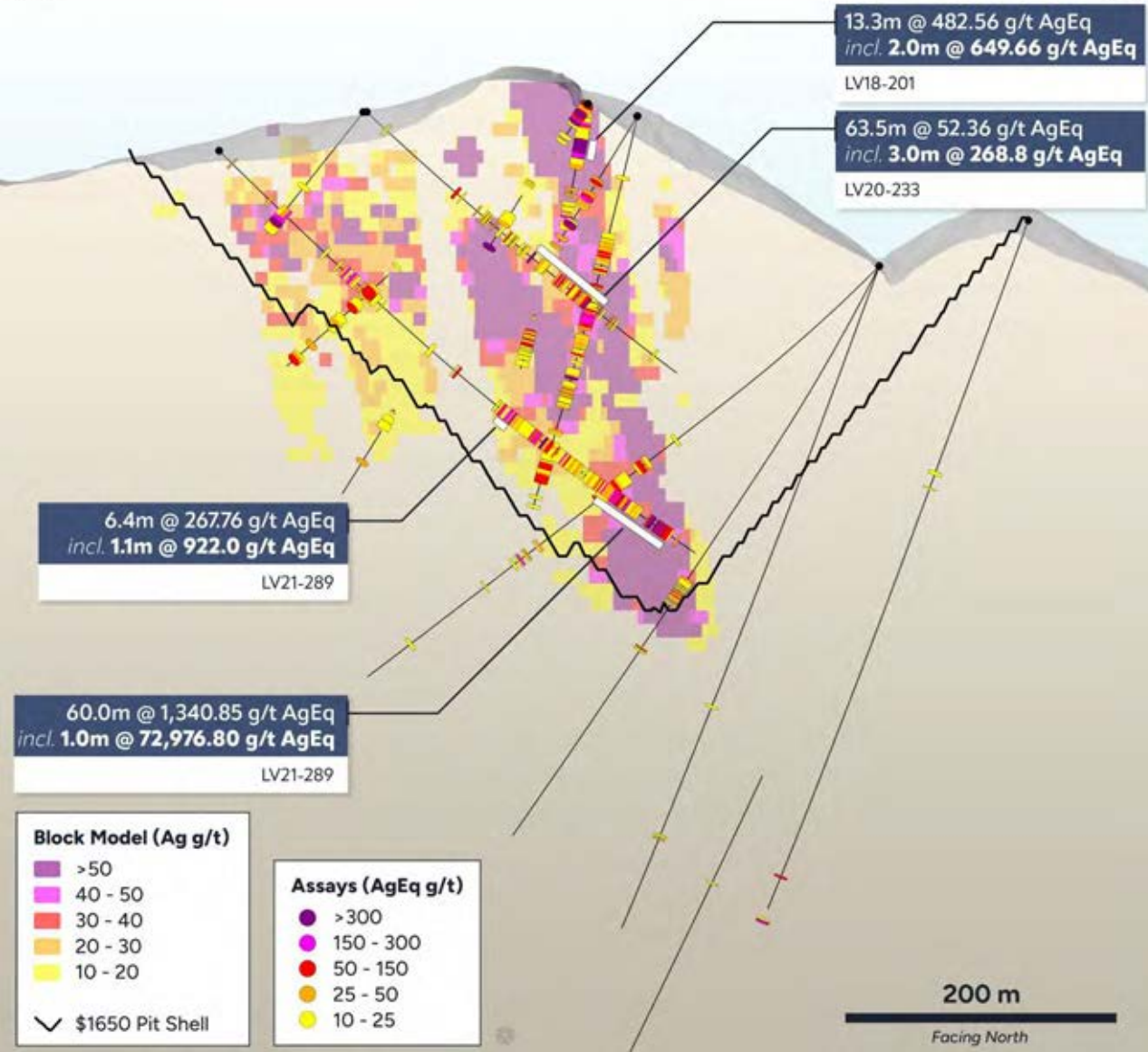


A

A' B

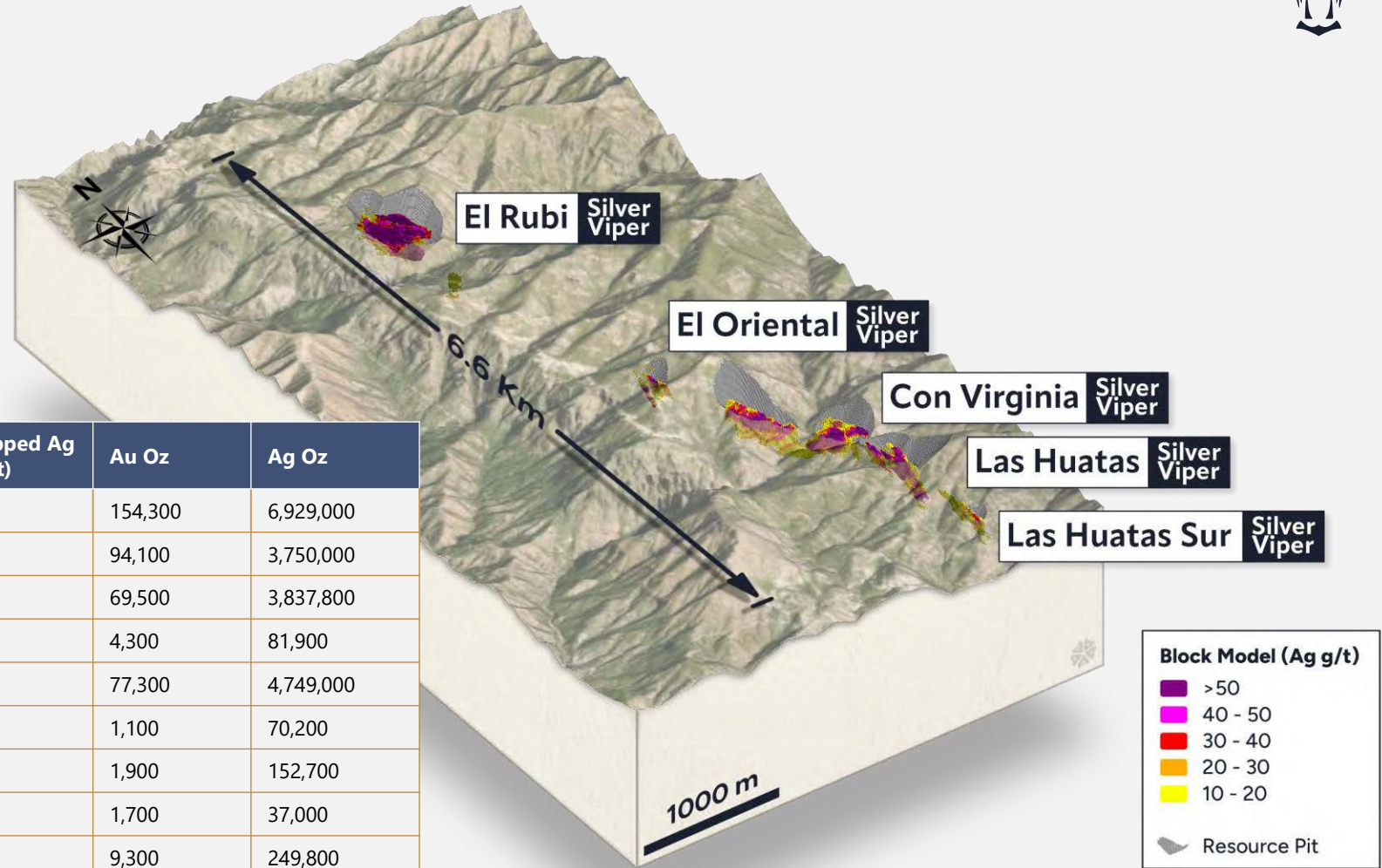
B'

Discovery holes at El Rubi included high-grade intercepts, such as:  
LV18-218: 8 m averaging 9.15 g/t Au & 569 g/t Ag





# La Virginia Mineral Resource Estimate



Deposit	Method	Class	Tonnes	Capped Au (g/t)	Capped Ag (g/t)	Au Oz	Ag Oz
El Rubi	Open Pit	Indicated	6,179,000	0.78	35	154,300	6,929,000
El Rubi	Open Pit	Inferred	3,255,000	0.9	36	94,100	3,750,000
Con Virginia	Open Pit	Inferred	3,279,000	0.66	36	69,500	3,837,800
El Oriental	Open Pit	Inferred	91,000	1.47	28	4,300	81,900
Las Huatas	Open Pit	Inferred	3,169,000	0.76	47	77,300	4,749,000
Las Huatas Sur	Open Pit	Inferred	83,000	0.4	26	1,100	70,200
Con Virginia	Underground	Inferred	39,000	1.52	121	1,900	152,700
El Oriental	Underground	Inferred	25,000	2.11	47	1,700	37,000
Las Huatas	Underground	Inferred	152,000	1.9	51	9,300	249,800
Las Huatas Sur	Underground	Inferred	11,000	3.19	34	1,100	12,000
<b>Total</b>		<b>Indicated</b>	<b>6,179,000</b>	<b>0.78</b>	<b>35</b>	<b>154,300</b>	<b>6,929,000</b>
<b>Total</b>		<b>Inferred</b>	<b>10,104,000</b>	<b>0.8</b>	<b>40</b>	<b>260,300</b>	<b>12,941,300</b>

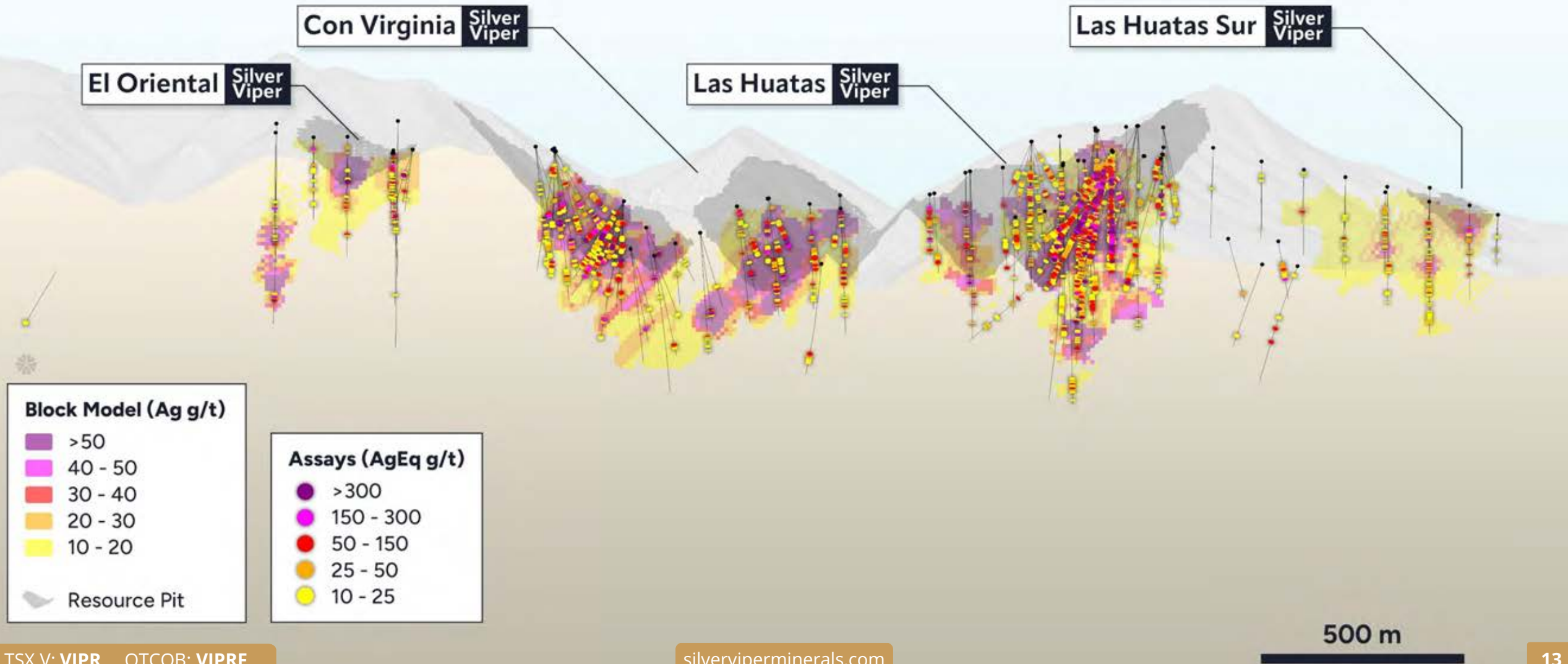
# La Virginia Resource Pit Shells & Underground



Open Pit optimization used for testing reasonable prospects for eventual economic extraction.

N

S





# Coneto Project

## 100% Ownership

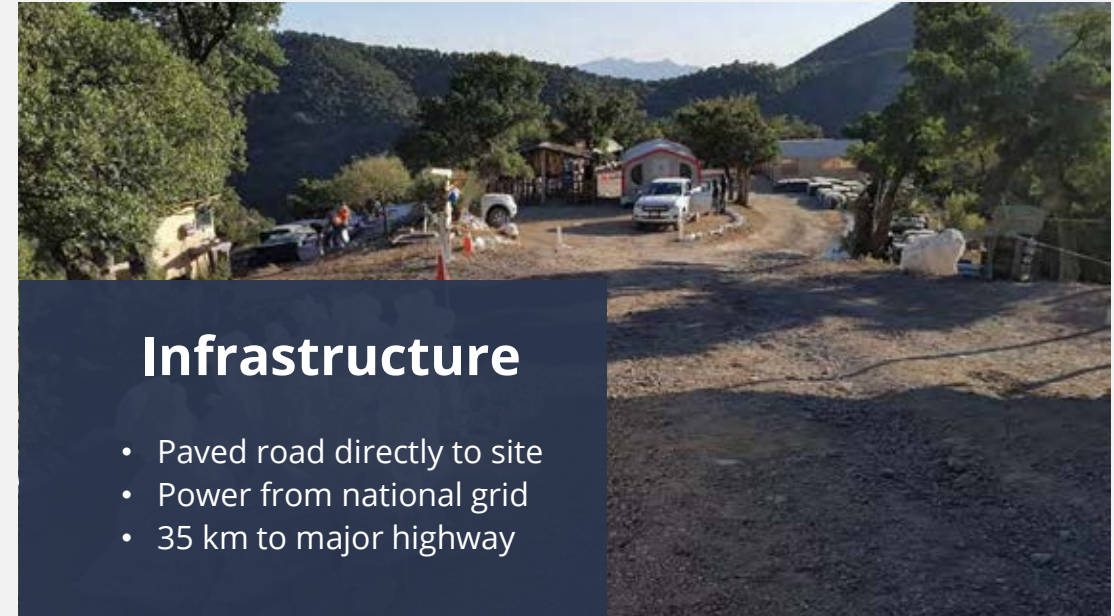
### Location:

Durango, Mexico, within the prolific Mexican Silver Trend

### Land package:

4,995 ha covering 40+ silver-gold epithermal quartz veins

- Skilled local labour (village of Coneto de Comonfort ~4,000 people)
- District setting: Surrounded by world-class silver districts — Fresnillo, Guanajuato, Zacatecas, La Colorada, La Pitarrilla, La Preciosa
- Located within the same geological corridor that has produced billions of ounces of silver



## Infrastructure

- Paved road directly to site
- Power from national grid
- 35 km to major highway

### Coneto de Comonfort



### Polymetallic Sulphide Mineralization



### Diamond Drilling



# Coneto Project



## Mining History

400+ years of mining; 40+ documented veins up to 20 m wide × 1 km long  
Historic drilling (Santo Niño): 4.34 g/t Au & 612 g/t Ag = 915.8 Ag eq over 3.30 m  
Most workings reached only to the water table — open at depth



## Geology

Low- to intermediate-sulphidation epithermal Ag-Au system  
Hosted in Tertiary volcanic andesites, like major Mexican deposits  
Preserved system with vertical extent potential of 300–600 m



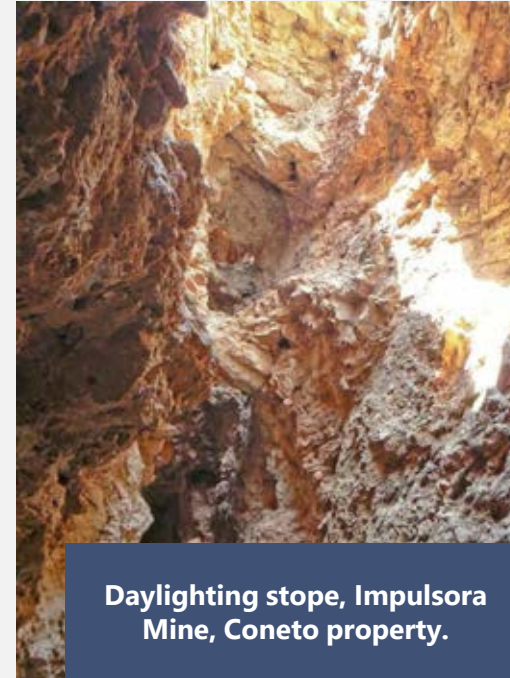
## Exploration Zones

Central- historic Palma & Sauce veins  
Southeast- Durazno & Impulsora (20 m thick; Au-Ag grades increase with depth)  
West- Loma Verde drilled in multiple phases with strong results  
North- New targets: La Bufa, Santo Niño, Rosario, El Rey



## Highlights

District-scale land in Mexico's premier silver belt  
Strong grades and significant depth potential  
Excellent infrastructure and community support  
100% ownership leverage and expansion upside



Daylighting stope, Impulsora Mine, Coneto property.



Coneto historic mine workings





2021

# Coneto Mineral Resource Estimate



\* Mineral resources are not mineral reserves and have not demonstrated economic viability. All figures are rounded to reflect the relative accuracy of the estimate. Composites have been capped where appropriate. Mineral Resources are reported at a cut-off mineral value of US\$74.30 per tonne. In-situ mineral values and gold equivalent grades are based on prices of US\$1,500 per troy ounce of gold and US\$21.50 per troy ounce of silver and metal recoveries specific to each vein ranging from 66% to 98% for gold and 69% to 90% for silver.

Mineral Resource Statement\*, Coneto Gold-Silver Project, Durango, Mexico SRK Consulting (Canada) Inc., August 30, 2021

Category	Quantity Tonnes (000s)	Grade			Contained Metal		
		Gold (g/t)	Silver (g/t)	Au-Eq (g/t)	Gold Oz (000s)	Silver Oz (000s)	Au-Eq Oz (000s)
Inferred Mineral Resources							
La Bufa	264	2.44	85	3.34	21	717	28
Santo Niño	901	1.10	163	3.17	32	4,718	92
Loma Verde	1,920	1.32	165	3.58	81	10,148	220
Descrubidora	280	0.91	141	2.69	8	1,266	24
Promontorio	690	2.31	50	3.13	51	1,108	69
Impulsora	1,270	2.28	28	2.57	93	1,154	105
<b>Total Inferred</b>	<b>5,325</b>	<b>1.67</b>	<b>112</b>	<b>3.15</b>	<b>286</b>	<b>19,111</b>	<b>538</b>



# Cimarron Project

**106**

Historical Drill Holes

**77,381** oz Au

Historical mineral resource

## Location

On the prolific porphyry belt from Arizona to Jalisco

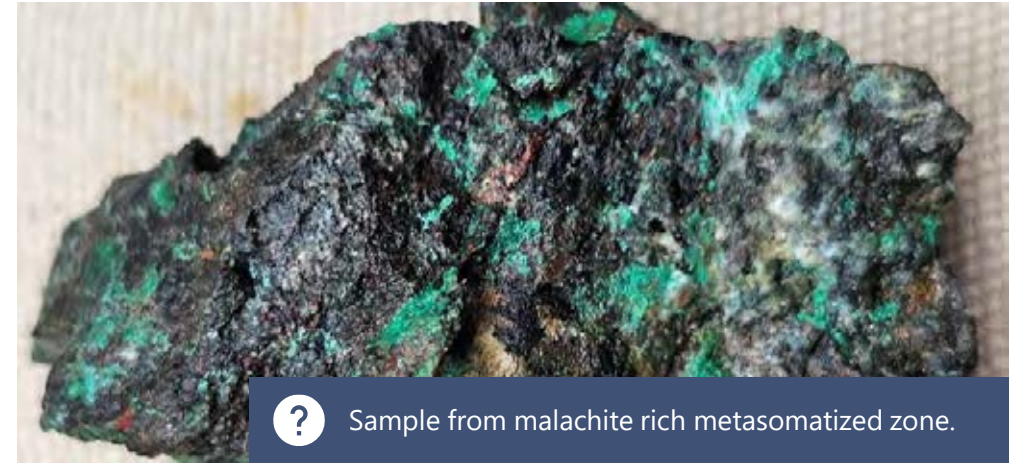


## Potential to expand resources across two mineralized zones

Alkaline porphyry gold system

High-sulfidation epithermal system

Situated in a well-established mining jurisdiction, less than 25 km from Vizsla Silvers' Panuco Project, past producing La Trinidad mine among others





■ Silver Viper Minerals

# Exploration Summary & Future Drill Plans

TSX.V: **VIPR**    OTCQB: **VIPRF**

# Exploration Summary & Plan



Updating the La Virginia Resource – **H1 2026**  
 Updating the Coneto Resource – **H2 2026**

## 2026 exploration focus areas:

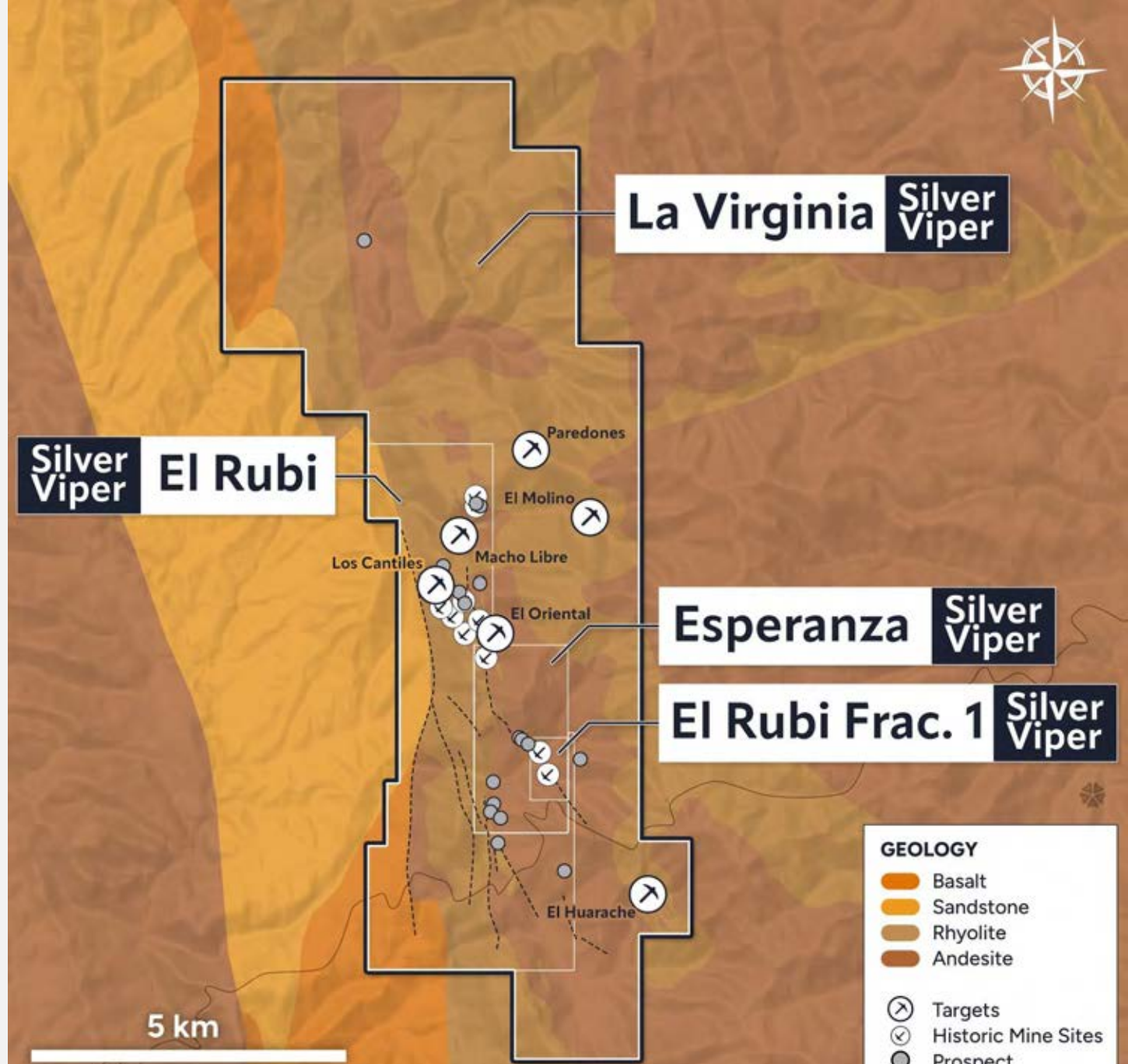
**La Virginia:** El Rubi, El Molino, Los Cantiles, Macho Libre and El Oriental

**Coneto:** 15-20,000 m drill program to expand resource and test new targets

**Cimarron:** Preliminary work mapping and sampling the property in preparation for eventual drill program

## La Virginia

- First phase 5000 m program: split between El Rubi and El Molino
- 25,000 m drill program focus: to be informed by first 5000 m, with the goal to make new discoveries at El Rubi, El Oriental, Macho Libre, or other targets of interest, expansion drilling on potential discovery at El Molino, depending on results of the preceding 5000 m program
- Eastern mineralized trend including Paredones and El Molino and several new structures outlined, containing breccias with quartz boiling textures, with initial results up to 8.3g/t Au and 90g/t Ag, more analytical results pending
- Dump samples up to 17.8g/t Au and 1,001 ppm Ag, and chip-channel samples up to 4.2g/t Au and 310 ppm Ag, located at the El Oriental Target
- Hydrothermal silicified breccia with up to 2.36g/t Au and 71g/t Ag outlined at the Macho Libre Target
- El Molino: continuous gold and silver anomalies, with supportive infill results from NW to SE along the trend



**GEOLOGY**

- Basalt
- Sandstone
- Rhyolite
- Andesite

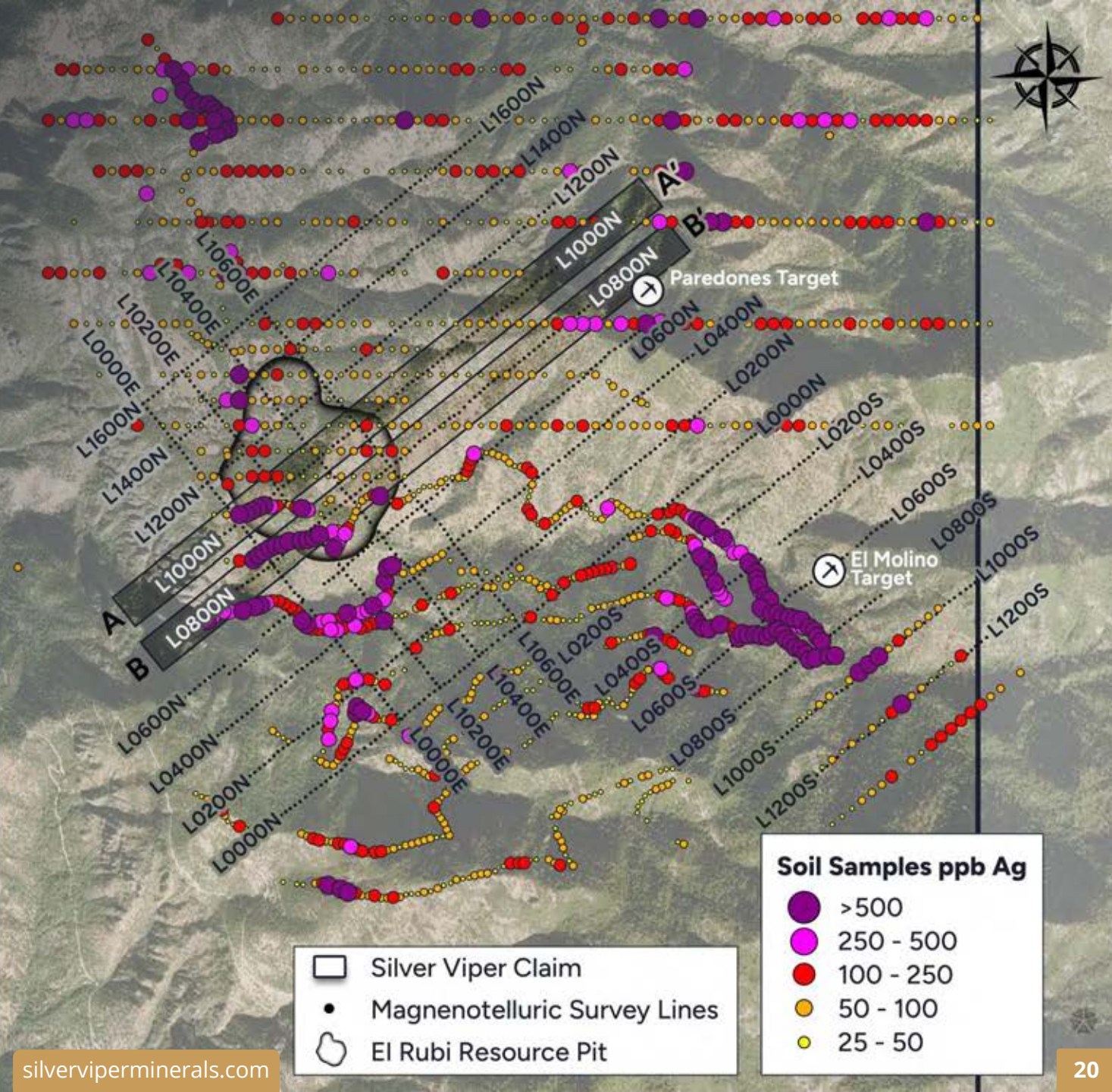
Targets  
 Historic Mine Sites  
 Prospect  
 Fault



# Magnetotellurics (MT) Geophysics

MT resistivity sections along lines L0800N & L1000N showing interesting high sub-vertical conductivity structures

1 km



# Magnetotellurics (MT) Geophysics



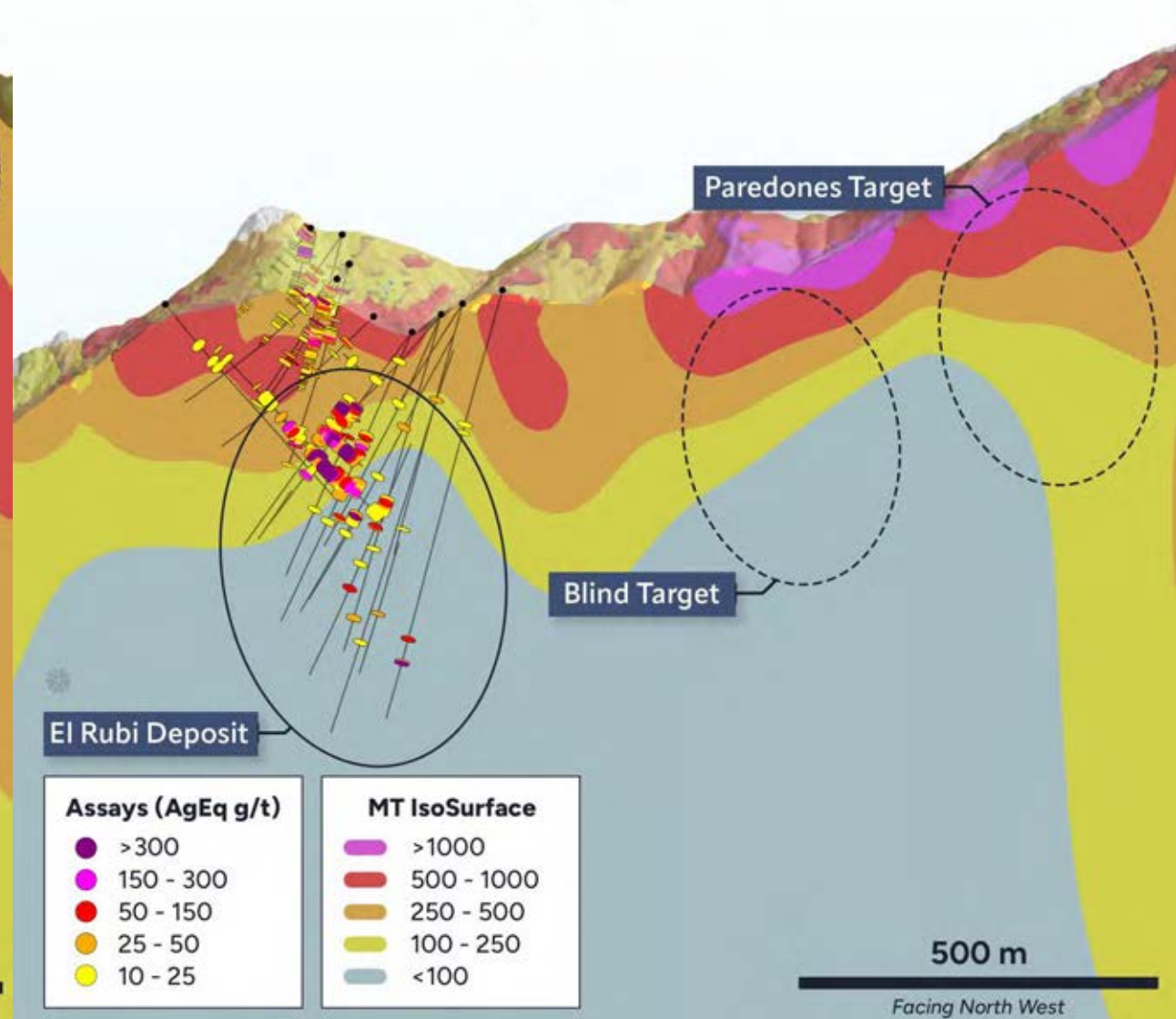
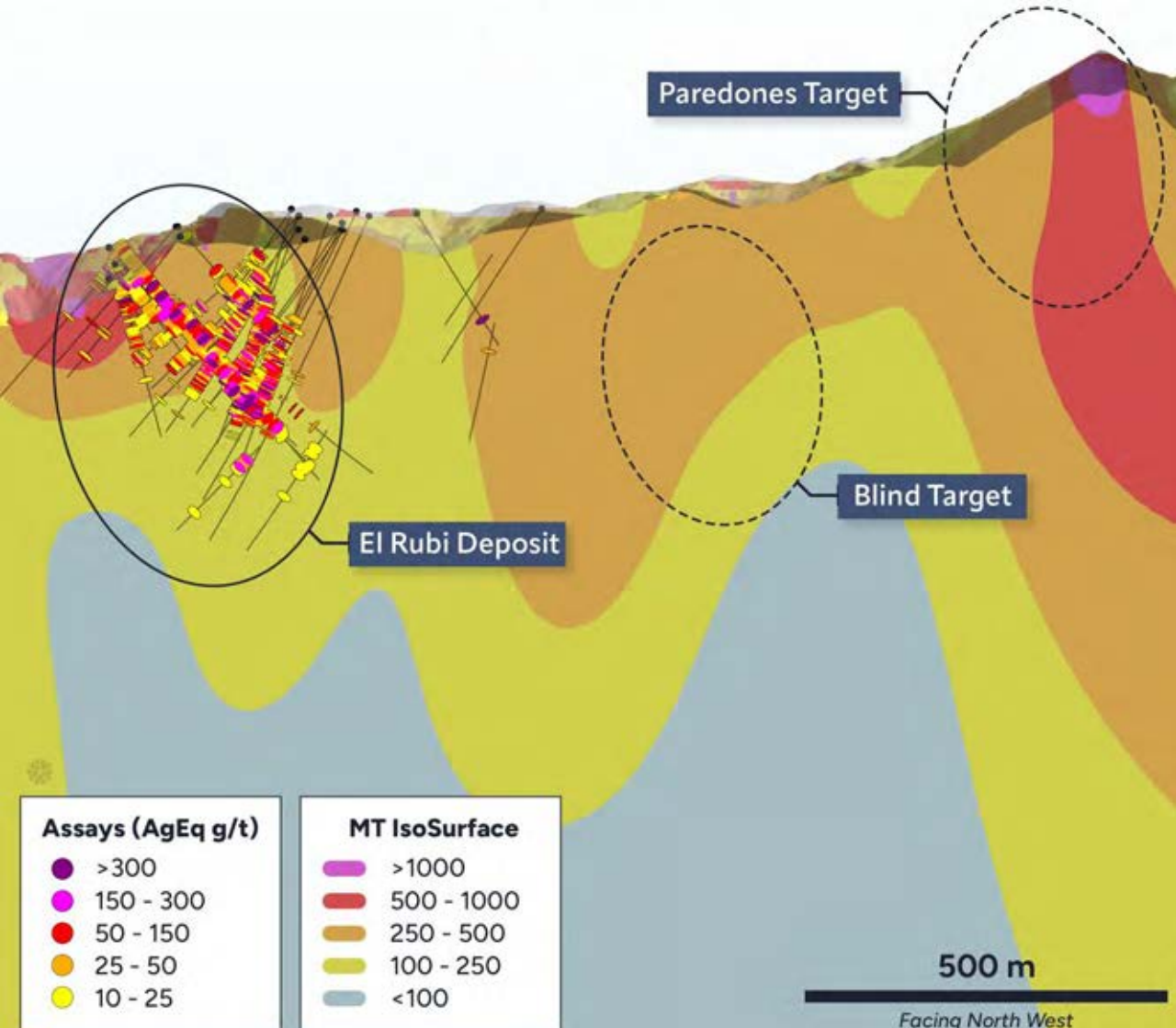
A

Line 1000N

A' B

Line 0800N

B'





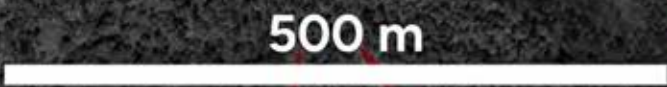
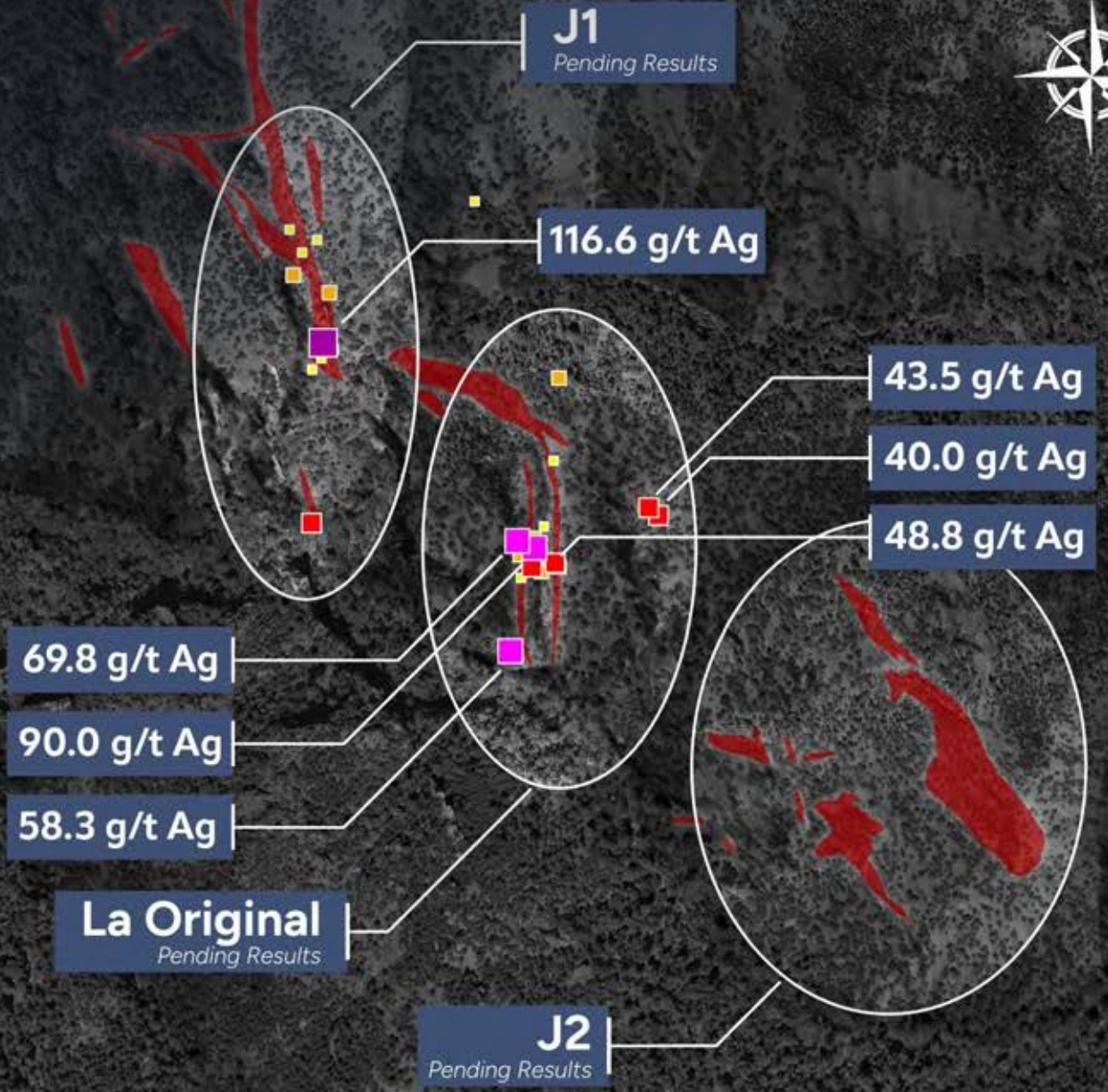
# La Virginia - New Targets

Geochemical assays are pending not only from J2 structure but also from J1 and La Original.

**Rock Chip Samples Ag g/t**

- >100
- 50 - 100
- 25 - 50
- 10 - 25
- 5 - 10

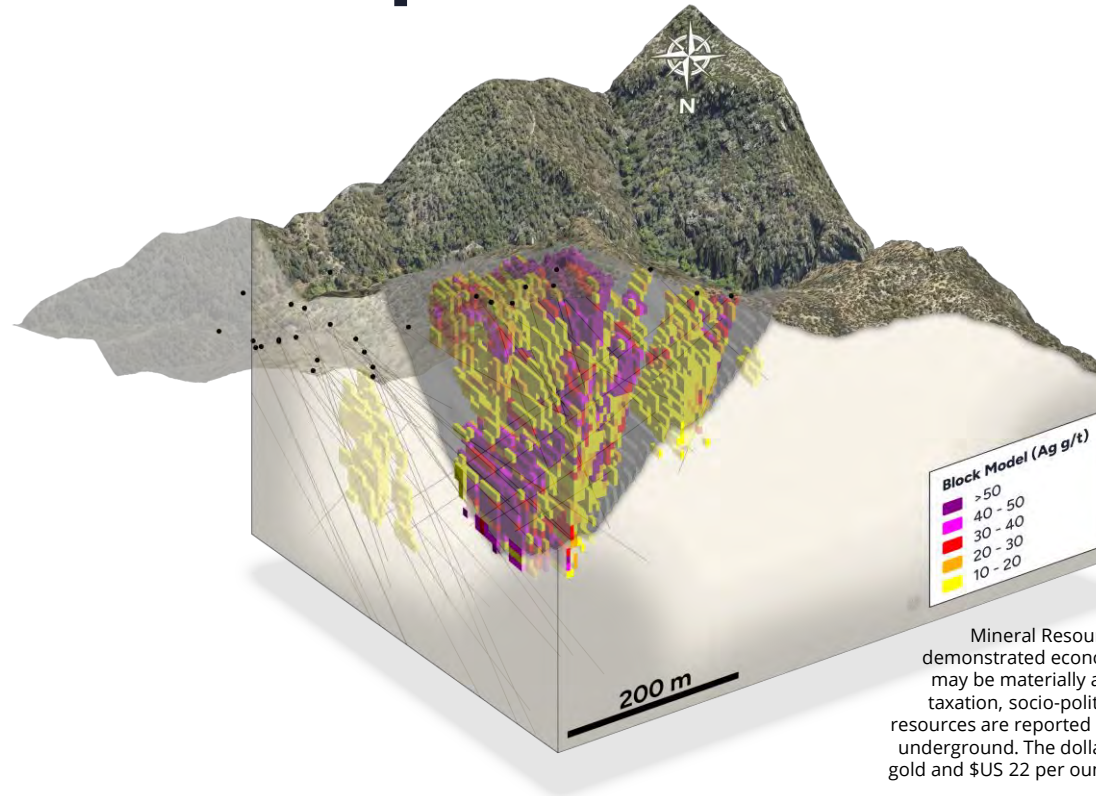
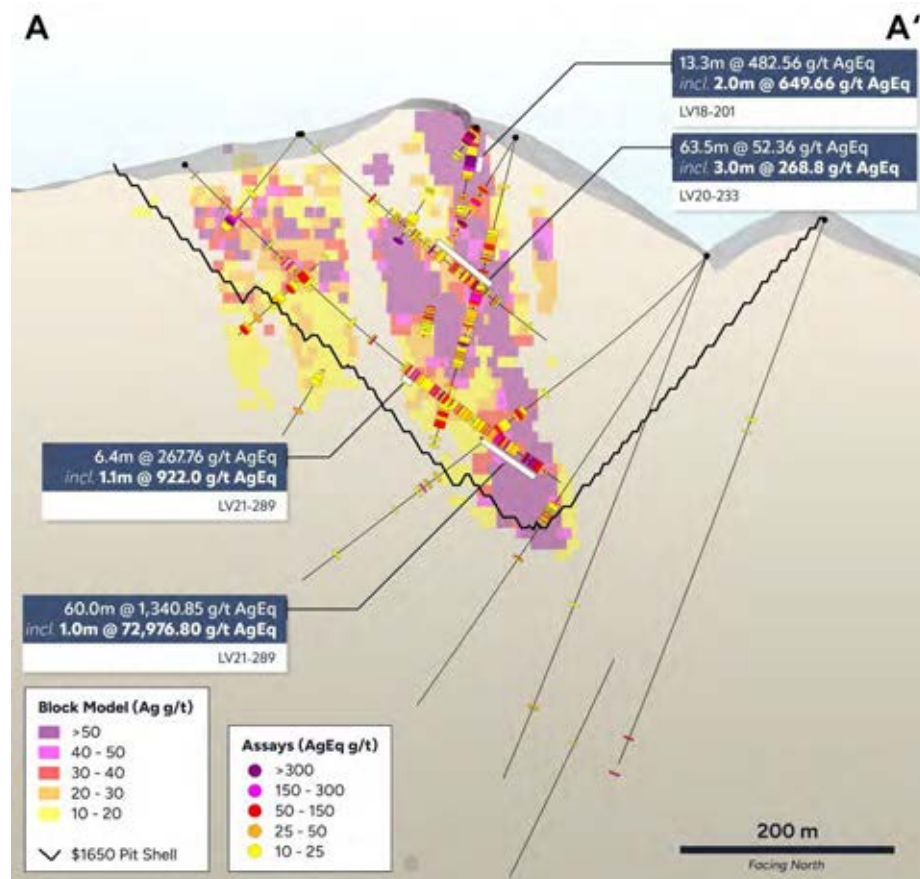
Hydrothermal Breccias



# La Virginia Mineral Resource Update Plan



- Expansion drilling ongoing
- Integrate all drilling data
- Update mineralization domains
- Review the high-grade outliers, look for ways to improve or reduce the metal lost



Mineral Resources which are not Mineral Reserves do not have demonstrated economic viability. The estimate of Mineral Resources may be materially affected by environmental, permitting, legal, title, taxation, socio-political, marketing, or other relevant issues. Mineral resources are reported at \$US20 equivalent for open pit and \$US100 for underground. The dollar equivalent is based on \$US 1,650 per ounce of gold and \$US 22 per ounce of silver assuming recoveries of 94% for gold and 90% for silver.

Area	Type	Class	Cut-off (\$US)	Tonnes	Au Grade (g/t)	Contained Gold (oz)	Ag Grade (g/t)	Contained Silver (oz)
El Rubi	Near Surface	Indicated	20	6,179,000	0.78	154,300	35	6,929,000
Viriginia	Near Surface	Inferred	20	6,622,000	0.71	154,200	41	8,739,800
	Underground	Inferred	100	227,000	1.92	14,000	62	451,500
<b>Total</b>		<b>Indicated</b>		<b>6,179,000</b>	<b>0.78</b>	<b>154,300</b>	<b>35</b>	<b>6,929,000</b>
<b>Total</b>		<b>Inferred</b>		<b>10,104,000</b>	<b>0.80</b>	<b>260,300</b>	<b>40</b>	<b>12,941,300</b>



# ESG, Health & Safety



## Environmental

Implemented systems for recycling, composting, and safe oil disposal

Installed water recirculation systems for drilling and camp restrooms

Donated 25 garbage bins to Nacori Chico for improved waste management



## Community

Donated holiday gifts, medications, PPE, and medical equipment to local communities

Provided a projector to a local school and uniforms to the baseball league

Donated diesel fuel to support municipal road repairs



## Health & Safety

Daily team safety briefings and vaccination protocols

Provided training in first aid, injury response, and forest fire prevention (with CONAFOR)


Conducted stress management sessions in compliance with NOM-035



# Contact Us

TSX.V: **VIPR** OTCQB: **VIPRF**

 Unit 1710 – 1050 W Pender St.  
Vancouver, B.C. Canada V6E 3S7

 (604) 687-8566  
(604) 687-6365

 [info@silverviperminerals.com](mailto:info@silverviperminerals.com)

**TSX**  
**Venture50**<sup>™</sup>

2026