



# SILVER VIPER MINERALS

La Virginia Project Update  
November 2021

# Forward Looking Statements

## **CAUTIONARY NOTE TO US INVESTORS**

The United States Securities and Exchange Commission ("SEC") permits US Mining companies, in their filings with the SEC, to disclose only those mineral deposits that a company can economically and legally extract or produce. We use certain terms in this presentation, such as "measured", "indicated", and "inferred" resources, which the SEC guidelines strictly prohibit US registered companies from including in their filings with the SEC. Any estimates of mineral resources shown in the Silver Viper Minerals Corp. presentation have been prepared in accordance with definition standards of the Canadian National Instrument 43-101 Standards of Disclosure for Mineral Projects ("NI 43-101"), which may differ from definition standards of the United States Securities and Exchange Commission ("SEC") Industry Guide 7.

## **QUALIFIED PERSON**

All technical content found in the Silver Viper Minerals Corp. presentation has been reviewed & approved by Dale Brittliffe, P.Geo., Vice President Exploration of Silver Viper Minerals Corp. and a Qualified Person under Canadian NI 43-101 Standards of Disclosure for Mineral Projects.

This presentation of Silver Viper Minerals Corp. (the "Company") contains "forward-looking information" within the meaning of the United States "Private Securities Litigation Reform Act of 1995" and applicable Canadian securities legislation. Statements containing forward-looking information express, as at the date of this presentation, the Company's plans, estimates, forecasts, projections, expectations, or beliefs as to future events or results and Silver Viper does not intend, and does not assume any obligation to, update such statements containing the forward-looking information. Generally, forward-looking information can be identified by the use of forward-looking terminology such as "plans," "projects," or "projected," "expects," or "does not expect," "is expected," "estimates," "forecasts," "scheduled," "intends," "anticipates," or "does not anticipate," or "believes," or variations of such words and phrases, or statements that certain actions, events or results "may," "can," "could," "would," "might," or "will be taken," "occur," or "be achieved." Statements containing forward-looking information include, but are not limited to, statements with respect to the anticipated economic returns of any of the Company's projects, the expected results from exploration activities, the economic viability of the development of newly discovered ore bodies, the accuracy of mineral resource estimates, future production levels, the requirements for additional capital, the results of drilling, and Silver Viper's commitment to, and plans for developing, newly discovered and existing mineralized structures.

Statements containing forward-looking information involve known and unknown risks, uncertainties and other factors that may cause the actual results, level of activity, performance or achievements of Silver Viper Minerals Corp. and its operations to be materially different from those expressed or implied by such statements. Such factors include, among others, the actual results of current exploration activities, future prices of silver and gold, unpredictable risks and hazards relating to the development of our projects, and the speculative nature of exploration and development. Although the Company has attempted to identify important factors that could cause actual results to differ materially from those contained in forward-looking statements, there may be other factors that cause results to be materially different from those anticipated, described, estimated, assessed or intended. There can be no assurance that any statements containing forward-looking information will prove to be accurate as actual results and future events could differ materially from those anticipated in such statements. Accordingly, undue reliance should not be placed on statements containing forward-looking information.

# Why Invest?

## 1) High Quality Asset

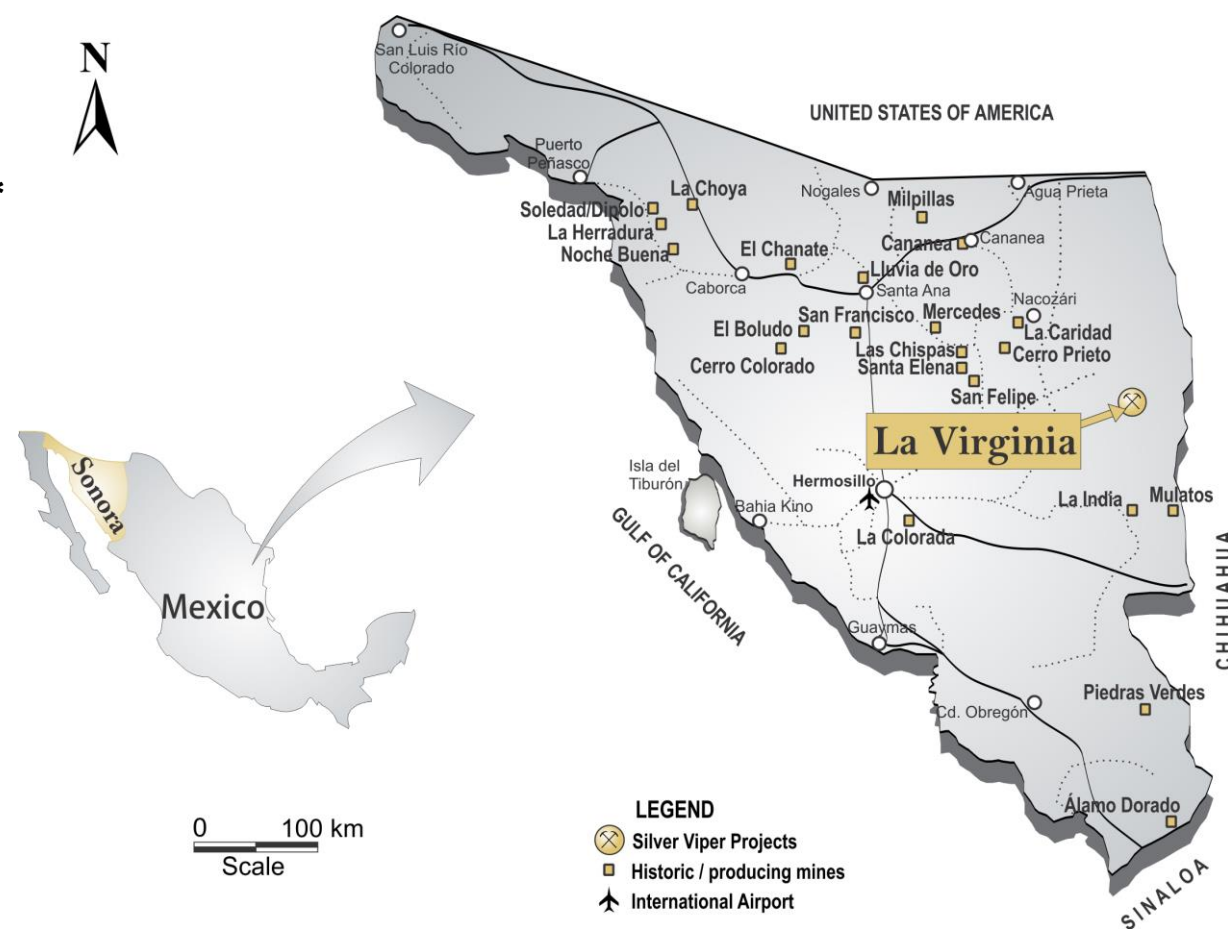
- Exciting Gold/Silver Project in Sonora Mexico – La Virginia
  - Maiden NI 43-101 resource delivered May 2021
  - Shows excellent potential for an open pit heap leach mine followed by underground operations
- El Rubi Discovery Zone – now a 43-101 Mineral Resource
  - El Rubi discovery hole LV18-201; **13.3m 3.16 g/t Au and 228 g/t Ag \***
  - 3<sup>rd</sup> phase drilling continues to yield high grade mineralization
  - New intercept LV21-289; **1.5m 252 g/t Au and 3,917 g/t Ag \***
  - New broad Zone of mineralization discovered representing a second lode at El Rubi in holes LV20-245, LV20-284 and LV21-289

## 2) Lots of Potential

- Working Towards Expanding Maiden Resource
  - Remainder of drilling in 2021 will expand upon the maiden resource
- Blue Sky Potential
  - Currently test additional anomalies in phase 3

## 3) Strong Management, Shareholder Support and Structure

- Strong technical team with over 150 years experience in the field
- Interests aligned with investors. Management owns 23%
- Major institutional ownership and support
- Low share count ~ 95 million shares



\* All intercepts quoted are downhole length



SILVER VIPER  
MINERALS

# La Virginia Gold-Silver Project

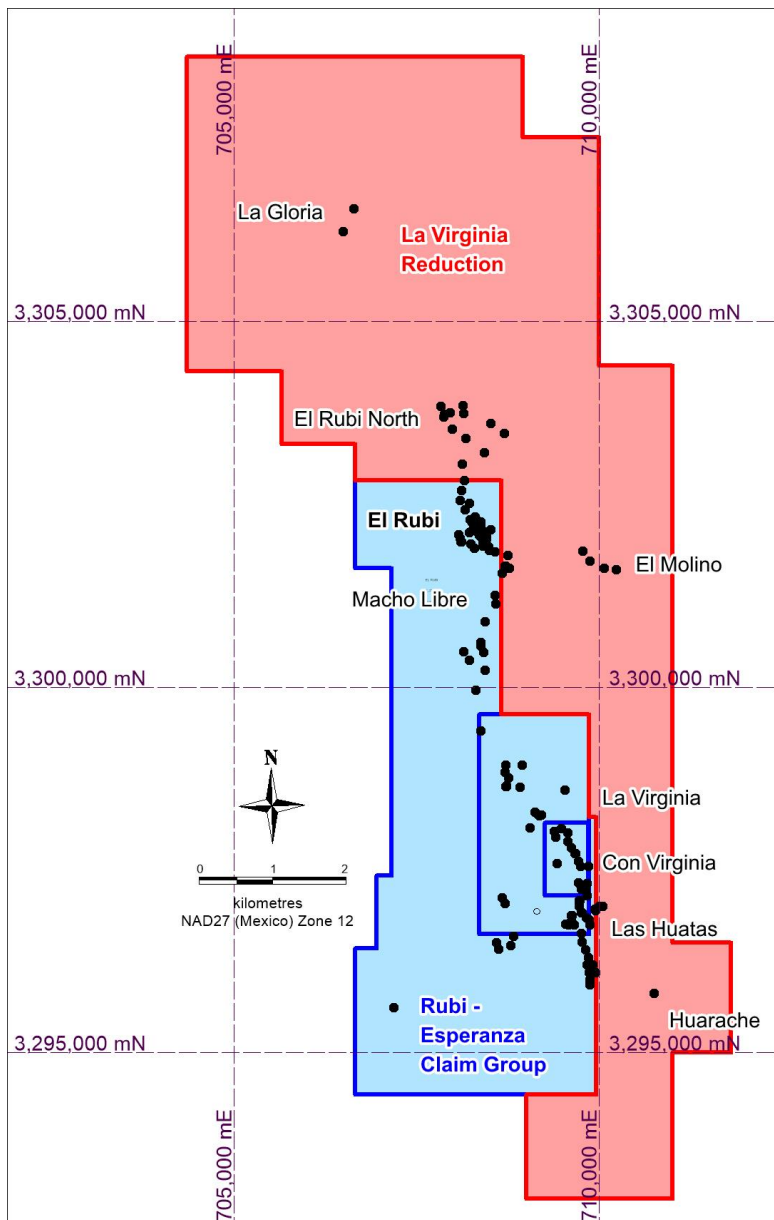


- Located 220km ENE of Hermosillo, Sonora, consolidated project totals 6,882 hectares in 4 claims and hosts both drilled and undrilled targets
- Situated in a largely unexplored portion of the Sierra Madre Occidental, within the northern Sierra Madre precious metal belt
- Project is 100km NNW of Dolores Au/Ag operation and 90km SSE of El Tigre Au/Ag operation
- Property accessed by Municipal roads from local centre, Nacori Chico, Sonora



SILVER VIPER  
MINERALS

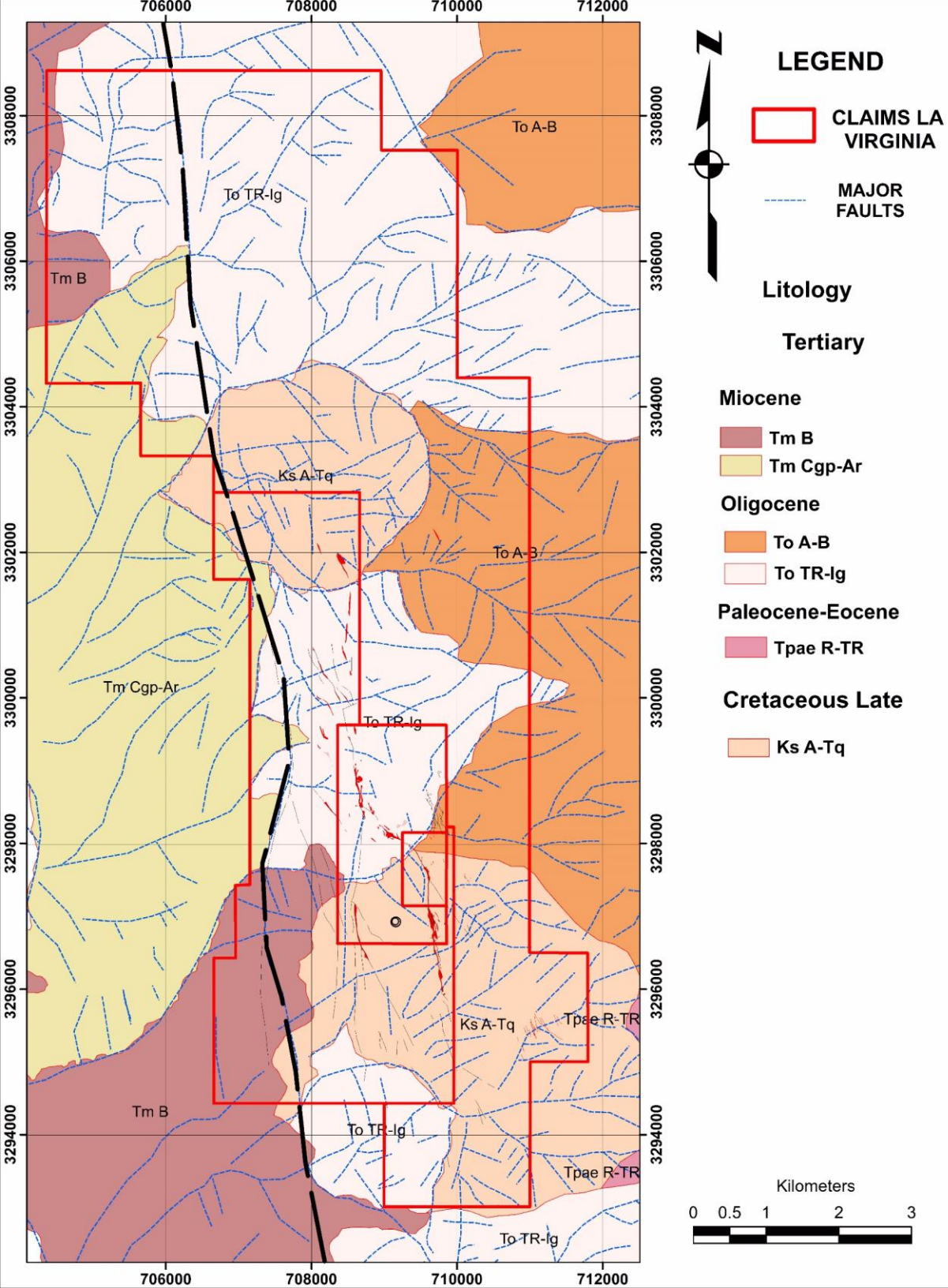
# La Virginia Project



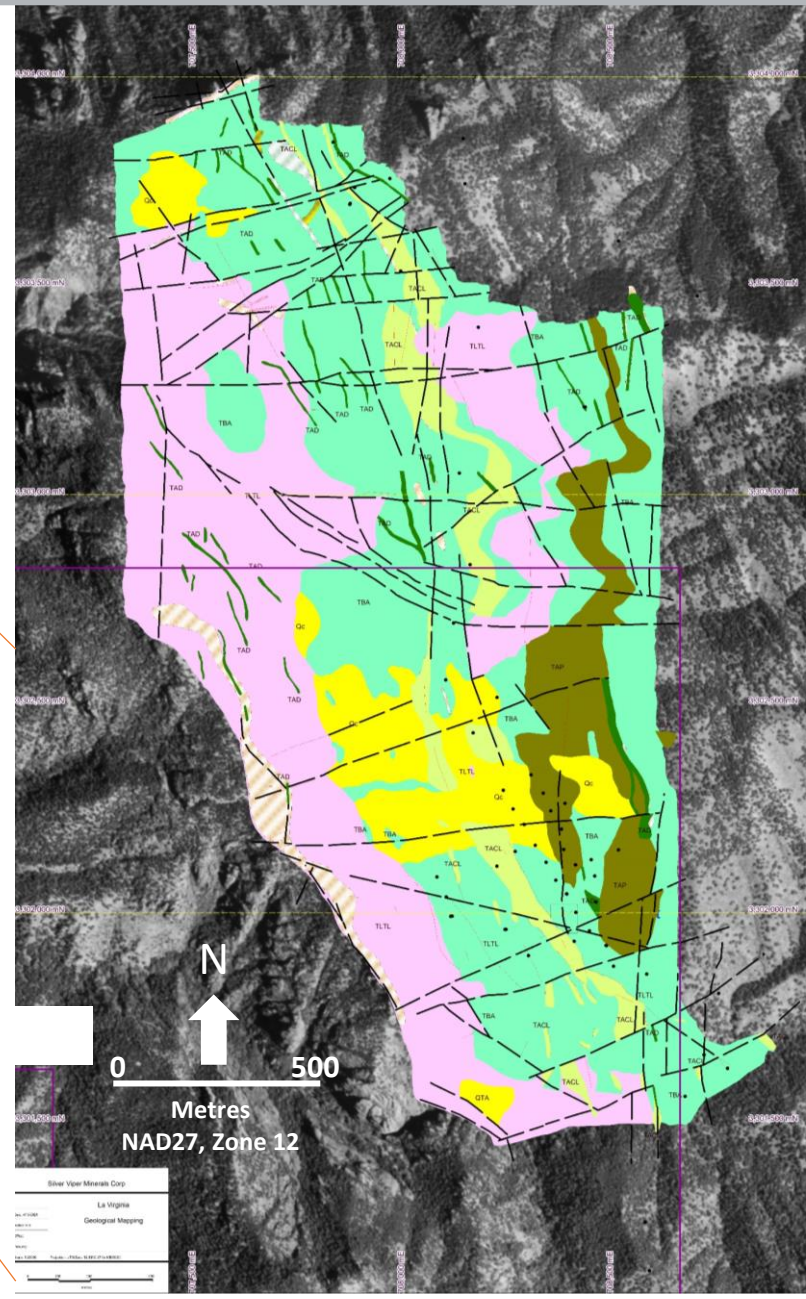
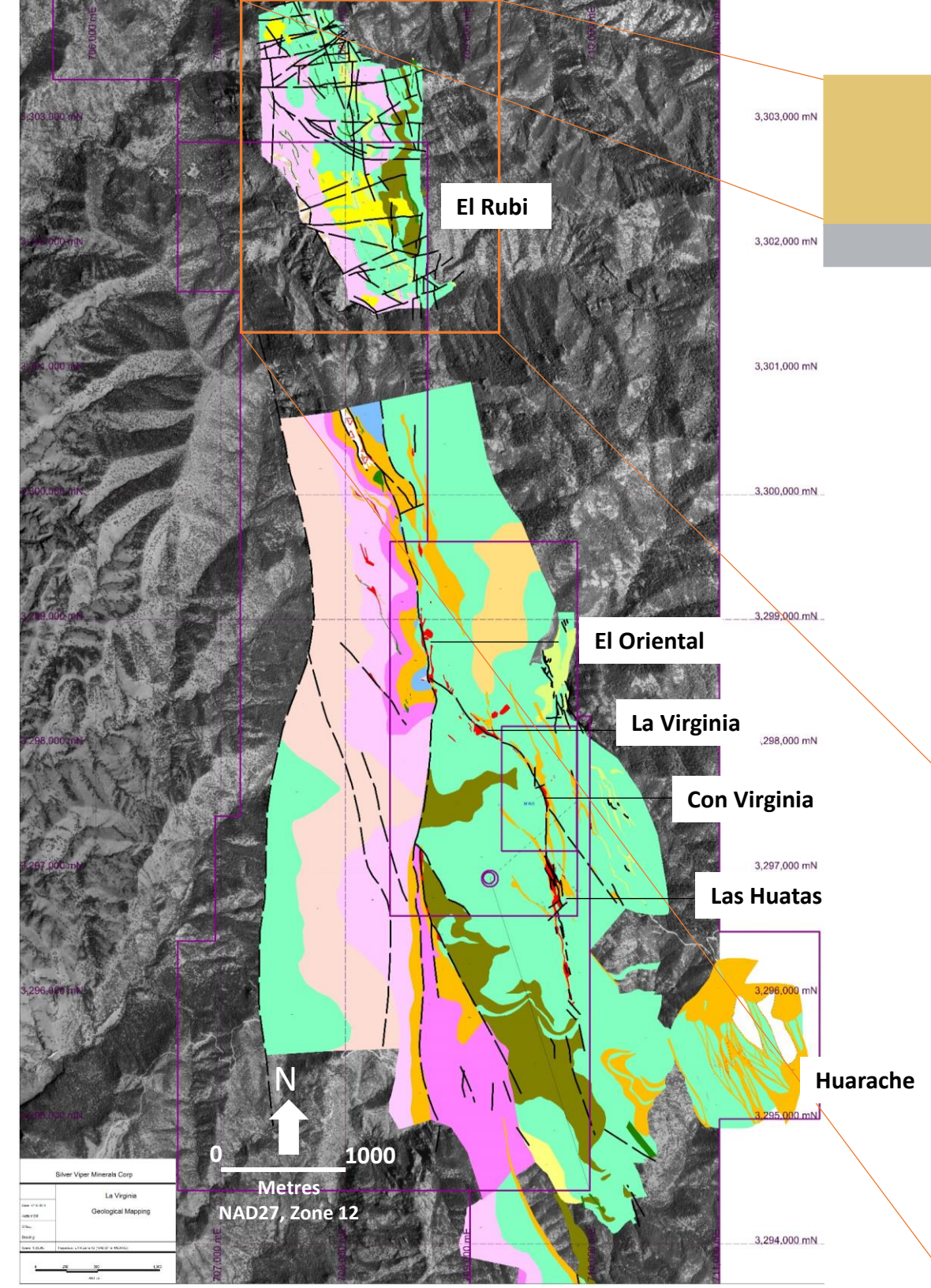
- Identified by Minefinders Corp. during 2007 reconnaissance campaign seeking Dolores-style vein and hydrothermal breccia hosted gold-silver mineralization.
- Intensive exploration drilling was completed over the Rubi-Esperanza claims by Minefinders during 2010-2012 until takeover by Pan American Silver Corp. (Pan Am).
- Historical dataset (2010-2013) contains 188 drill holes for 52,635m. Silver Viper has since added 100 drillholes for 27,000m (2018-2020).
- Rubi-Esperanza claims were complemented by large Pan American claim group of three claims subsequently acquired by Silver Viper. Strategic reduction of the three-claim package has been filed, now reduced to a single claim of 4,780 hectares. Project now totals an area of 6,882 hectares.
- Purchase Agreement with Rubi-Esperanza owners includes cash payments totaling US\$3.0M in escalating tranches over 5 years for 100% ownership; owners will retain a 2% NSR, purchasable for US\$2M within 5 years of effective date, or US\$3M after the 5<sup>th</sup> anniversary of said date.
  - June 2019 – US\$50,000 (Paid)
  - June 2020 – US\$75,000 (Paid)
  - June 2021 – US\$100,000 (Paid)
  - June 2022 – US\$200,000
  - June 2023 – US\$2,575,000
- Definitive Agreement with Pan Am gives Silver Viper 100% interest in the Pan Am claims and Rubi-Esperanza drill data in return for a 2% NSR project-wide.

# La Virginia Project – Geological Setting

- Underexplored corner of Sonora, Mexican Geological Survey is currently working on the 50:000 geological map sheet containing La Virginia, possibly to be published this year
- The 1:50,000 interpretation presented here was completed by Silver Viper using stereographic images acquired from SGM
- Topography is dominated by NNW trending regional scale fault zone, prospective targets occur on horst block east of the main fault
- NE trending structures and N-S and E-W structures form a complex setting favourable for hosting mineralization



# La Virginia Geological Mapping



## LITHOLOGY

- Qal Alluvium
- Qc Colluvium
- Andesitic Dike
- Dacitic Flow
- Dacitic Dike
- Vesicular Andesite Flow
- Andesite Flows with glomerular texture
- Volcanoclastics
- Andesitic agglomerate
- Porphyritic Andesite
- Upper Rhyolitic Lithic and Crystal Tuffs
- Dacitic - Andesitic Lapilli Tuffs
- Rhyolitic Crystal Tuff
- Lower Rhyolitic Lithic and Crystal Tuffs
- Shear Zone
- Quartz Veins
- Faults
- Alteration (SIL)
- Drill holes



SILVER VIPER  
MINERALS

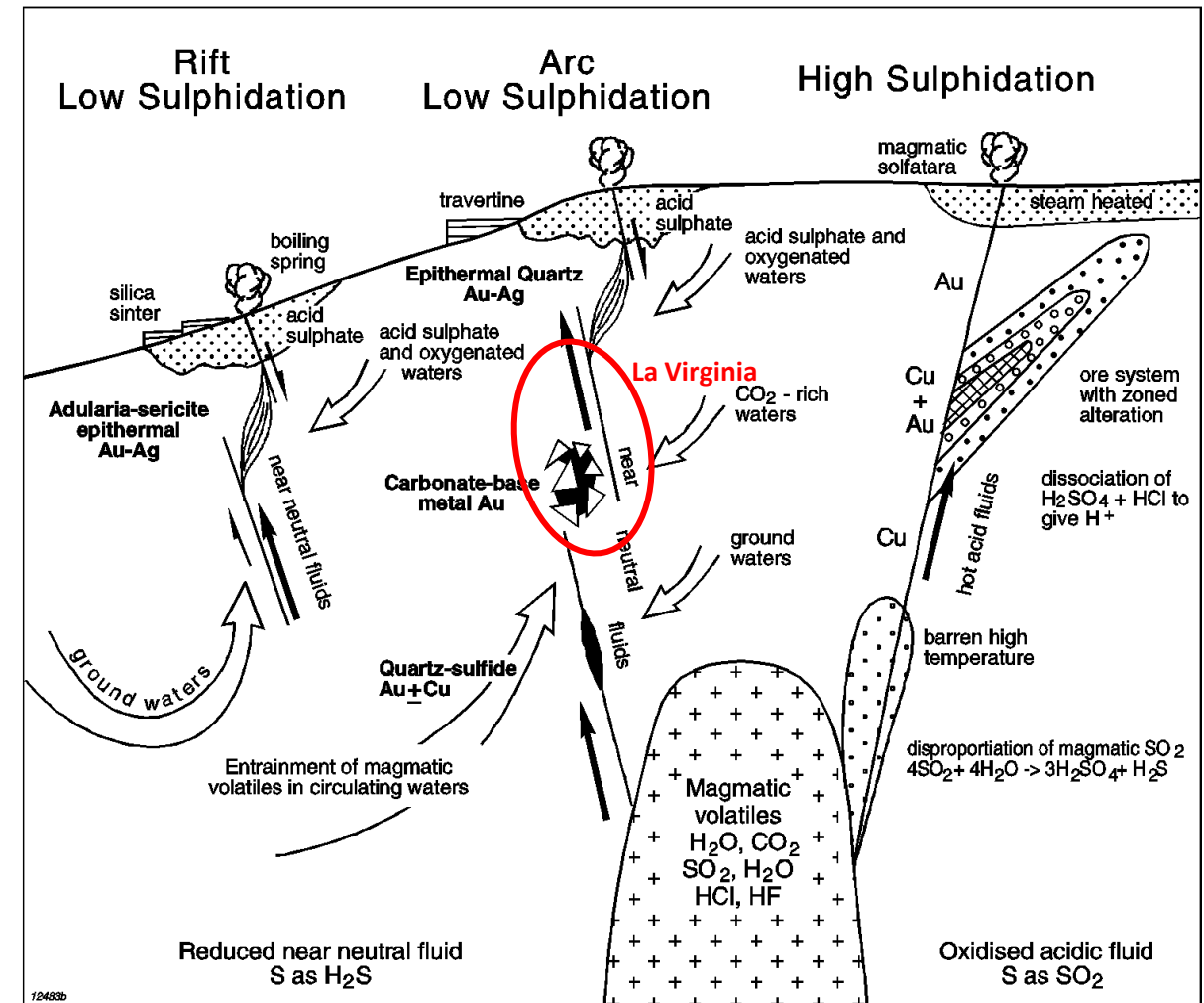
# El Rubi Plateau Looking North





# Exploration Model

- Low sulphidation epithermal style mineralization present as fracture fill veins, breccias and as broad weak quartz/calcite stockworks
- At El Rubi, gold and silver as electrum often found in association with silver sulphides, minor native silver and varying levels of sphalerite and galena. Bonanza grades returned from near surface and down to 300m below surface
- Veins are typically < 20 cm, usually lacking the banding typical of sericite-adularia style low sulphidation epithermal systems, though adularia and amethystine quartz are recognized in the system
- Gangue mineral assemblage quartz, calcite, pyrite, +/- sphalerite and galena, minor chalcopyrite, bear resemblance to the **carbonate-base metal Au** sub-group of intrusive related epithermal deposits of the SW Pacific Rim (examples include large deposits from Indonesia and Papua New Guinea, including Kelian (>4m oz Au) and portions of Porgera deposit (>6M oz Au))
- Analogs of the carbonate-base metal Au style are recognized in intrusive related epithermal systems both North and South America, sometime referred to as polymetallic Au-Ag
- Exploration philosophy includes tracing of primary structures, in conjunction with geochemical pathfinder responses in the search for dilational structural settings, as these represent potential low-pressure zones favourable for deposition of economic minerals at increased grades and widths





SILVER VIPER  
MINERALS

## Mineralized Breccia – LV21-309 302m



### *Secuencia paragenética:*

Brechamiento	XXXXXX
Pirita	- - - - -
Calcopirita	- - -
Esfalerita	- - -
Galena	- - -
Tetraedrita	-
Bornita	-
Covelita	-

Example of breccia hosted polymetallic mineralization resembling that from a carbonate-base metal Au style intrusive related epithermal system. Paragenesis of the metallic minerals present is shown above

LV21-309 302 – 302.5 metres

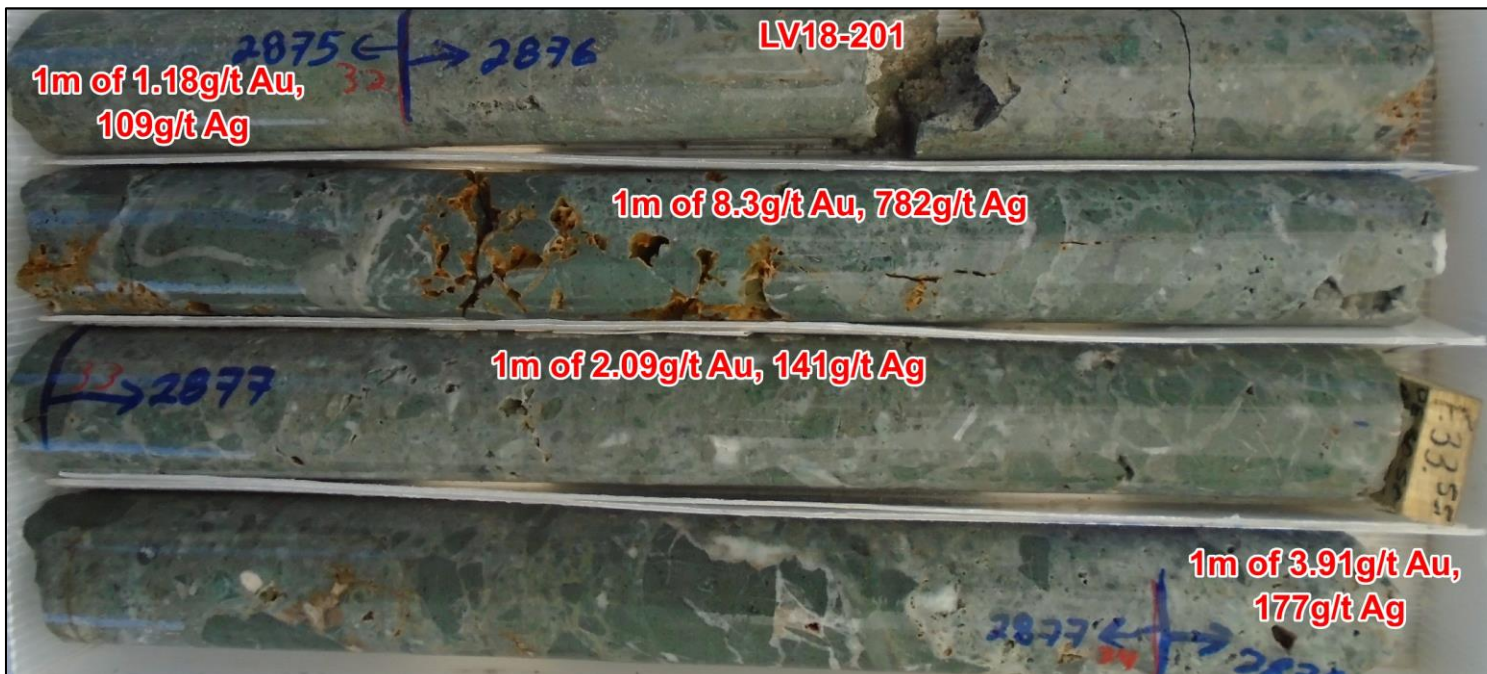
2.10 g/t gold  
692 g/t silver  
1.83% copper  
3.19% lead  
2.89% zinc



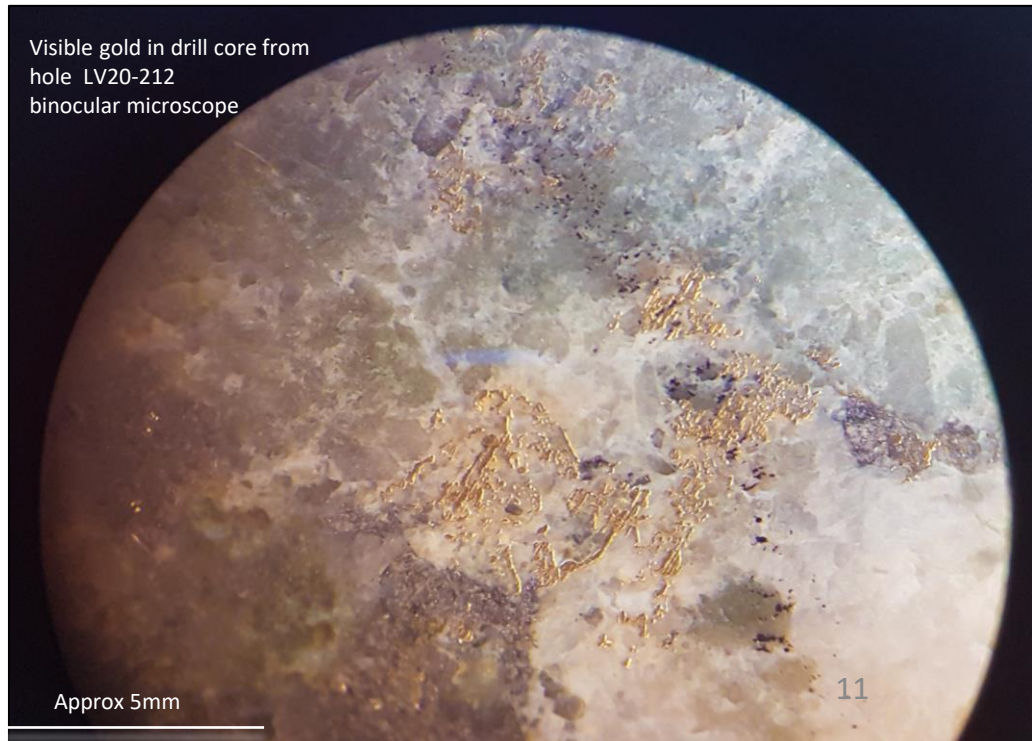
## El Rubi - Discovery



- Mineralization is structurally controlled by regional NNW trend. Interpreted as fault offset continuation of Las Huatas/La Virginia mineralized trend.
- Discovery located 2.5 kms north of the main area of historical exploration by Pan American Silver and Minefinders.
- Discovery holes at El Rubi included high-grade intercepts, including 8m downhole **averaging 9.15g/t Au and 569g/t Ag from hole LV18-218** (downhole length). With a new mineral resource estimate complete drilling is continuing to expand the mineralized zone.
- Mineralized showings continue to be evaluated and advanced along trend from El Rubi.



Visible gold in drill core from  
hole LV20-212  
binocular microscope



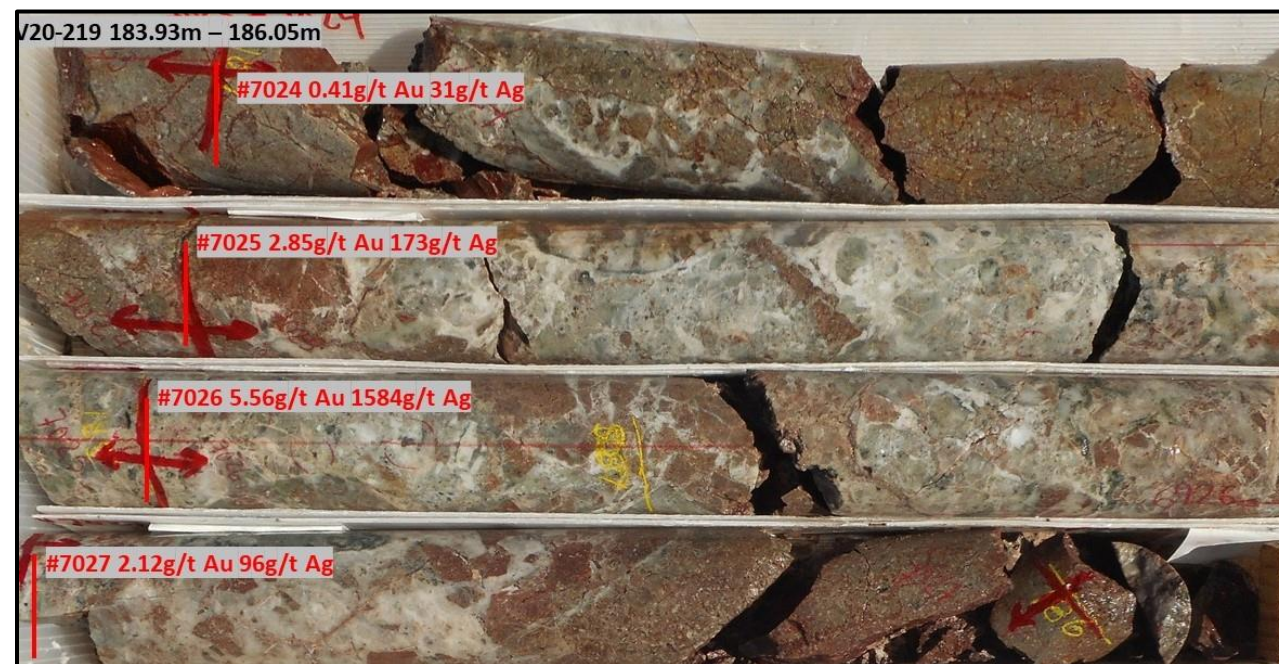
Approx 5mm



HOLE	From (m)	To (m)	Interval (m)	Estimated True Width (m)	Ag (g/t)	Au (g/t)	Ag Equiv (g/t)	Au Equiv (g/t)
EL RUBI								
LV18-201	27	40.3	13.3	6	228	3.16	449	6.42
and	32	33	1	0.45	782	8.3	1363	19.47
LV18-204	92	95	3	2.1	235	4.38	541.6	7.74
incl	94	95	1	0.7	434	8.19	1007	14.39
LV19-209	213	214.8	1.8	1	1054	3.22	1280	18.28
LV19-210	73	79	6	4.8	216	1.47	319	4.55
incl	76	77	1	0.8	1071	6.32	1513	21.62
LV19-211	188	192.5	4.5	3	446	13.39	1384	19.77
incl	189	190	1	0.67	1923	58.3	6004	85.77
LV20-215	188	195	7	6.3	86	14.4	1094	15.63
incl	193.9	194.4	0.5	0.45	984	196.3	14725	210.36
LV20-217	265.5	273.5	8	4.56	401	4.45	713	10.18
incl	270.5	272.5	2	1.14	1436	15.55	2524	36.06
AND	277.5	278.5	1	0.57	586	7.49	1110	15.86
AND	279.5	280.5	1	0.57	91	7.36	606	8.66
AND	301.5	303.5	2	1.14	201	8.44	791	11.3
LV20-218	184	187	3	1.89	530	5.82	937	13.39
incl	185	186	1	0.63	1253	14.4	2261	32.3
AND	192	200	8	5.04	569	9.15	1210	17.28
incl	194	197	3	1.89	1431	22.63	3015	43.08
LV20-219	182	186	4	2.84	249	1.55	357	5.1
incl	185	185.5	0.5	0.36	1584	5.56	1973	28.2
LV20-224	104	111	7	5.2	80	3.55	328	4.69
incl	108	109	1	0.74	453	8.31	1035	14.8
LV20-227	173.4	176.9	2.5	2.13	135	2.36	300	4.29
incl	175.4	175.9	0.5	0.43	575	8.8	1191	17
LV20-229	293	294.5	1.5	0.98	31	16.8	1209	17.3
incl	293	293.5	0.5	0.33	40	43.7	3099	44.3
LV20-245	174	176	2	1	658	16.3	1797	25.67
LV20-277	131.5	133	1.5	0.96	493	9.46	1155	16.50
LV20-283	233.5	236	2.5	1.6	67	33.8	2433	34.76
LV20-284	79	126	47	28.95	44	0.77	98	1.40
incl	81	82.35	1.35	0.83	329	5.39	706	10.1
AND	103	106	3	1.85	170	2.95	377	5.38
AND	138	139	1	0.62	324	8.54	922	13.2
AND	317.5	319	1.5	0.92	231	11.8	1057	15.1
LV21-289	280.5	410.5	130	80.08	18	0.69	67	0.95
incl	292.38	293.5	1.12	0.69	172	9.9	865	12.4
incl	321.4	323.5	2.1	1.29	123	6.55	582	8.32
AND	418.2	437.5	19.3	11.89	363	21.2	1849	26.4
incl	428.7	430.2	1.5	0.92	3917	252	21541	308
(incl)	429.2	429.7	0.5	0.31	10681	738	62369	891

- High grade assays in most recent drilling include:

- LV21-289; 738 g/t Au and 10,681 g/t Ag over 0.5m (downhole)
- LV20-284; 11.8 g/t Au and 231 g/t Ag over 1.5m (downhole)
- LV20-283; 33.8 g/t Au and 67 g/t Ag over 2.5m (downhole)
- LV20-218; 22.6 g/t Au and 1,431 g/t Ag over 3.0m (downhole)
- LV20-217; 15.55 g/t Au and 1,436 g/t Ag over 2.0m (downhole)
- LV20-215; 196.3 g/t Au and 984 g/t Ag over 0.5m (downhole)
- LV19-211; 58.3 g/t Au and 1923 g/t Ag over 1m (downhole)



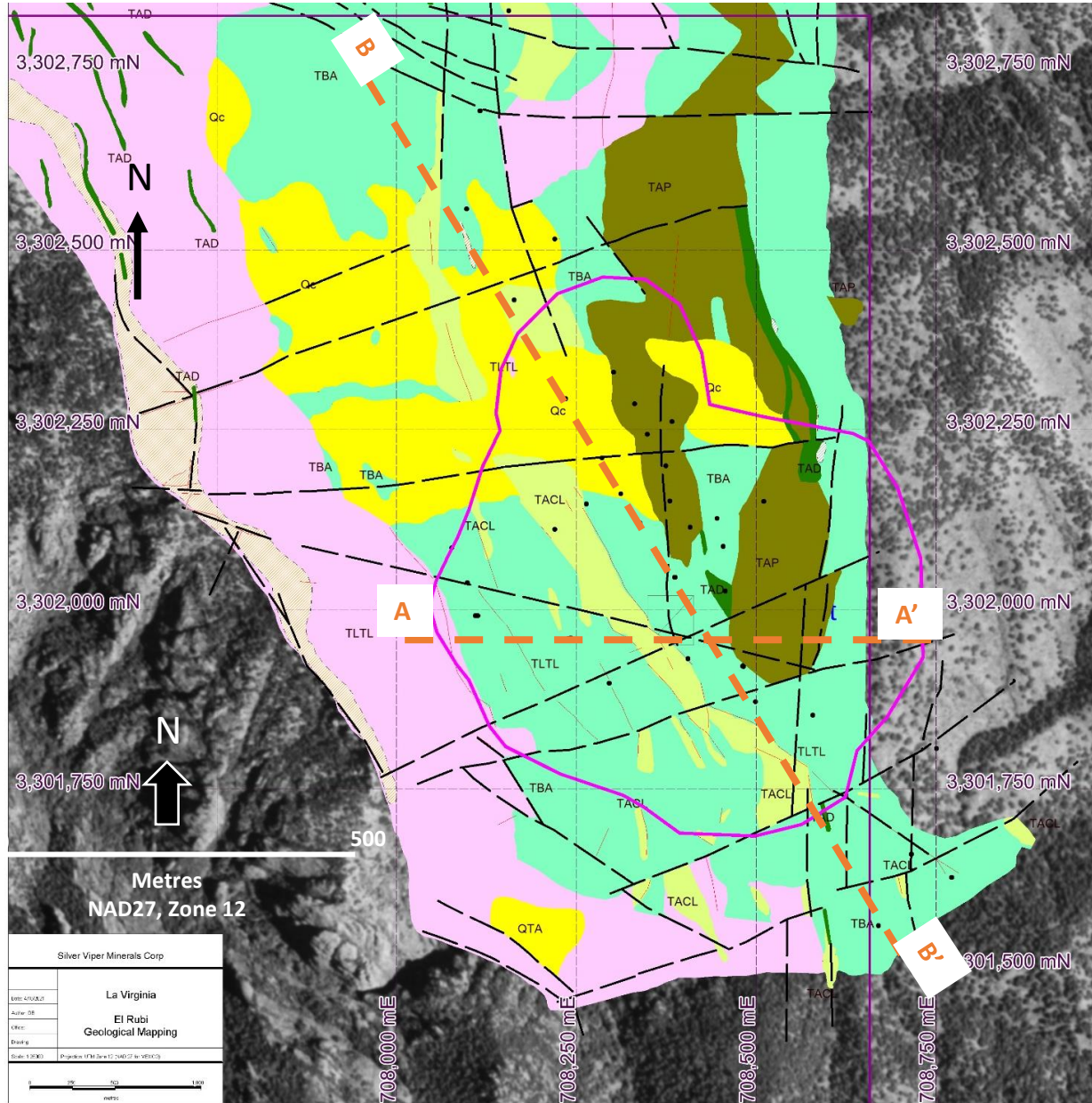
Results taken from Silver Viper News Releases dated January 17 2019, January 13, 2020, February 12, 2020, February 25 2020 and March 1 2021.

True Widths estimated, Ag Eq calculated using Ag:Au ratio of 70:1, exploration drill results, no recovery or metallurgical parameters have been applied.



SILVER VIPER  
MINERALS

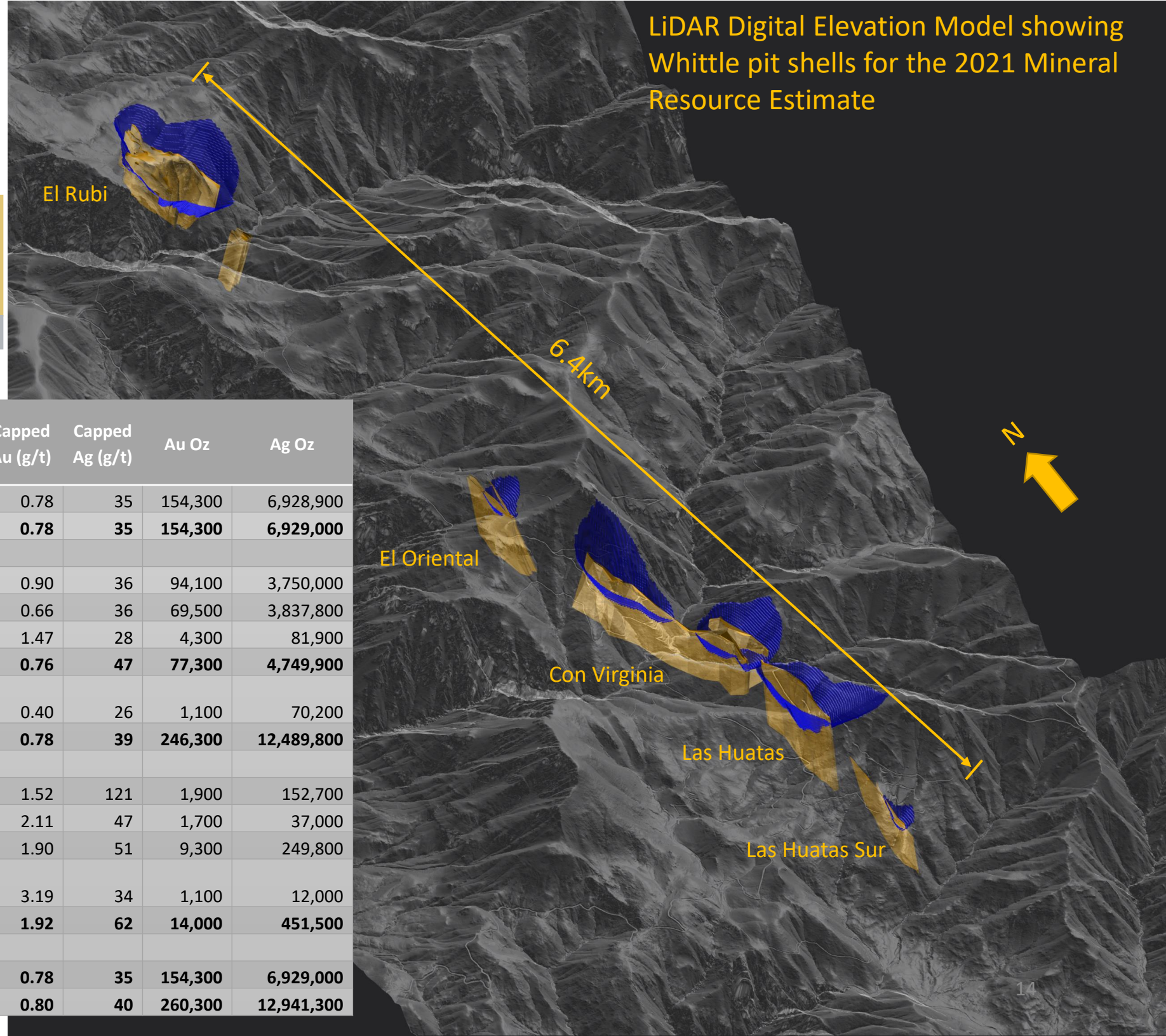
# La Virginia Project – El Rubi Drilling showing Whittle pit shell outline





SILVER VIPER  
MINERALS

# 2021 Mineral Resource Estimate



Deposit	Method	Class	Tonnes	Capped Au (g/t)	Capped Ag (g/t)	Au Oz	Ag Oz
El Rubi	Open pit	Indicated	6,179,000	0.78	35	154,300	6,928,900
<b>Total</b>	<b>Open Pit</b>	<b>Indicated</b>	<b>6,179,000</b>	<b>0.78</b>	<b>35</b>	<b>154,300</b>	<b>6,929,000</b>
El Rubi	Open pit	Inferred	3,255,000	0.90	36	94,100	3,750,000
Con Virginia	Open Pit	Inferred	3,279,000	0.66	36	69,500	3,837,800
El Oriental	Open Pit	Inferred	91,000	1.47	28	4,300	81,900
Las Huatas	<b>Open Pit</b>	<b>Inferred</b>	<b>3,169,000</b>	<b>0.76</b>	<b>47</b>	<b>77,300</b>	<b>4,749,900</b>
Las Huatas S	Open Pit	Inferred	83,000	0.40	26	1,100	70,200
<b>Total</b>	<b>Open pit</b>	<b>Inferred</b>	<b>9,877,000</b>	<b>0.78</b>	<b>39</b>	<b>246,300</b>	<b>12,489,800</b>
Con Virginia	Underground	Inferred	39,000	1.52	121	1,900	152,700
El Oriental	Underground	Inferred	25,000	2.11	47	1,700	37,000
Las Huatas	Underground	Inferred	152,000	1.90	51	9,300	249,800
Las Huatas S	Underground	Inferred	11,000	3.19	34	1,100	12,000
<b>Total</b>	<b>Underground</b>	<b>Inferred</b>	<b>227,000</b>	<b>1.92</b>	<b>62</b>	<b>14,000</b>	<b>451,500</b>
<b>Total</b>		<b>Indicated</b>	<b>6,179,000</b>	<b>0.78</b>	<b>35</b>	<b>154,300</b>	<b>6,929,000</b>
<b>Total</b>		<b>Inferred</b>	<b>10,104,000</b>	<b>0.80</b>	<b>40</b>	<b>260,300</b>	<b>12,941,300</b>

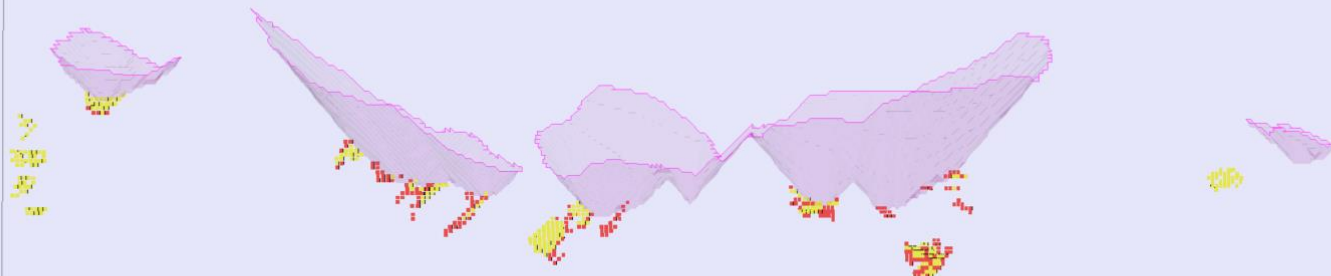


SILVER VIPER  
MINERALS

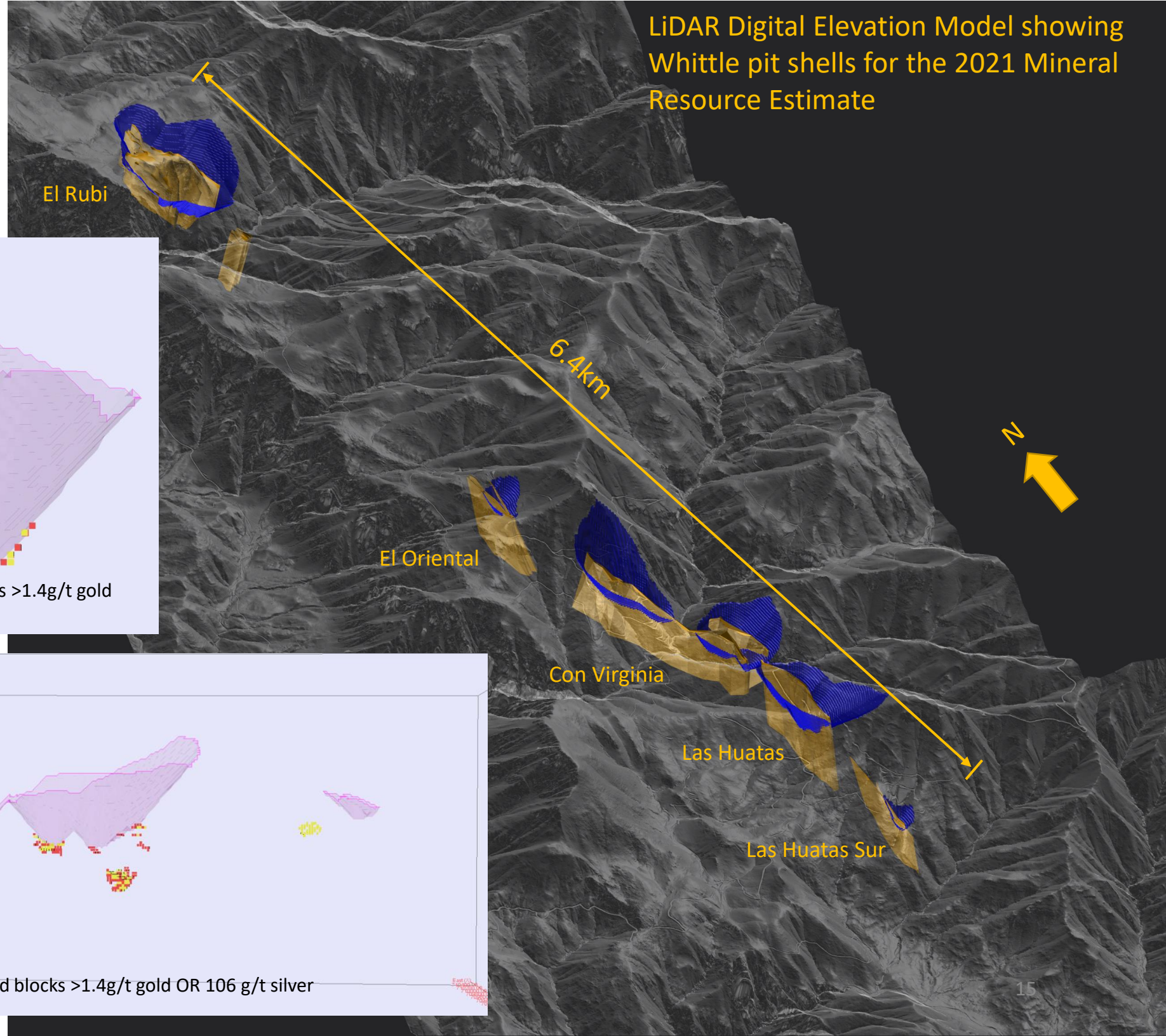
May 201 Mineral Resource Estimate



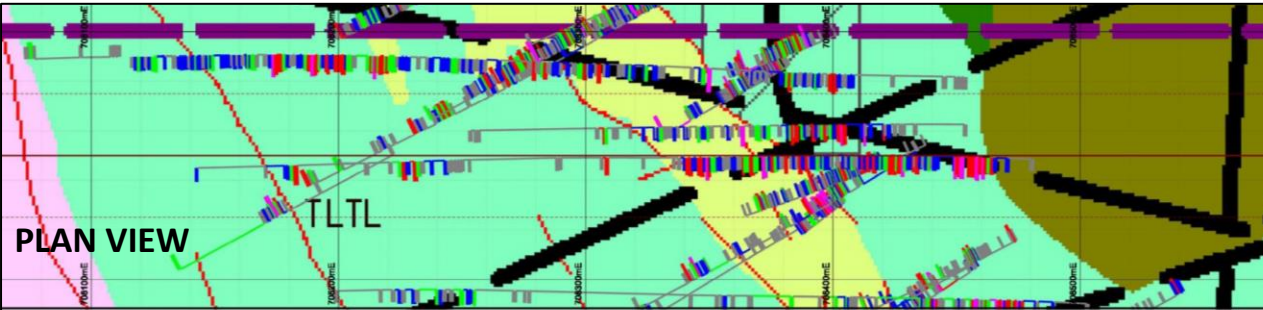
Long section showing El Rubi pit shell with underground blocks >1.4g/t gold OR 106 g/t silver



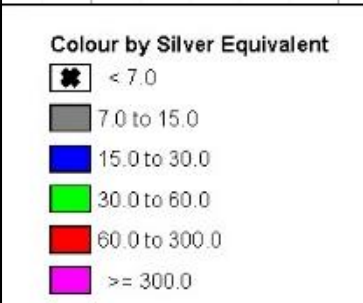
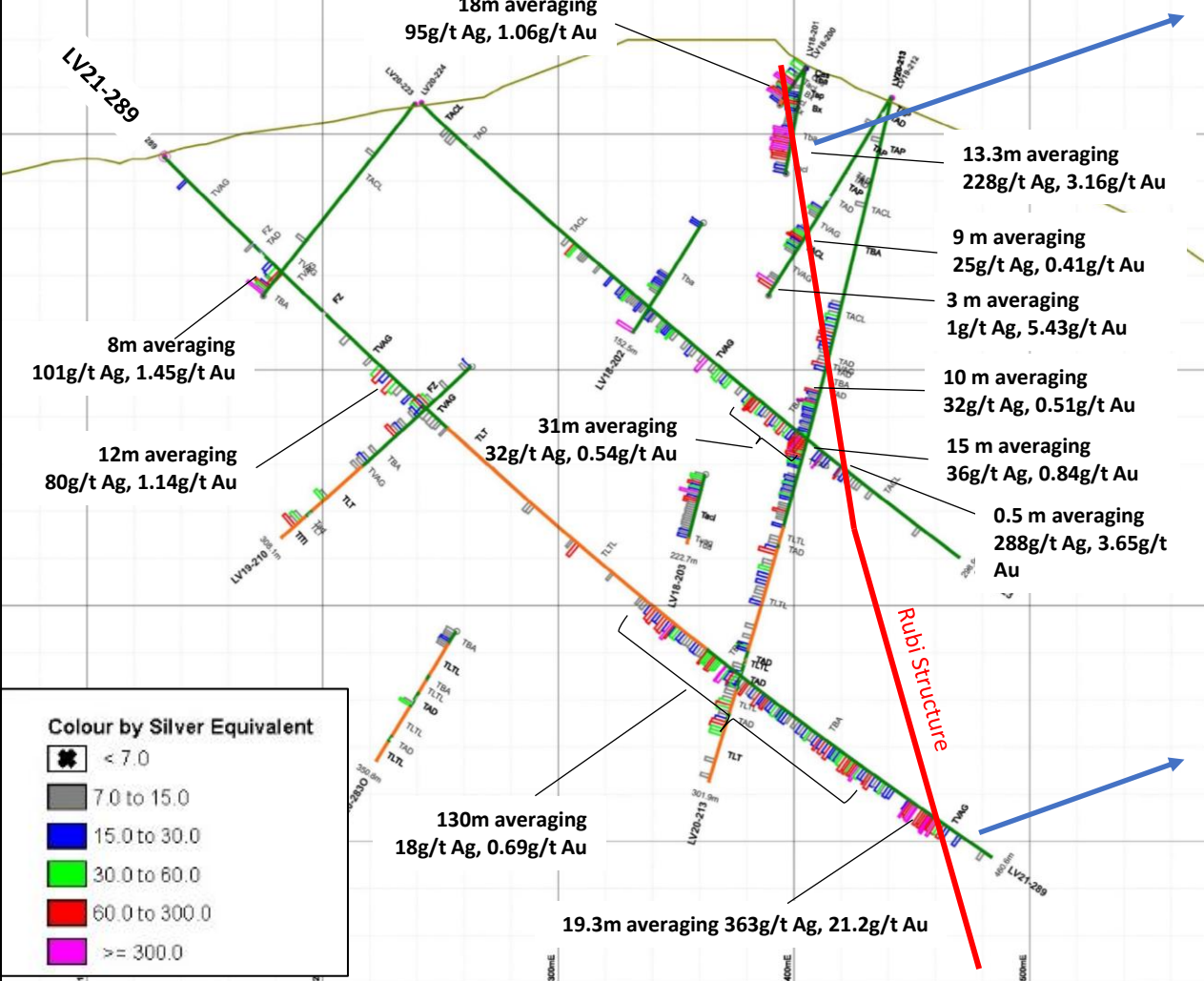
Long section showing southern resource area underground blocks >1.4g/t gold OR 106 g/t silver



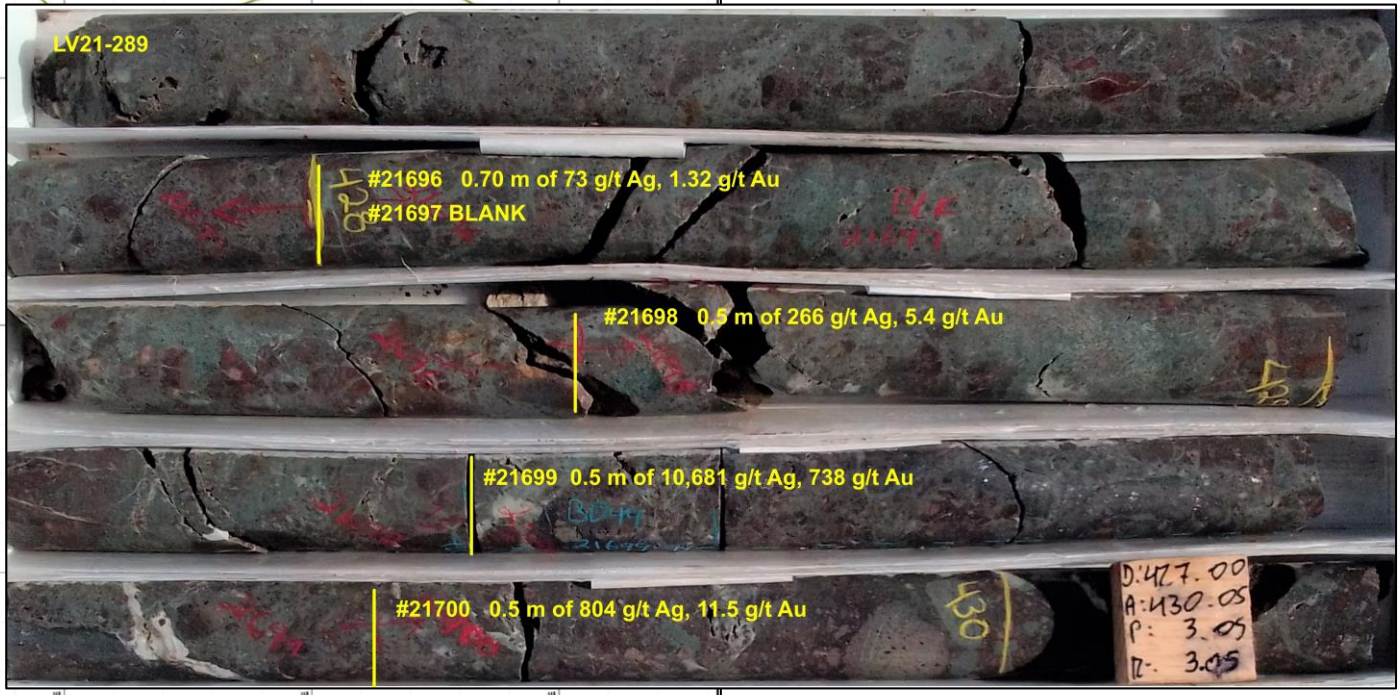
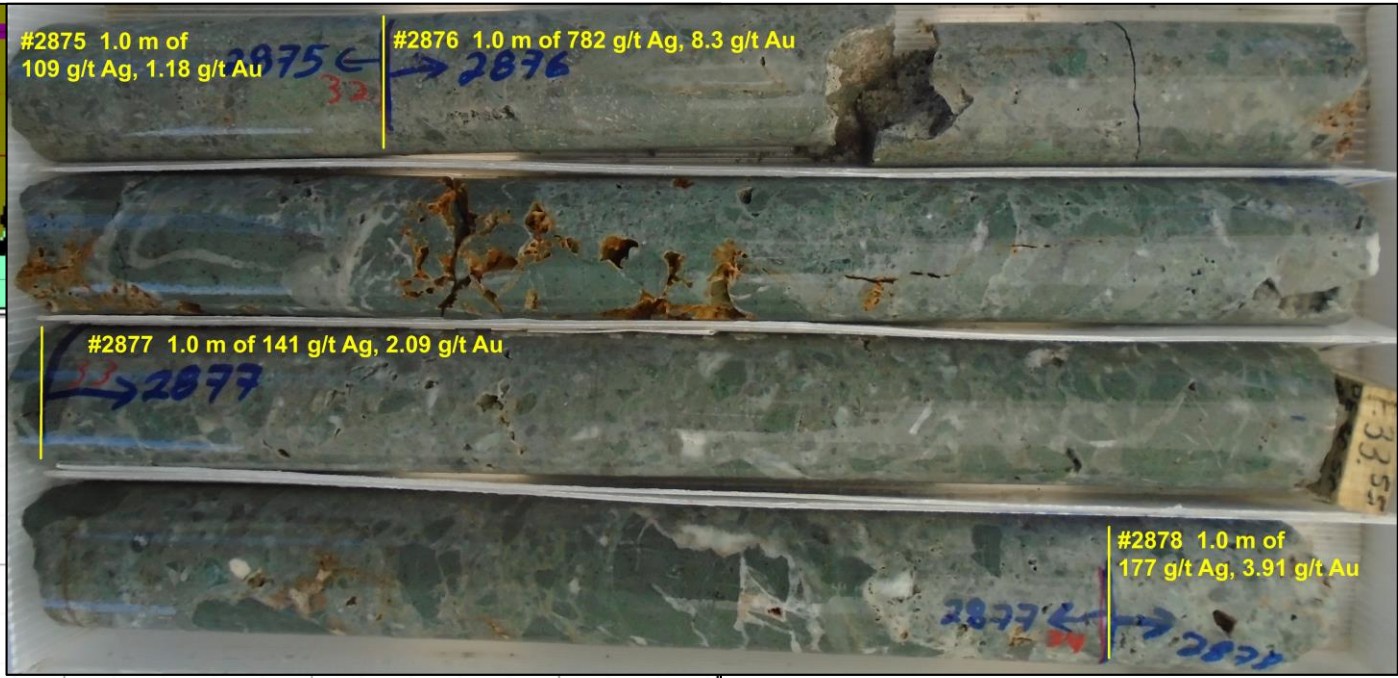
LiDAR Digital Elevation Model showing  
Whittle pit shells for the 2021 Mineral  
Resource Estimate



A-A' SECTION LOOKING NORTH  
(window +/- 25m)



<b>Geology Units</b> <ul style="list-style-type: none"><li>Qc - Colluvium</li><li>TAD - Andesite dyke</li><li>TBA - Andesite flow</li><li>TACL - Andesite flow</li><li>TAP - Andesite porphyritic</li><li>TLTL - Rhyolite tuff</li></ul>	<b>Scale</b> 1 : 1250	<b>Plot Date</b> 16-Apr-2021	<b>Sheet</b> @sheet1 of @sheet2
	<b>Plot File:</b> 3301950_SEC		



SECTION 3301950N

Looking North

Silver Viper Minerals Corp

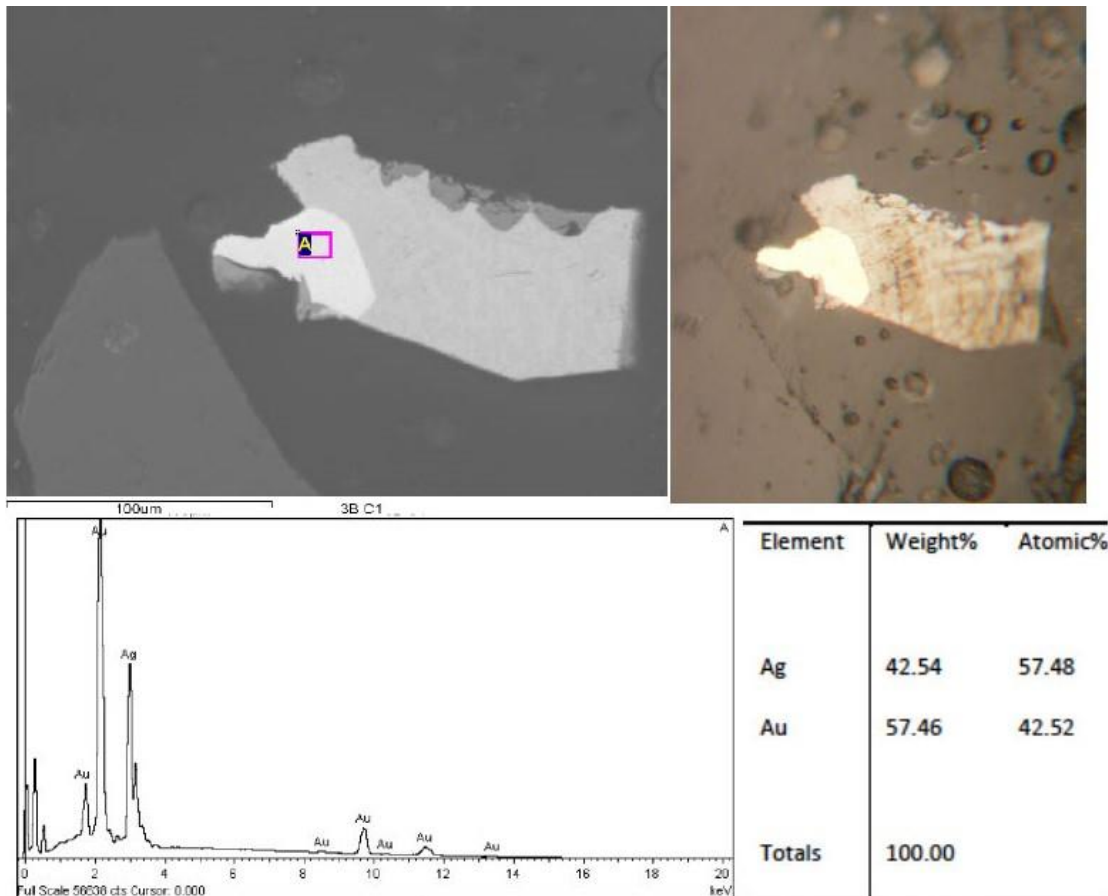




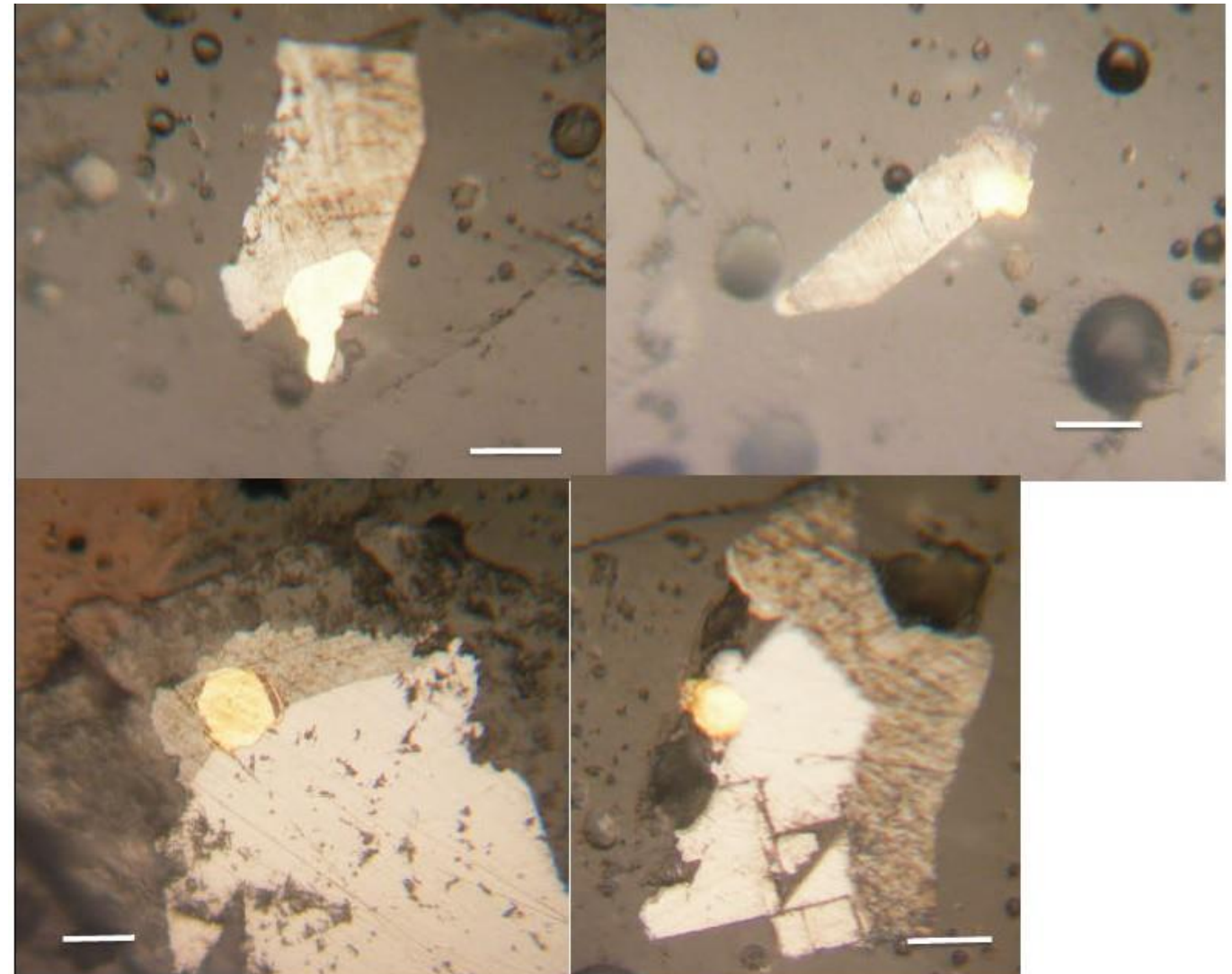
SILVER VIPER  
MINERALS

# El Rubi Scanning Electron Microscopy

- Preliminary Scanning Electron Microscope study of drill core samples shows silver reports as sulphides in Argentite and alloyed with gold in the form of Electrum.



Arriba izquierda, imagen al MEB en electrones retrodispersados, partícula de oro y argentita (observar escala); arriba derecha, fotomicrografía al microscopio en luz reflejada. Abajo, espectro EDS y composición de oro en la zona analizada.



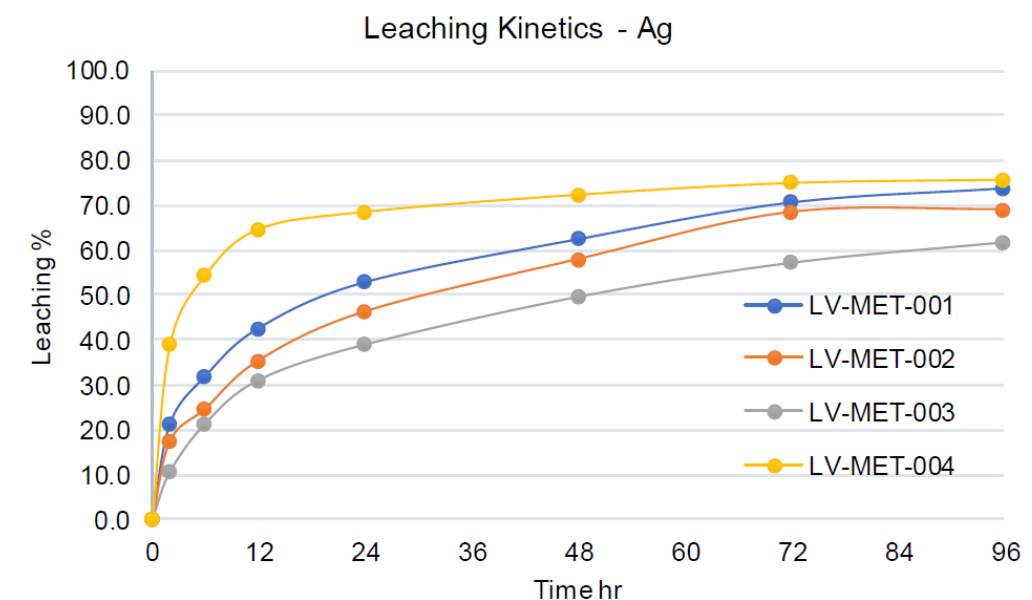
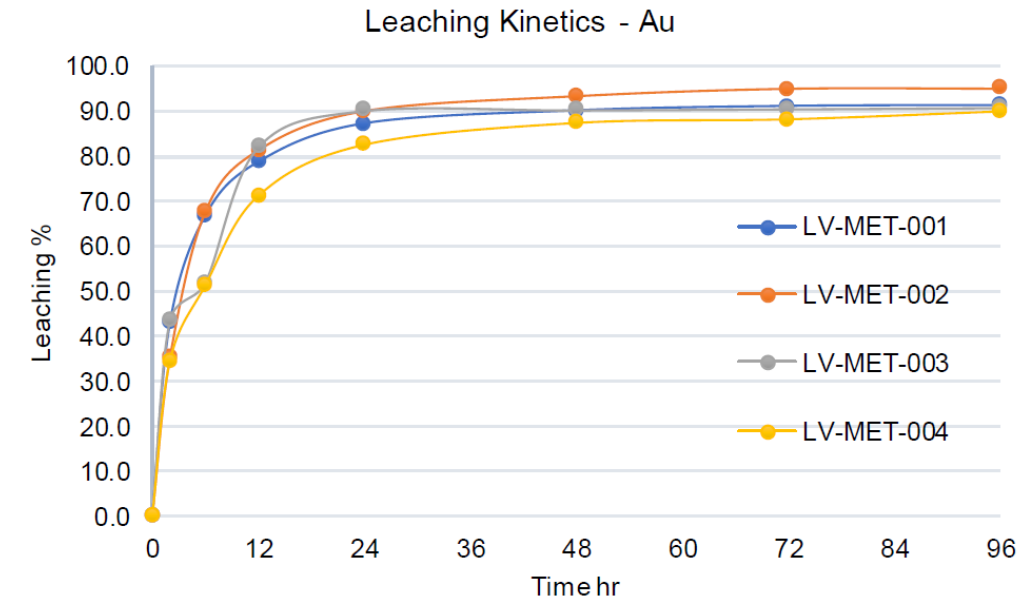
Arriba, oro con argentita. Abajo, oro con argentita y galena. La escala representa 0.020 mm (20 µm)



# El Rubi Preliminary Metallurgical Test Work

- Bottle roll tests were conducted on four 500g composites.
- Initial round designed as a simple test to confirm amenability to conventional treatment methods.
- Analyses detected nugget gold effect in high grade sample LV-MET-002.
- Recoveries ranged from 90.0% - 95.1% for gold, and 61.9% - 75.9% for the initial test.
- Tests confirm leachability of material from El Rubi.
- Subsequent optimization work is expected to **significantly increase** silver recoveries.

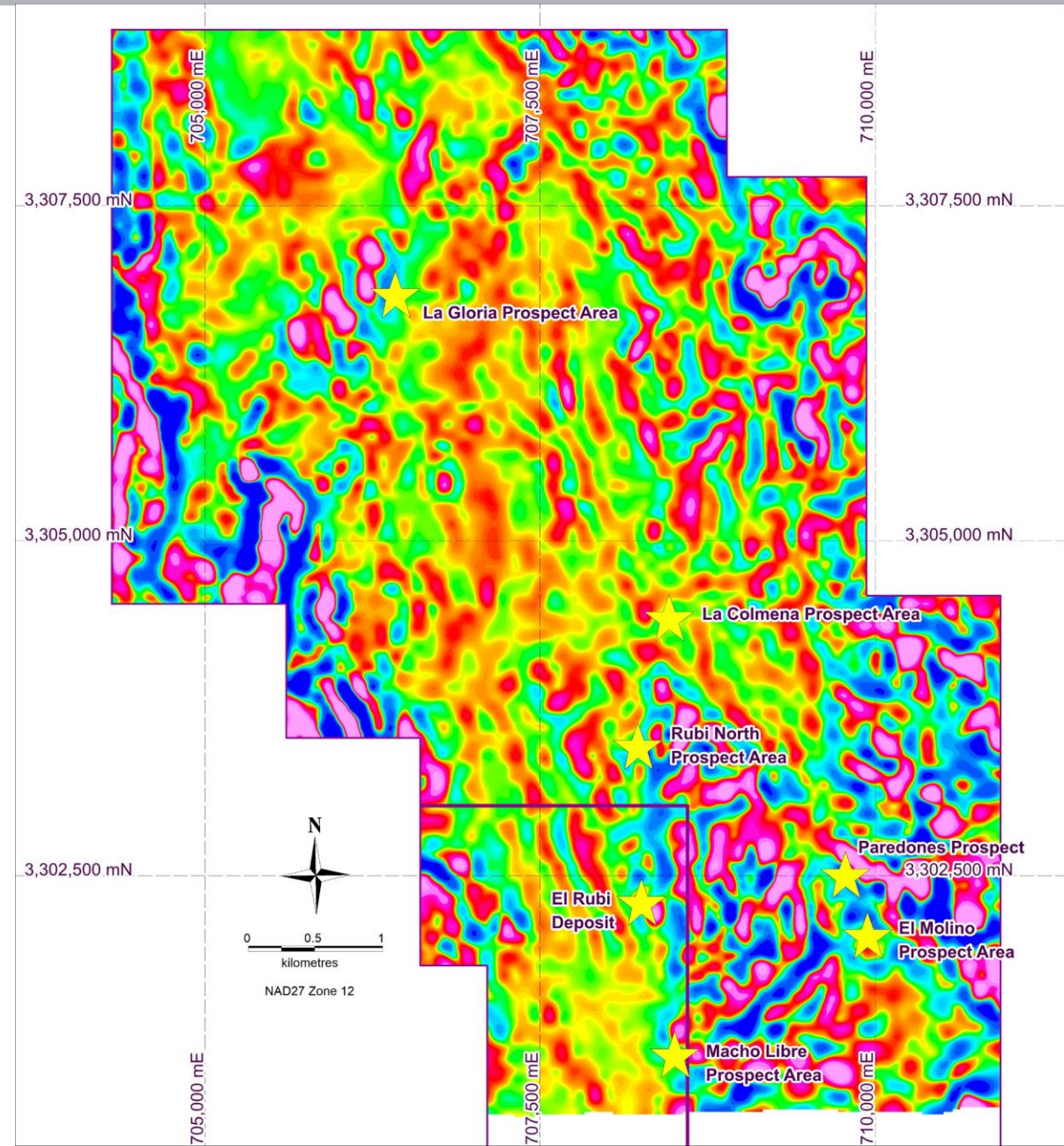
Description	LV-MET-001		LV-MET-002		LV-MET-003		LV-MET-004	
	Au g/t	Ag g/t	Au g/t	Ag g/t	Au g/t	Ag g/t	Au g/t	Ag g/t
Calculated Head	2.16	160.9	4.65	274.4	3.29	220.7	0.60	41.5
Head Assay	2.62	170.0	8.28	263.0	3.98	217.0	0.65	36.0
Residue	0.19	42.0	0.23	85.0	0.30	84.0	0.06	10.0
Leaching	Au %	Ag %	Au %	Ag %	Au %	Ag %	Au %	Ag %
	<b>91.2</b>	<b>73.9</b>	<b>95.1</b>	<b>69.0</b>	<b>90.9</b>	<b>61.9</b>	<b>90.0</b>	<b>75.9</b>
Reagents Consumption	NaCN kg/t	CaO kg/t	NaCN kg/t	CaO kg/t	NaCN kg/t	CaO kg/t	NaCN kg/t	CaO kg/t
	1.4	2.6	1.3	1.8	1.1	1.6	1.1	2.0





## El Rubi – Prospective Targets

- Image depicted shows aeromagnetic data – Calculated Vertical Derivative (Magnetics Reduced to Pole)
- El Rubi Surface Program includes reconnaissance mapping, soil sampling and prospecting across the property
- Airborne magnetic survey indicates prospective extensions north and southward from El Rubi
- Exploration continues to refine prospective target areas in advance of diamond drilling
- Silver Viper has engaged Quantec Geoscience to collect 3DIP and deep sensing Magnetotelluric data over El Rubi mineralized system, expected to commence October 2021





## Management & Directors

*Silver Viper's management team, is part of the **Belcarra Group**, is an organization comprised of technical and capital markets professionals in the mining industry. Our model focusses on exploration and as such can draw on the knowledge of our 4 in-house senior geologists with their 150 years of combined experience to identify opportunities to discover and develop quality exploration projects that maximize shareholder value. We are the same team recognized for the **discovery** of Orko Silver Corp's **La Preciosa Silver-Gold Deposit** in Durango, Mexico which we began as a grass roots project, proved up over 270 million ounce of silver and sold to Coeur Mining for over \$350 million.*

Board of Directors, Management and Technical Team		
Gary Cope	Chairman of the Board	Director
Steve Cope	President & CEO	Director
Carla Hartzenberg, CPA,CA	CFO	Director
Dale Brittliffe, P.Geo	Vice President, Exploration	
Alicia Ford	Manager Business Development	
Ben Whiting, P.Geo	Technical Advisor	
Art Freeze, P.Geo		Director
Ross Wilmot, CPA, CA		Director



# Share Structure

## Capital Structure

Shares Outstanding	95.13M
Warrants (exercise price \$0.57)	12.97M
Options (average price \$0.48)	7.75M
Fully Diluted Shares	115.86M

## Notable and Major Shareholders

Institutional <ul style="list-style-type: none"> <li>• US Global Investors</li> <li>• Ingalls and Snyder Brokerage Accounts</li> <li>• Sprott Asset Management</li> <li>• Donald Smith &amp; Co Value Add Fund</li> <li>• Contrarian Group</li> <li>• Commodity Capital</li> <li>• Crestcat Capital</li> </ul>	60%
Management	23%
Retail	17%

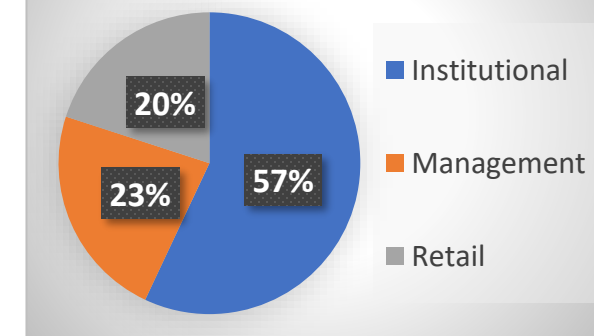
## Silver Viper Minerals Corp.

TSX.V Listing	VIPR
OTCQB Listing	VIPRF
Current Price	\$0.54
Cash	~\$3.2M

## Research Coverage

Red Cloud Securities	David Talbot
----------------------	--------------

## Ownership





SILVER VIPER  
MINERALS

## La Virginia Project - Environmental



- Recycling system.
- Safely recycled used oil and professionally disposed.
- Compost system.
- Water recirculation system for use in the camp toilets.
- Donation of 25 garbage cans, distributed in Nacori Chico.
- Drilling water recirculation system.



SILVER VIPER  
MINERALS

## La Virginia Project - CSR



- Mother's day celebration gift donations.
- Children's day celebration gift donations.
- Video projector equipment donation to the elementary school.
- Donation of COVID-19 medication and personal protection to the local clinic.
- Defibrillator equipment donation.
- Local baseball league uniform donation.
- Diesel donation for municipal road repairs.





- ✓ **High Quality Asset** - historic work and database
- ✓ **Mining Friendly Jurisdiction** – Mexico's top gold producing state
- ✓ **Management and Technical Team** - history of making discoveries and delivering value
- ✓ **Blue Sky Potential** – expanding El Rubi discovery and testing new targets
- ✓ **Strong Shareholder Support** - with management and institutional owning over 80%
- ✓ **Well-Financed** – completed \$6 million dollar financing June 2021



SILVER VIPER  
MINERALS

## Contact Us



Silver Viper Minerals Corp



Suite 300 - 1055 W. Hastings St.  
Vancouver, BC Canada V6E 2E9



(604) 687-8566



(604) 687-6365



[info@silverviperminerals.com](mailto:info@silverviperminerals.com)



[www.silverviperminerals.com](http://www.silverviperminerals.com)