



Silver Viper Minerals Corp.

TSX.V:VIPR OTCQB:VIPRF

Forward Looking Statements



CAUTIONARY NOTE TO US INVESTORS

The United States Securities and Exchange Commission ("SEC") permits US Mining companies, in their filings with the SEC, to disclose only those mineral deposits that a company can economically and legally extract or produce. We use certain terms in this presentation, such as "measured", "indicated", and "inferred" resources, which the SEC guidelines strictly prohibit US registered companies from including in their filings with the SEC. Any estimates of mineral resources shown in the Silver Viper Minerals Corp. presentation have been prepared in accordance with definition standards of the Canadian National Instrument 43-101 Standards of Disclosure for Mineral Projects ("NI 43-101"), which may differ from definition standards of the United States Securities and Exchange Commission ("SEC") Industry Guide 7.

QUALIFIED PERSON

All technical content found in the Silver Viper Minerals Corp. presentation has been reviewed & approved by Ben Whiting, P.Geo., Technical Advisor of Belcarra Management Group Ltd. and a Qualified Person under Canadian NI 43-101 Standards of Disclosure for Mineral Projects.

This presentation of Silver Viper Minerals Corp. (the "Company") contains "forward-looking information" within the meaning of the United States "Private Securities Litigation Reform Act of 1995" and applicable Canadian securities legislation. Statements containing forward-looking information express, as at the date of this presentation, the Company's plans, estimates, forecasts, projections, expectations, or beliefs as to future events or results and Silver Viper does not intend, and does not assume any obligation to, update such statements containing the forward-looking information. Generally, forward-looking information can be identified by the use of forward-looking terminology such as "plans," "projects," or "projected," "expects," or "does not expect," "is expected," "estimates," "forecasts," "scheduled," "intends," "anticipates," or "does not anticipate," or "believes," or variations of such words and phrases, or statements that certain actions, events or results "may," "can," "could," "would," "might," or "will be taken," "occur," or "be achieved." Statements containing forward-looking information include, but are not limited to, statements with respect to the anticipated economic returns of any of the Company's projects, the expected results from exploration activities, the economic viability of the development of newly discovered ore bodies, the accuracy of mineral resource estimates, future production levels, the requirements for additional capital, the results of drilling, and Silver Viper's commitment to, and plans for developing, newly discovered and existing mineralized structures.

Statements containing forward-looking information involve known and unknown risks, uncertainties and other factors that may cause the actual results, level of activity, performance or achievements of Silver Viper Minerals Corp. and its operations to be materially different from those expressed or implied by such statements. Such factors include, among others, the actual results of current exploration activities, future prices of silver and gold, unpredictable risks and hazards relating to the development of our projects, and the speculative nature of exploration and development. Although the Company has attempted to identify important factors that could cause actual results to differ materially from those contained in forward-looking statements, there may be other factors that cause results to be materially different from those anticipated, described, estimated, assessed or intended. There can be no assurance that any statements containing forward-looking information will prove to be accurate as actual results and future events could differ materially from those anticipated in such statements. Accordingly, undue reliance should not be placed on statements containing forward-looking information

Executive Summary



SILVER VIPER MINERALS CORP.

Silver Viper Minerals Corp. is a Canadian-based junior mineral exploration company focused on advancing precious metals projects in Mexico. The Company currently operates two key assets: its flagship La Virginia Gold-Silver Project in Sonora and the recently acquired Cimarron Gold-Copper Project in Sinaloa.

Silver Viper 100% owns the La Virginia gold-silver project acquired from Pan American Silver Corp. The project targets laterally extensive intrusive dykes and breccia zones hosting epithermal-style mineralization. The Company is building on 52,000m of historic drilling and continues to explore new zones, including the El Rubi discovery. A Titan MT Deep Penetrating Geophysical Survey in 2022 identified new anomalies that will guide the next phases of exploration and a future resource update. The 2025 drill program will be informed by these results, expanding El Rubi and testing several other targets identified, with the goal of making multiple new discoveries.

The Cimarron Project, also 100% owned, adds a compelling gold-copper porphyry system to Silver Viper's portfolio. Situated in a prolific mineral belt that extends from Arizona to Jalisco, Cimarron hosts two distinct mineralized zones: an alkaline porphyry system and a high-sulfidation epithermal system. This acquisition supports the Company's strategy to build scale through the addition of high-quality, district-scale exploration opportunities in well-established mining jurisdictions.

- ✓ **High-Grade Gold and Silver Discoveries**
- ✓ **Drilling Success and Upside Potential**
- ✓ **Resource Expansion Potential**
- ✓ **Strategically Located in 2 Prolific Mining Belts**
- ✓ **Full Ownership and Fully Permitted**
- ✓ **Previous Exploration Work**
- ✓ **Strong Metallurgical Results**
- ✓ **Management and Expertise**
- ✓ **Multiple Commodity Exposure**

Capital Structure



CAPITAL STRUCTURE

Shares Outstanding	66.14M
Warrants (average \$0.51)	19.38M
Options (average \$0.72)	6.47M
Fully Diluted Shares	91.99M

NOTABLE & MAJOR SHAREHOLDERS

Institutional US Global Investors Ingalls and Snyder Brokerage Accounts Sprott Asset Management Donald Smith & Co Value Add Fund Contrarian Group Commodity Capital	55%
Management	15%
Friends & Family	10%
Retail	20%

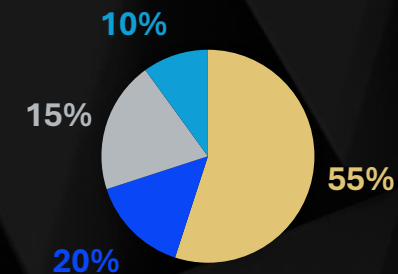
SILVER VIPER MINERALS CORP.

TSX.V Listing	VIPR
OTCQB Listing	VIPRF
Current Price	\$0.83

RESEARCH COVERAGE

Company	Analyst	Target
Red Cloud Securities Inc.	Taylor Combaluzier	\$2.50

OWNERSHIP



Management & Board



PART OF THE BELCARRA GROUP

*An organization comprised of technical and capital markets professionals in the mining industry. Our model focusses on exploration and as such can draw on the knowledge of our 4 in-house senior geologists with their 150 years of combined experience to identify opportunities to discover and develop quality exploration projects that maximize shareholder value. We are the same team recognized for the **discovery** of Orko Silver Corp's **La Preciosa Silver-Gold Deposit** in Durango, Mexico which we began as a grass roots project, proved up over 270 million ounce of silver and sold to Coeur Mining for over \$350 million.*

STEVE COPE | PRESIDENT, CEO & DIRECTOR

- 15+ years experience in the mining sector
- Corporate development for Orko Silver Corp, Barsele Minerals Inc, Orex Minerals Inc. and Timmins Gold Corp

TAJ SINGH (P.ENG, CPA) | CHAIRMAN

- 22 years experience in corporate development, capital markets, finance, project development, engineering, and operations
- Currently CEO of First Nordic Metals Corp.
- Former founding President and CEO of Mexico focused Discovery Silver Corp where he led a +30x market capitalization growth to over C\$500 million during his tenure. Former Director / Lead Independent Director of GT Gold Corp., acquired by Newmont Corporation in 2020 for approximately C\$400 million

ART FREEZE (P.GEO) | DIRECTOR

- 46 years of experience in mineral exploration & project management
- Previously Primary Consulting Geologist for Goldcorp Inc., and has held consulting, management & supervisory positions with international mining companies such as Cominco Ltd., Pasminco Exploration, Echo Bay Mines and Pan American Silver

TOBY PIERCE | DIRECTOR

- 25 years of geological and financial understanding within the resource sector
- Founder, CEO or director of numerous private and public mining and natural resource companies

Underexplored in 2 Major Mining Belts



LOCATION

- **La Virginia:** Located in the Sierra Madre Occidental, 220km E-NE of Hermosillo, 100 km N-NW of the Dolores Au-Ag operation, 90 km S-SE of the El Tigre Au-Ag Project
- **Cimarron:** Located in Porphyry Copper-Gold Belt in Sinaloa, less than 25km from Trinidad (Marlin Gold Mining Ltd.), Panuco / Copala (Vizsla Silver Corp.), Malpica / Los Azules
- Both projects are largely underexplored

SIZE

- **La Virginia:** 6,882 ha, 100% owned, fully permitted until 2027
- **Cimarron:** 2873 h, 100% owned

RESOURCE & POTENTIAL

- **La Virginia:**
 - existing resource:
 - Ind: 154k Au @0.78g/t
 - 6.92M Ag @35 g/t
 - Inf: 260k Au @ 0.8g/t
 - 12.94M Ag @ 40g/t
 - El Rubi Discovery & multiple new anomalies being tested
- **Cimarron:** Historical inferred mineral resource of 77,381 ounces (oz) of Au

COMMODITY EXPOSURE

- **La Virginia:** 40:60 Silver-Gold, growing resource with open pit heap leach potential followed by underground
- **Cimarron:** Porphyry gold-copper mineralization



La Virginia Project



- Maiden NI 43-101 resource May 2021
- Potential open pit, heap leach
 - mine, followed by underground operations
- El Rubi discovery hole LV18-201:
 - – 13.3 m at 3.16 g/t Au & 228 g/t Ag*
- 3rd phase drilling yielding high grade mineralization
 - – LV21-289: 1.5 m at 252 g/t Au & 3,917 g/t Ag*
- New broad zone of mineralization discovered, representing a second lode at El Rubi
- Upcoming drill program to expand maiden resource



El Rubi Discovery



- 2.5 km N of the main area of historical exploration by Pan American Silver and Minefinders
- Mineralization is structurally controlled by regional NNW trend
- El Rubi interpreted as fault offset continuation of Las Huatas/La Virginia mineralized trend
- Mineralized showings continue to be evaluated and advanced along trend from El Rubi



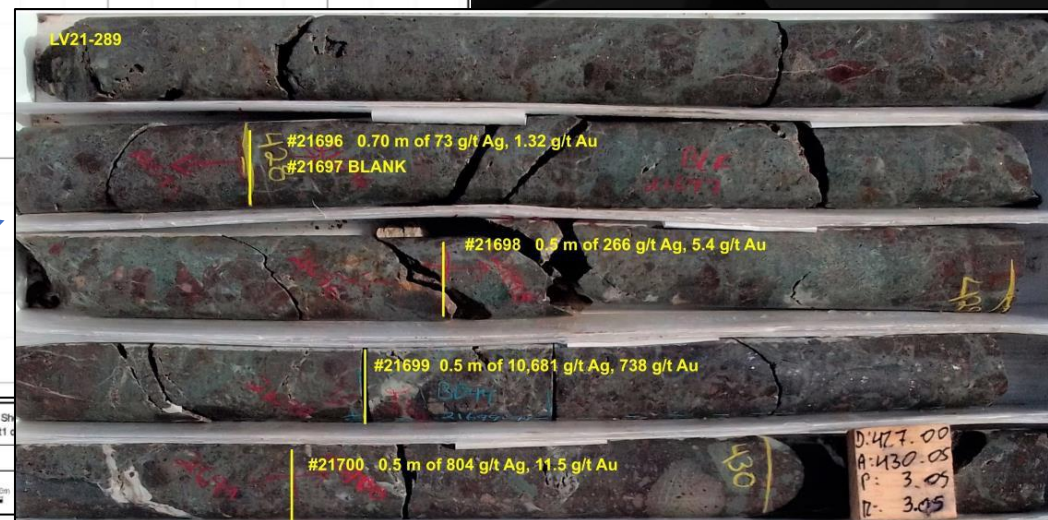
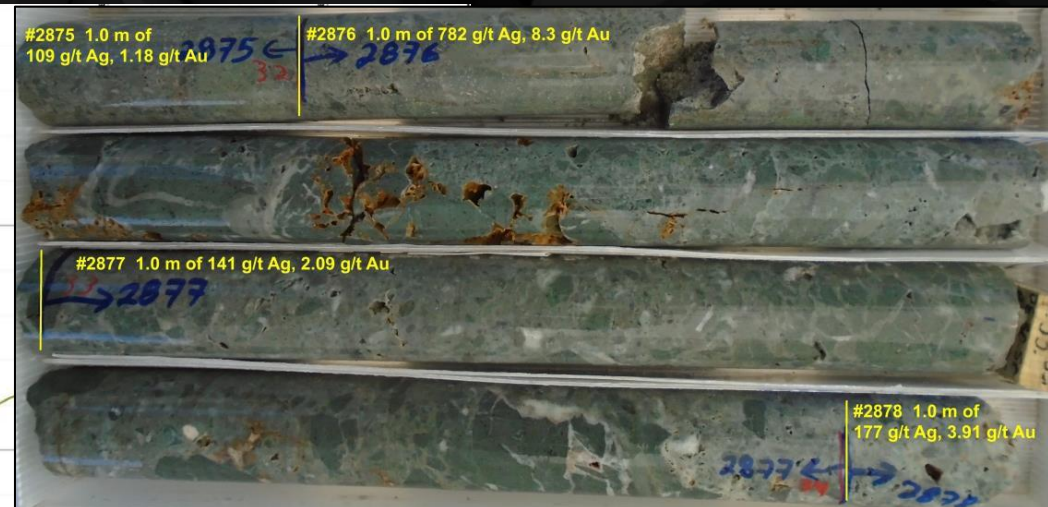
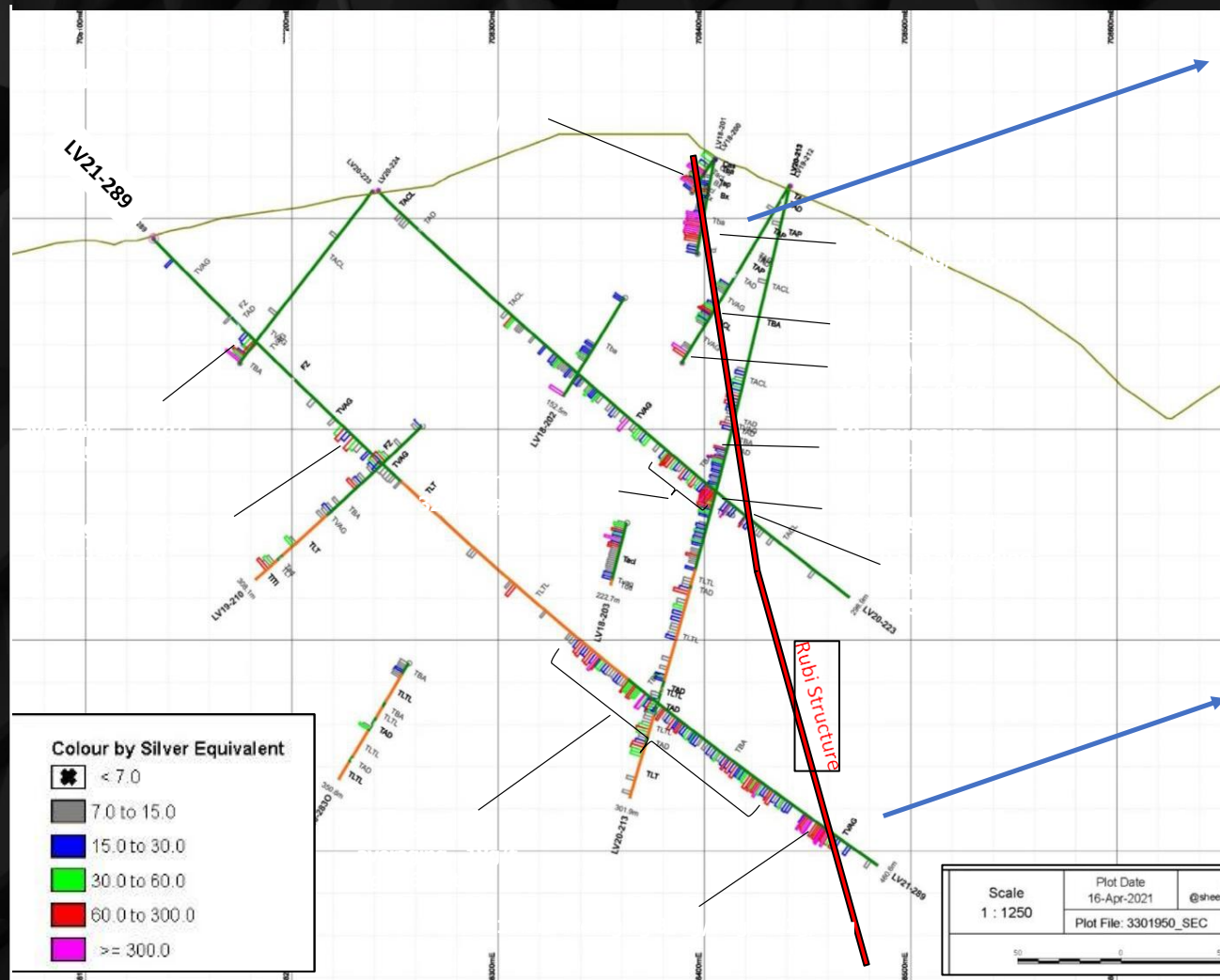
El Rubi Drilling Highlights



EL RUBI								
Hole	From (m)	To (m)	Interval (m)	Estimated True Width (m)	Ag (g/t)	Au (g/t)	Ag Equiv (g/t)	Au Equiv (g/t)
LV19-210	73	79	6	4.8	216	1.47	319	4.55
INCL	76	77	1	0.8	1071	6.32	1513	21.62
LV19-211	188	192.5	4.5	3	446	13.39	1384	19.77
INCL	189	190	1	0.67	1923	58.3	6004	85.77
LV20-215	188	195	7	6.3	86	14.4	1094	15.63
INCL	193.9	194.4	0.5	0.45	984	196.3	14725	210.36
LV20-217	265.5	273.5	8	4.56	401	4.45	713	10.18
INCL	270.5	272.5	2	1.14	1436	15.55	2524	36.06
AND	277.5	278.5	1	0.57	586	7.49	1110	15.86
AND	279.5	280.5	1	0.57	91	7.36	606	8.66
AND	301.5	303.5	2	1.14	201	8.44	791	11.3
LV20-218	184	187	3	1.89	530	5.82	937	13.39
INCL	185	186	1	0.63	1253	14.4	2261	32.3
AND	192	200	8	5.04	569	9.15	1210	17.28
INCL	194	197	3	1.89	1431	22.63	3015	43.08

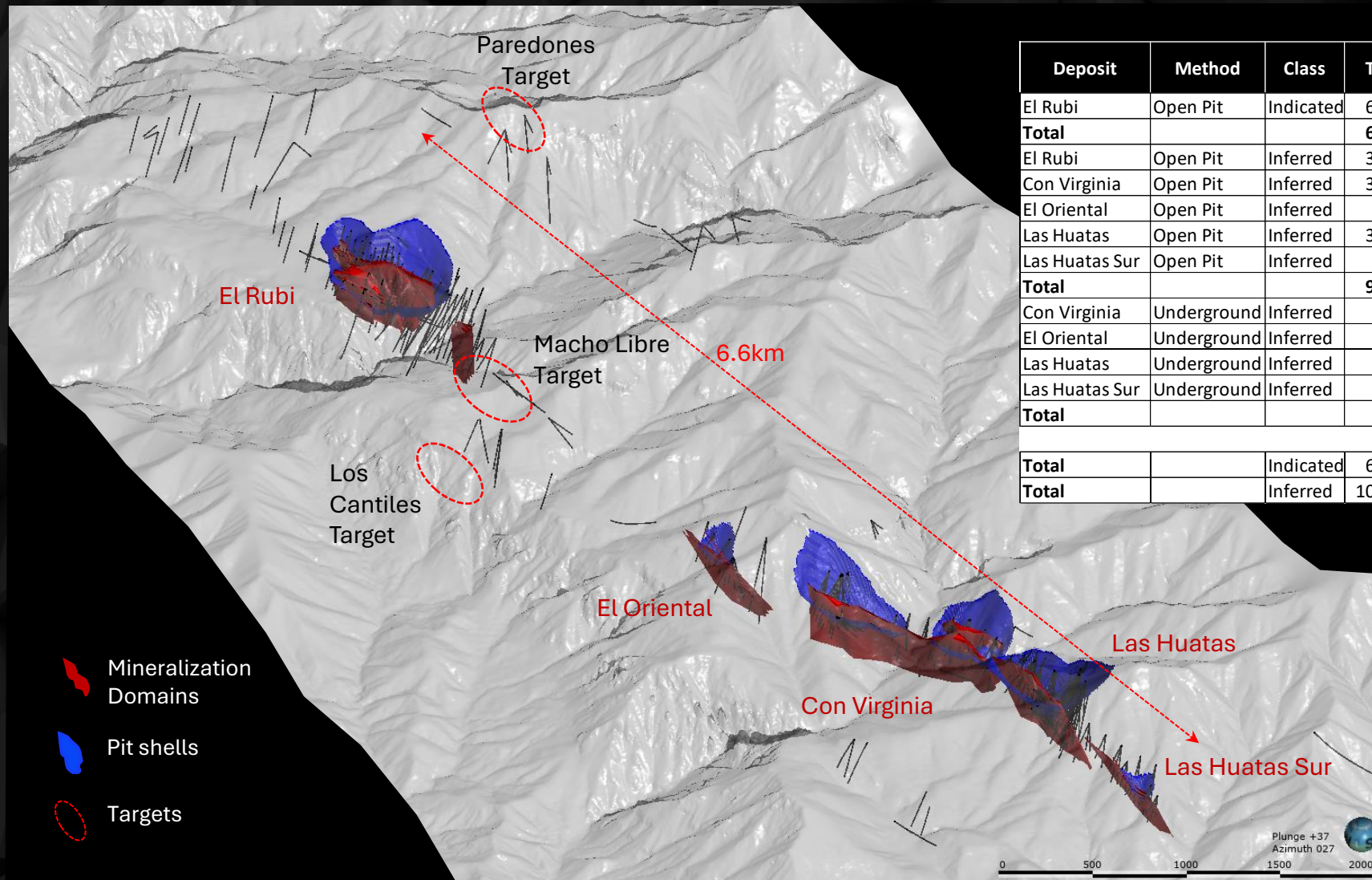
EL RUBI								
Hole	From (m)	To (m)	Interval (m)	Estimated True Width (m)	Ag (g/t)	Au (g/t)	Ag Equiv (g/t)	Au Equiv (g/t)
LV20-219	182	186	4	2.84	249	1.55	357	5.1
INCL	185	185.5	0.5	0.36	1584	5.56	1973	28.2
LV20-284	79	126	47	28.95	44	0.77	98	1.4
INCL	81	82.35	1.35	0.83	329	5.39	706	10.1
AND	103	106	3	1.85	170	2.95	377	5.38
AND	138	139	1	0.62	324	8.54	922	13.2
AND	317.5	319	1.5	0.92	231	11.8	1057	15.1
LV21-289	280.5	410.5	130	80.08	18	0.69	67	0.95
INCL	292.38	293.5	1.12	0.69	172	9.9	865	12.4
INCL	321.4	323.5	2.1	1.29	123	6.55	582	8.32
AND	418.2	437.5	19.3	11.89	363	21.2	1849	26.4
INCL	428.7	430.2	1.5	0.92	3917	252	21541	308
INCL	429.2	429.7	0.5	0.31	10681	738	62369	891

High-Grade Ag-Au Throughout El Rubi



Discovery holes at El Rubi included high-grade intercepts, including 8 m downhole averaging 9.15 g/t Au and 569 g/t Ag from hole LV18-218 (downhole length)

2021 Mineral Resource Estimate

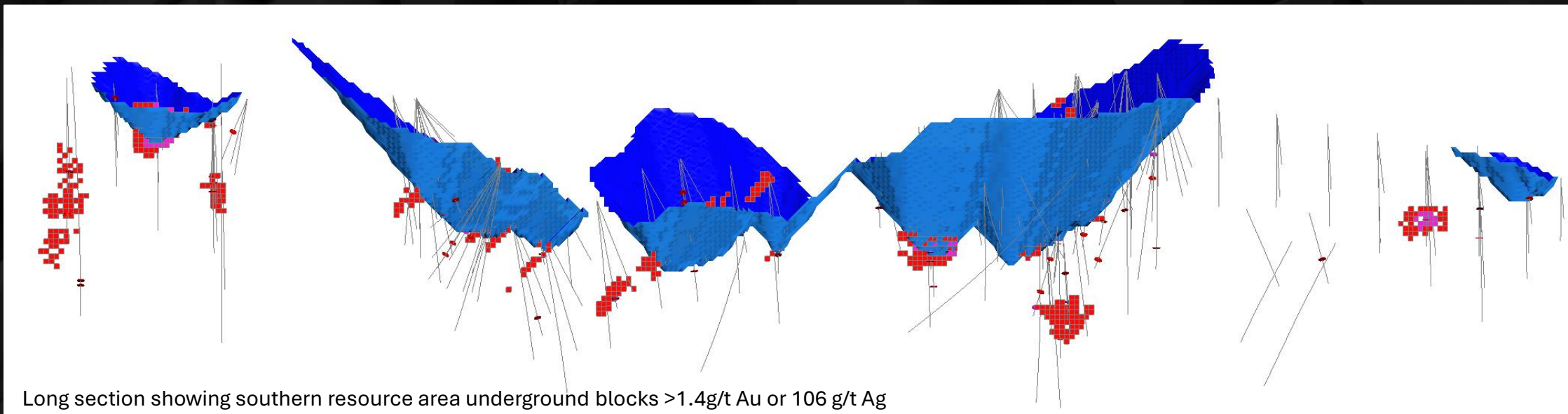
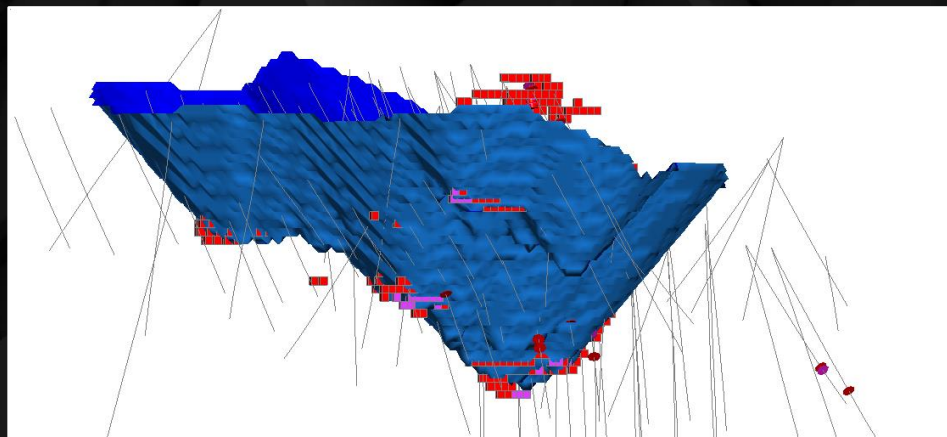


Deposit	Method	Class	Tonnes	Capped Au (g/t)	Capped Ag (g/t)	Au Oz	Ag Oz
El Rubi	Open Pit	Indicated	6,179,000	0.78	35	154,300	6,929,000
Total			6,179,000	0.78	35	154,300	6,929,000
El Rubi	Open Pit	Inferred	3,255,000	0.9	36	94,100	3,750,000
Con Virginia	Open Pit	Inferred	3,279,000	0.66	36	69,500	3,837,800
El Oriental	Open Pit	Inferred	91,000	1.47	28	4,300	81,900
Las Huatas	Open Pit	Inferred	3,169,000	0.76	47	77,300	4,749,900
Las Huatas Sur	Open Pit	Inferred	83,000	0.4	26	1,100	70,200
Total			9,877,000	0.78	39	246,300	12,489,800
Con Virginia	Underground	Inferred	39,000	1.52	121	1,900	152,700
El Oriental	Underground	Inferred	25,000	2.11	47	1,700	37,000
Las Huatas	Underground	Inferred	152,000	1.9	51	9,300	249,800
Las Huatas Sur	Underground	Inferred	11,000	3.19	34	1,100	12,000
Total			227,000	1.92	62	14,000	451,500
Total		Indicated	6,179,000	0.78	35	154,300	6,929,000
Total		Inferred	10,104,000	0.8	40	260,300	12,941,300

Resource Pit Shells & Underground



Open Pit optimization used for testing reasonable prospects for eventual economic extraction.



Long section showing southern resource area underground blocks >1.4g/t Au or 106 g/t Ag

Cimarron Project



- 106 historical drill holes
- Historical inferred mineral resource of 77,381 ounces (oz) of gold
- Located on the prolific porphyry belt from Arizona to Jalisco
- Potential to expand resources across two mineralized zones:
 - Alkaline porphyry gold system
 - High-sulfidation epithermal system
- Situated in a well-established mining jurisdiction
 - Less than 25km from Trinidad (Marlin Gold Mining Ltd.), Panuco / Copala (Vizsla Silver Corp.), Malpica / Los Azules



Sample from malachite rich metasomatized zone.



Typical mineralized quartz veinlets carrying fine disseminated chalcopyrite-pyrite in a potassic altered quartzo-monzodiorite CM13-016—60.9m, sample 5045 grading 1.78 g/t Au, Calerita (Pelletier, 2025).



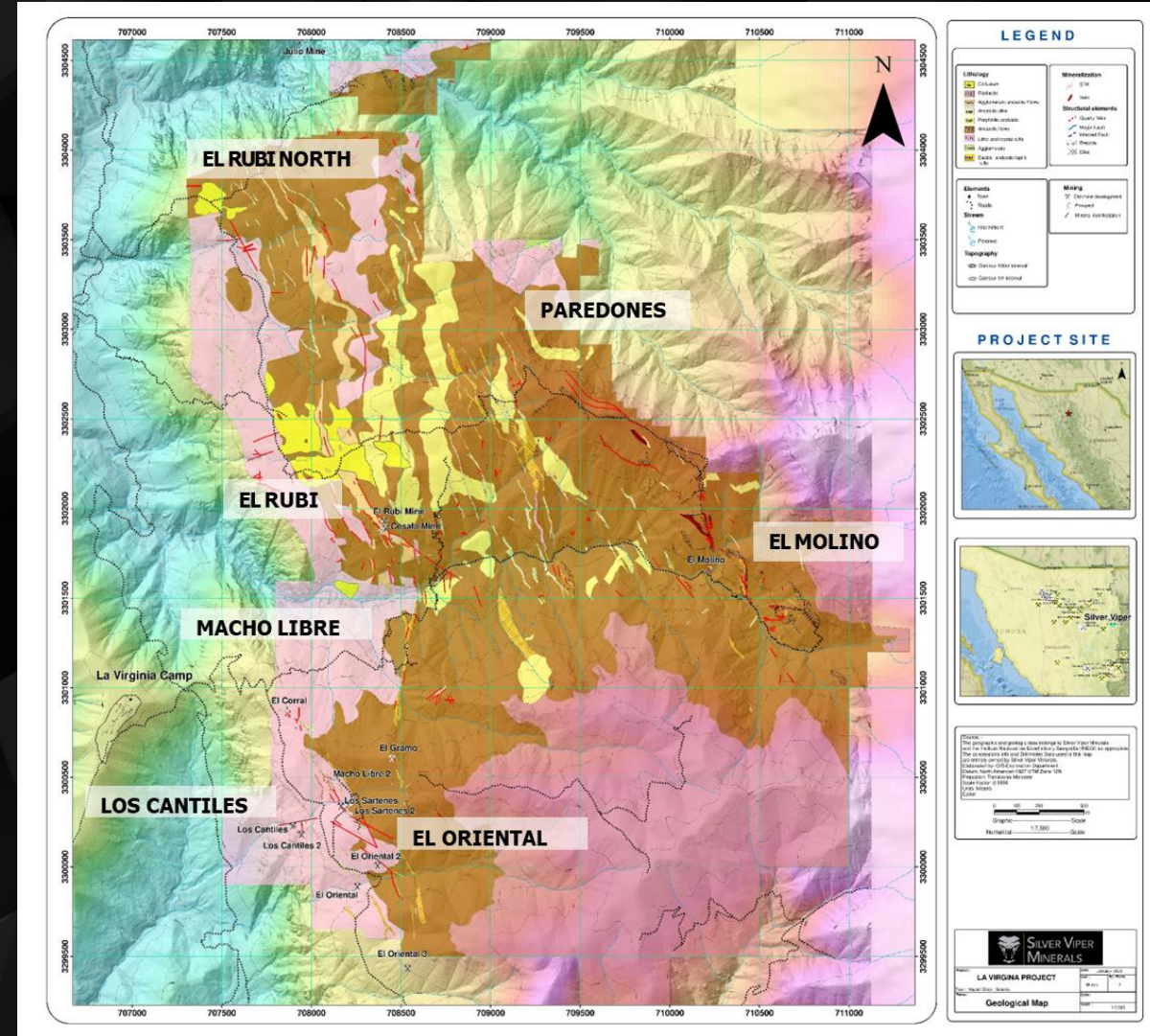


Exploration Summary & Future Drill Plan

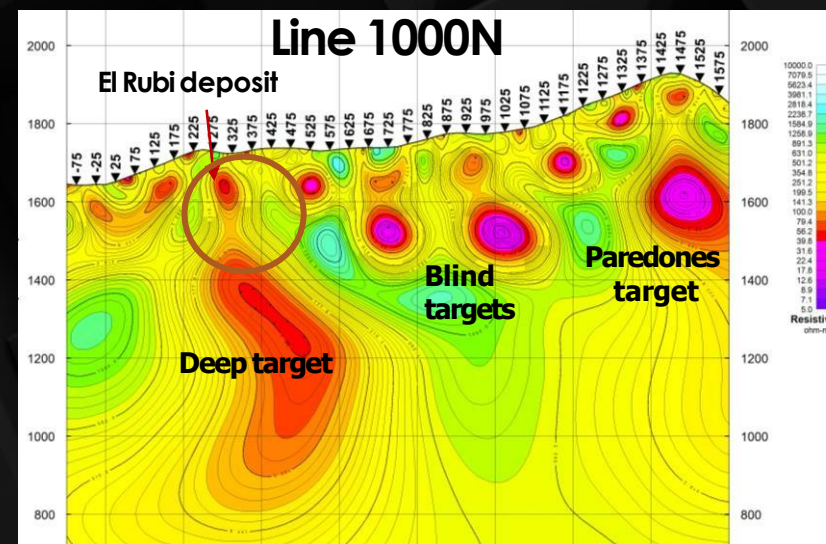
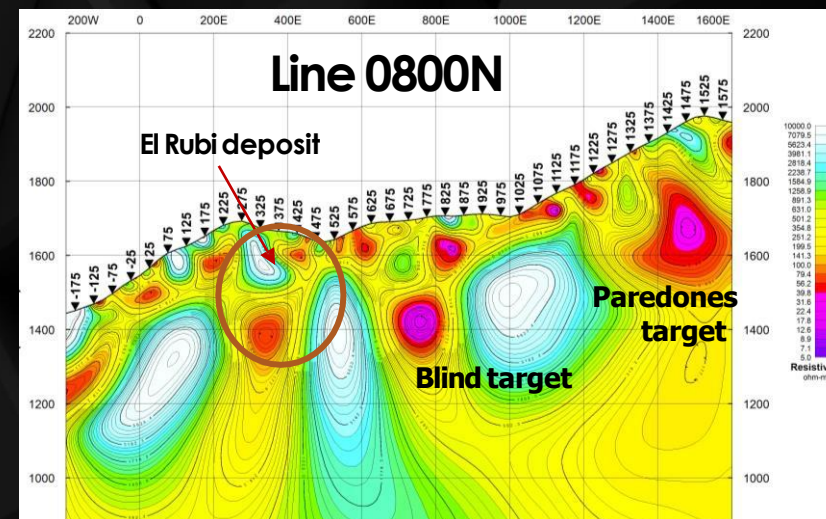
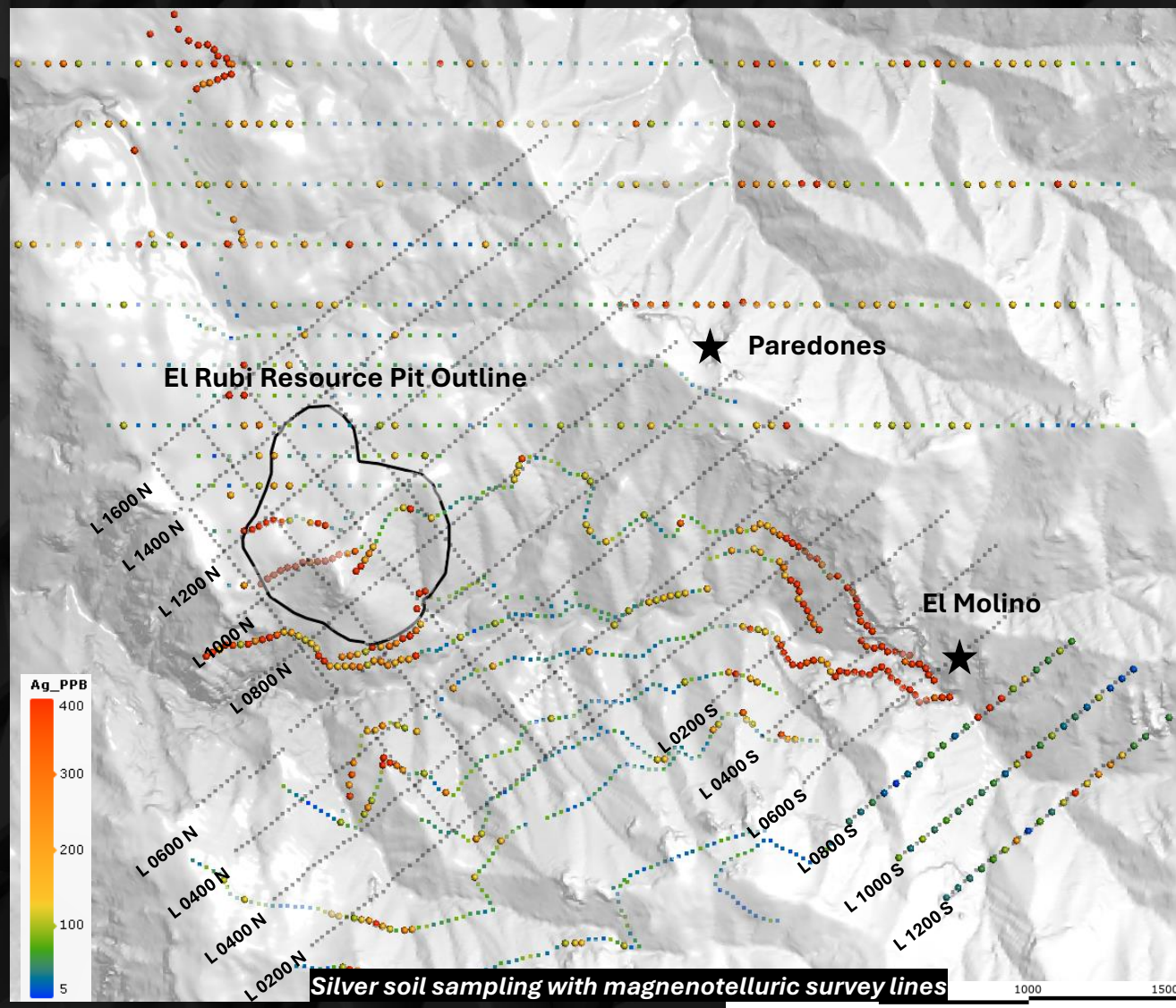
Exploration Summary & Plan



- **2025 exploration focus areas:**
 - La Virginia: El Rubi, El Molino, Los Cantiles, Macho Libre and El Oriental
 - Cimarron: Preliminary work mapping and sampling the property in preparation for eventual drill program
- **First phase 5000m program:** split between El Rubi and El Molino
- **20,000 m drill program focus:** to be informed by first 5000 m, with the goal to make new discoveries at El Rubi, El Oriental, Macho Libre, or other targets of interest, expansion drilling on potential discovery at El Molino from 5000 m program
- Eastern mineralized trend including Paredones and El Molino and several new structures outlined, containing breccias with quartz boiling textures, with initial results up to 8.3 g/t Au and 90 g/t Ag, more analytical results pending
- Dump samples up to 17.8 g/t Au and 1,001 ppm Ag, and chip-channel samples up to 4.2 g/t Au and 310 ppm Ag, located at the El Oriental Target
- Hydrothermal silicified breccia with up to 2.36 g/t Au and 71 g/t Ag outlined at the Macho Libre Target
- **El Molino:** continuous gold and silver anomalies, with supportive infill results from NW to SE along the trend



Magnetotellurics (MT) Geophysics



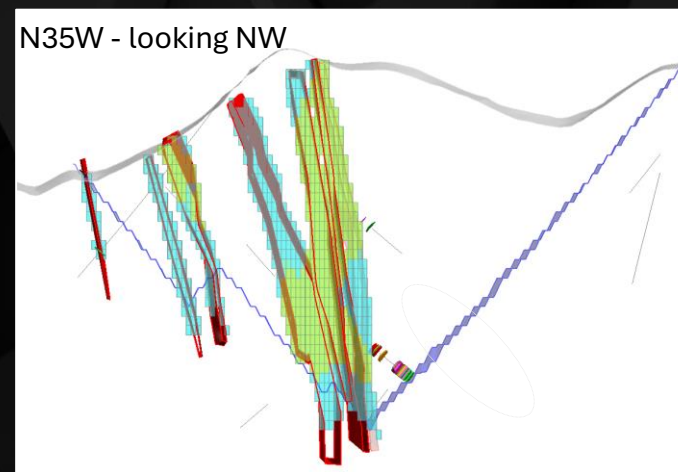
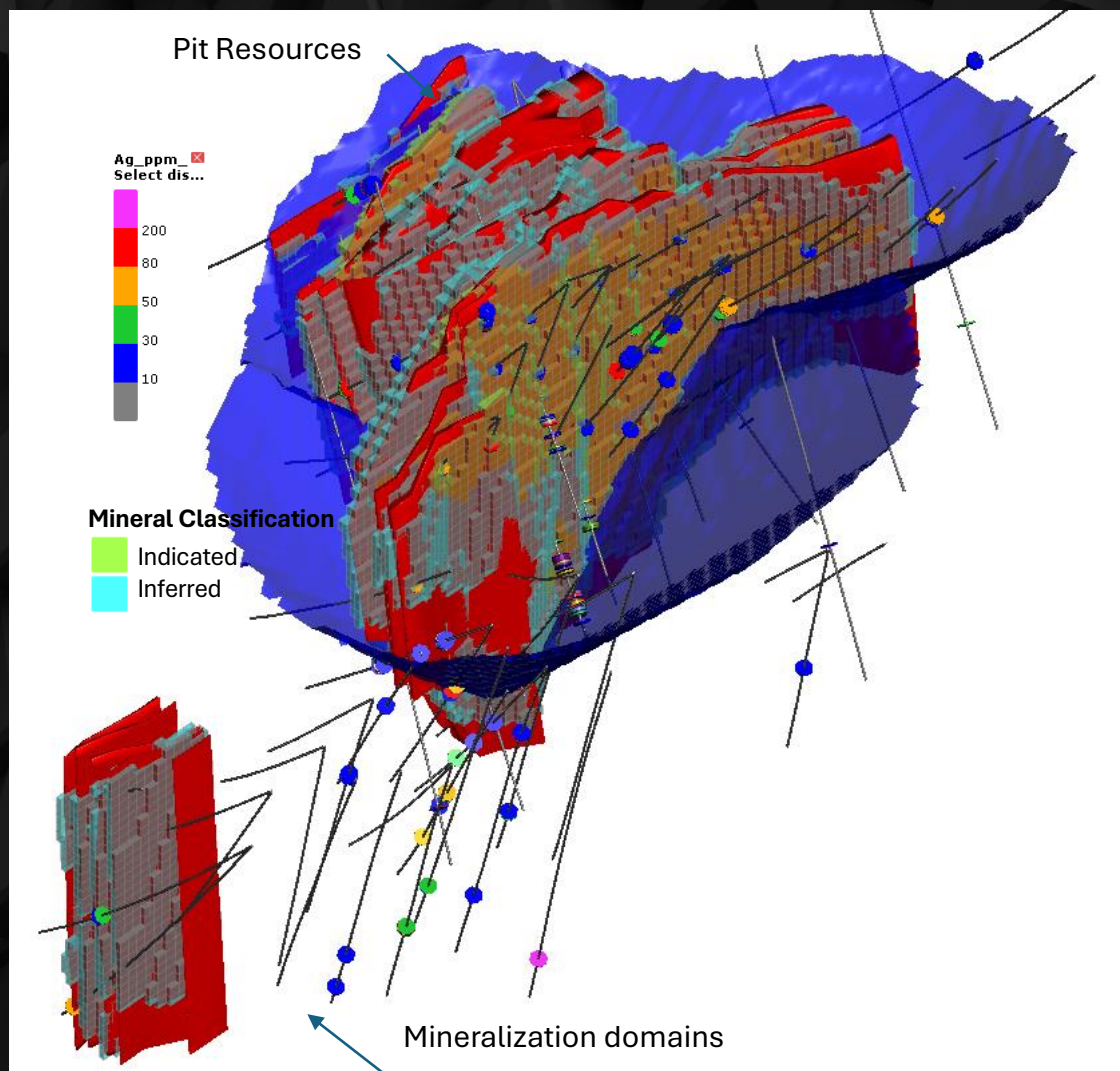
MT resistivity sections along lines L0800N & L1000N showing interesting high sub-vertical conductivity structures

New Targets

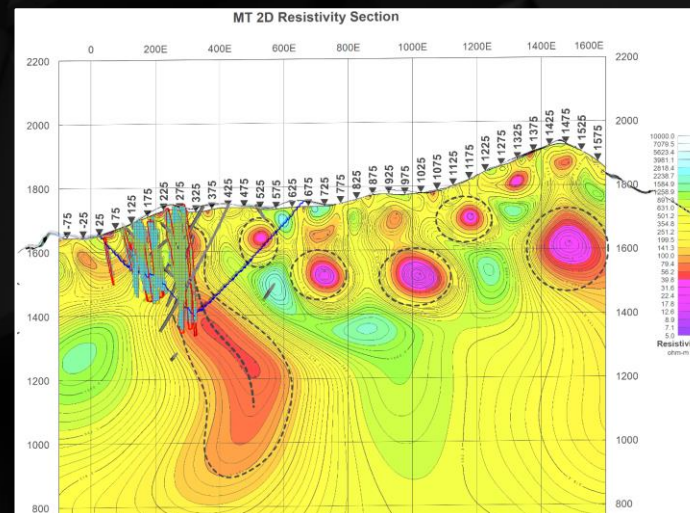


Geochemical assays are pending not only from J2 structure but also from J1 and La Original.

Mineral Resource Update Plan



N40W - looking north - Line 1000 N



- Integrate all drilling data
- Update mineralization domains
- Review the high-grade outliers, look for ways to improve or reduce the metal lost

ESG & Personnel Training



ENVIRONMENTAL

- Implemented systems for recycling, composting, and safe oil disposal
- Installed water recirculation systems for drilling and camp restrooms
- Donated 25 garbage bins to Nacori Chico for improved waste management

COMMUNITY

- Donated holiday gifts, medications, PPE, and medical equipment to local communities
- Provided a projector to a local school and uniforms to the baseball league
- Donated diesel fuel to support municipal road repairs

HEALTH & SAFETY

- Daily team safety briefings and vaccination protocols
- Provided training in first aid, injury response, and forest fire prevention (with CONAFOR)
- Conducted stress management sessions in compliance with NOM-035





SILVER VIPER MINERALS

TSX.V:VIPR, OTCQB:VIPRF



Suite 300 - 1055 W. Hastings St.
Vancouver, BC Canada V6E 2E9



(604) 687-8566



(604) 687-6365



info@silverviperminerals.com



www.silverviperminerals.com