



# SILVER VIPER MINERALS

La Virginia Project Update  
July 2021

# Forward Looking Statements

## **CAUTIONARY NOTE TO US INVESTORS**

The United States Securities and Exchange Commission ("SEC") permits US Mining companies, in their filings with the SEC, to disclose only those mineral deposits that a company can economically and legally extract or produce. We use certain terms in this presentation, such as "measured", "indicated", and "inferred" resources, which the SEC guidelines strictly prohibit US registered companies from including in their filings with the SEC. Any estimates of mineral resources shown in the Silver Viper Minerals Corp. presentation have been prepared in accordance with definition standards of the Canadian National Instrument 43-101 Standards of Disclosure for Mineral Projects ("NI 43-101"), which may differ from definition standards of the United States Securities and Exchange Commission ("SEC") Industry Guide 7.

## **QUALIFIED PERSON**

All technical content found in the Silver Viper Minerals Corp. presentation has been reviewed & approved by Dale Brittliffe, P.Geo., Vice President Exploration of Silver Viper Minerals Corp. and a Qualified Person under Canadian NI 43-101 Standards of Disclosure for Mineral Projects.

This presentation of Silver Viper Minerals Corp. (the "Company") contains "forward-looking information" within the meaning of the United States "Private Securities Litigation Reform Act of 1995" and applicable Canadian securities legislation. Statements containing forward-looking information express, as at the date of this presentation, the Company's plans, estimates, forecasts, projections, expectations, or beliefs as to future events or results and Silver Viper does not intend, and does not assume any obligation to, update such statements containing the forward-looking information. Generally, forward-looking information can be identified by the use of forward-looking terminology such as "plans," "projects," or "projected," "expects," or "does not expect," "is expected," "estimates," "forecasts," "scheduled," "intends," "anticipates," or "does not anticipate," or "believes," or variations of such words and phrases, or statements that certain actions, events or results "may," "can," "could," "would," "might," or "will be taken," "occur," or "be achieved." Statements containing forward-looking information include, but are not limited to, statements with respect to the anticipated economic returns of any of the Company's projects, the expected results from exploration activities, the economic viability of the development of newly discovered ore bodies, the accuracy of mineral resource estimates, future production levels, the requirements for additional capital, the results of drilling, and Silver Viper's commitment to, and plans for developing, newly discovered and existing mineralized structures.

Statements containing forward-looking information involve known and unknown risks, uncertainties and other factors that may cause the actual results, level of activity, performance or achievements of Silver Viper Minerals Corp. and its operations to be materially different from those expressed or implied by such statements. Such factors include, among others, the actual results of current exploration activities, future prices of silver and gold, unpredictable risks and hazards relating to the development of our projects, and the speculative nature of exploration and development. Although the Company has attempted to identify important factors that could cause actual results to differ materially from those contained in forward-looking statements, there may be other factors that cause results to be materially different from those anticipated, described, estimated, assessed or intended. There can be no assurance that any statements containing forward-looking information will prove to be accurate as actual results and future events could differ materially from those anticipated in such statements. Accordingly, undue reliance should not be placed on statements containing forward-looking information.

# Why Invest?

## 1) High Quality Asset

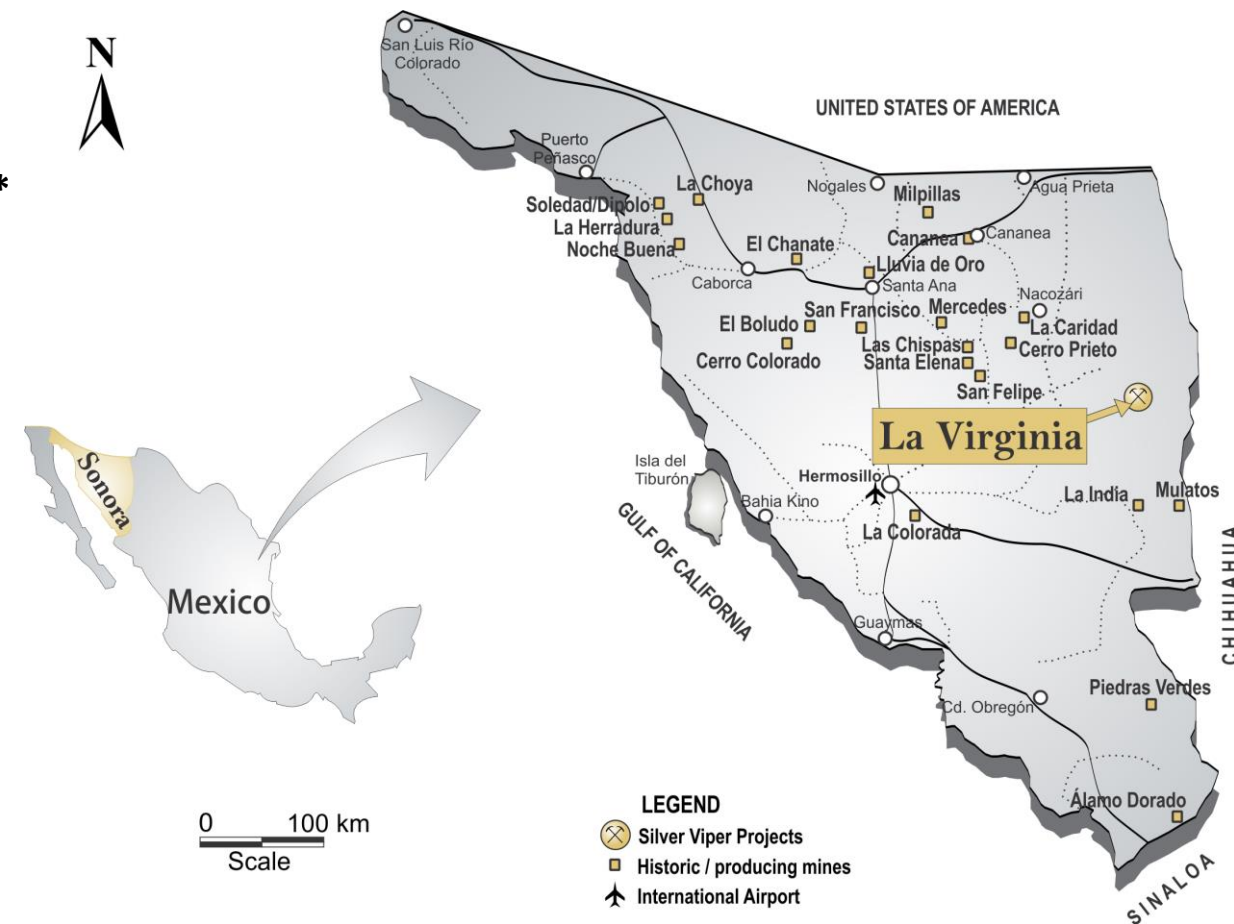
- Exciting Gold/Silver Project in Sonora Mexico – La Virginia
  - Maiden NI 43-101 resource delivered May 2021
  - Shows excellent potential for an open pit heap leach mine followed by underground operations
- El Rubi Discovery Zone – now a 43-101 Mineral Resource
  - El Rubi discovery hole LV18-201; **13.3m 3.16 g/t Au and 228 g/t Ag \***
  - 3<sup>rd</sup> phase drilling continues to yield high grade mineralization
  - New intercept LV21-289; **1.5m 252 g/t Au and 3,917 g/t Ag \***
  - New broad Zone of mineralization discovered representing a second lode at El Rubi in holes LV20-245, LV20-284 and LV21-289

## 2) Lots of Potential

- Working Towards Expanding Maiden Resource
  - Remainder of drilling in 2021 will expand upon the maiden resource
- Blue Sky Potential
  - Currently test additional anomalies in phase 3

## 3) Strong Management, Shareholder Support and Structure

- Strong technical team with over 150 years experience in the field
- Interests aligned with investors. Management owns 23%
- Major institutional ownership and support
- Low share count ~ 81 million shares

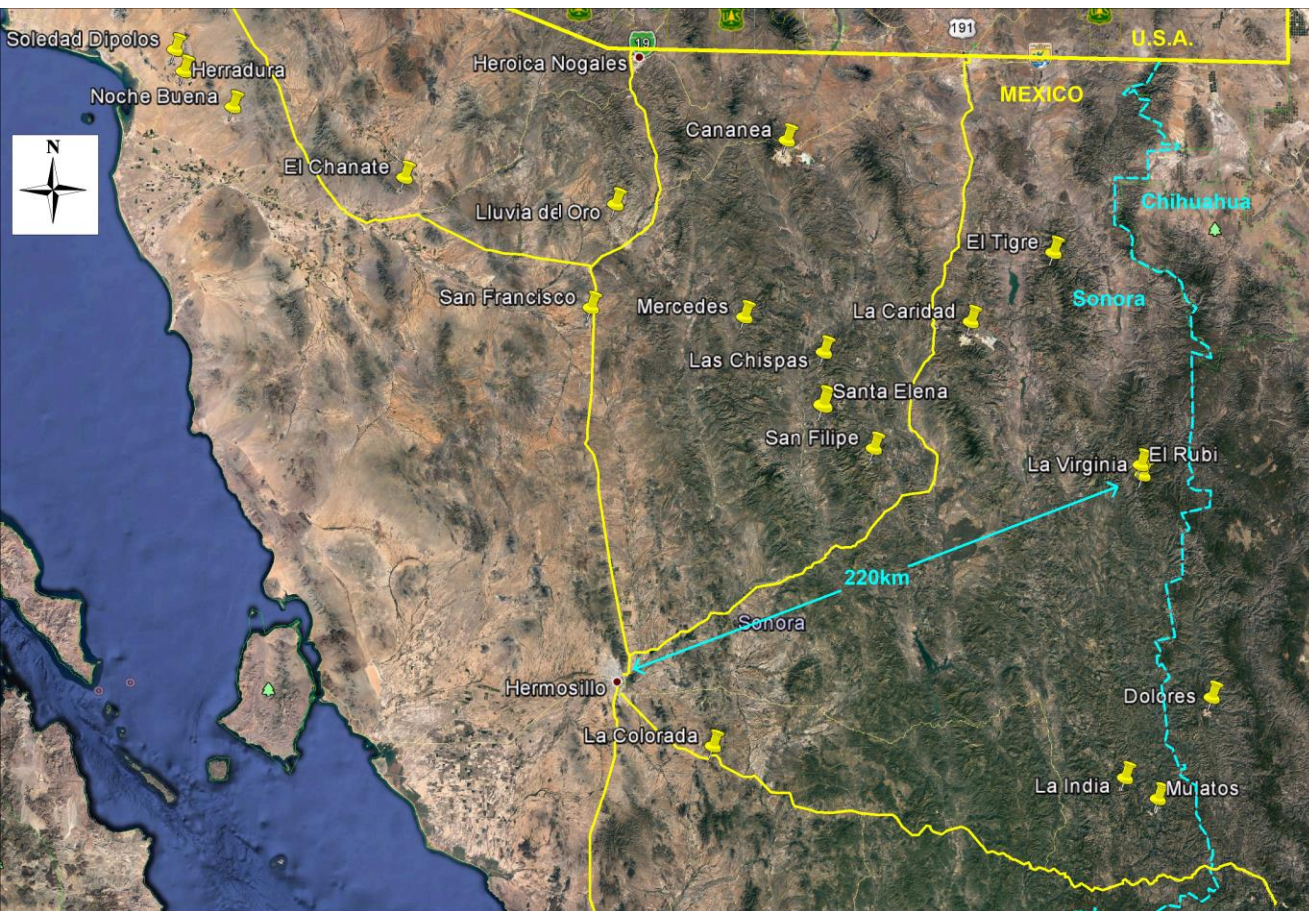






SILVER VIPER  
MINERALS

# La Virginia Gold-Silver Project



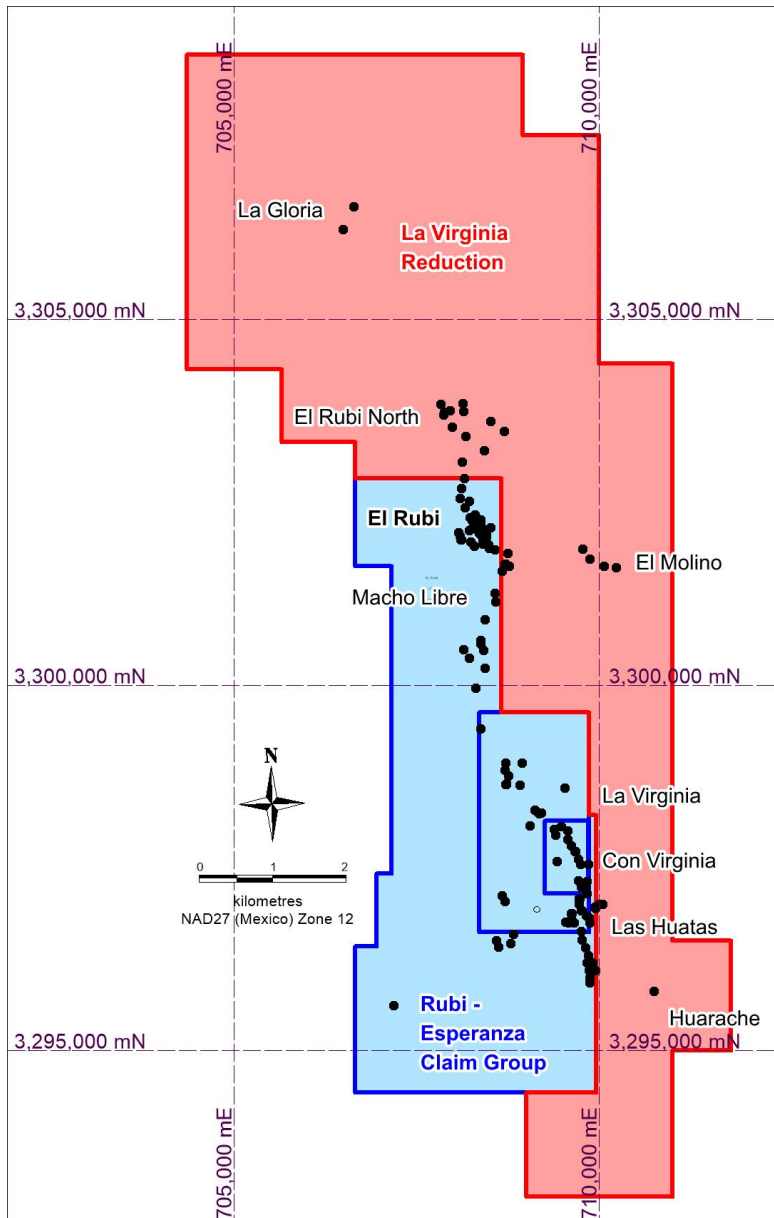
- Located 220km ENE of Hermosillo, Sonora, consolidated project totals 6,882 hectares in 4 claims and hosts both drilled and undrilled targets
- Situated in a largely unexplored portion of the Sierra Madre Occidental, within the northern Sierra Madre precious metal belt
- Project is 100km NNW of Dolores Au/Ag operation and 90km SSE of El Tigre Au/Ag operation
- Property accessed by Municipal roads from local centre, Nacori Chico, Sonora





SILVER VIPER  
MINERALS

# La Virginia Project

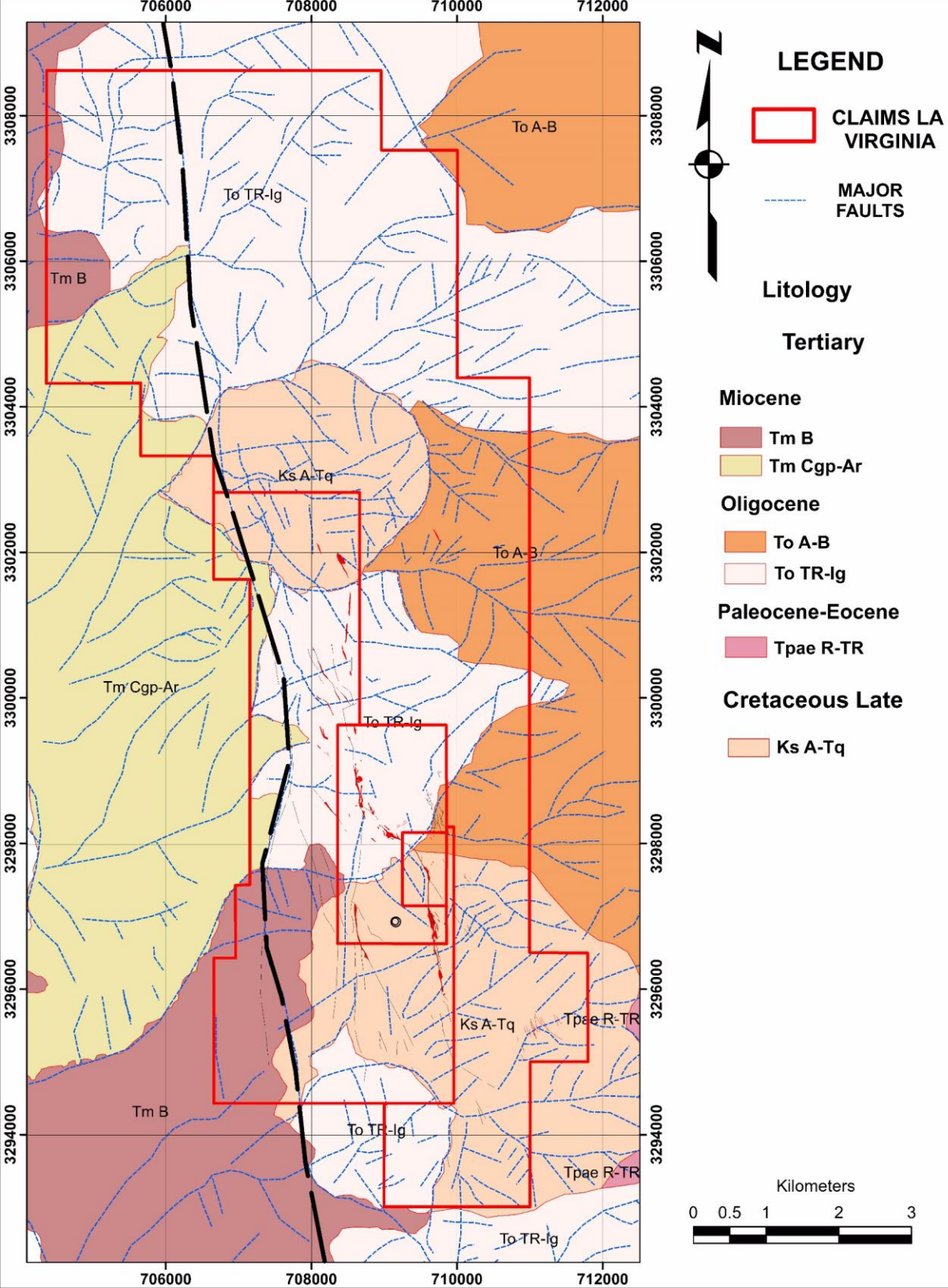


- Identified by Minefinders Corp. during 2007 reconnaissance campaign seeking Dolores-style vein and hydrothermal breccia hosted gold-silver mineralization.
- Intensive exploration drilling was completed over the Rubi-Esperanza claims by Minefinders during 2010-2012 until takeover by Pan American Silver Corp. (Pan Am).
- Historical dataset (2010-2013) contains 188 drill holes for 52,635m. Silver Viper has since added 100 drillholes for 27,000m (2018-2020).
- Rubi-Esperanza claims were complemented by large Pan American claim group of three claims subsequently acquired by Silver Viper. Strategic reduction of the three-claim package has been filed, now reduced to a single claim of 4,780 hectares. Project now totals an area of 6,882 hectares.
- Purchase Agreement with Rubi-Esperanza owners includes cash payments totaling US\$3.0M in escalating tranches over 5 years for 100% ownership; owners will retain a 2% NSR, purchasable for US\$2M within 5 years of effective date, or US\$3M after the 5<sup>th</sup> anniversary of said date.
  - June 2019 – US\$50,000 (Paid)
  - June 2020 – US\$75,000 (Paid)
  - June 2021 – US\$100,000
  - June 2022 – US\$200,000
  - June 2023 – US\$2,575,000
- Definitive Agreement with Pan Am gives Silver Viper 100% interest in the Pan Am claims and Rubi-Esperanza drill data in return for a 2% NSR project-wide.

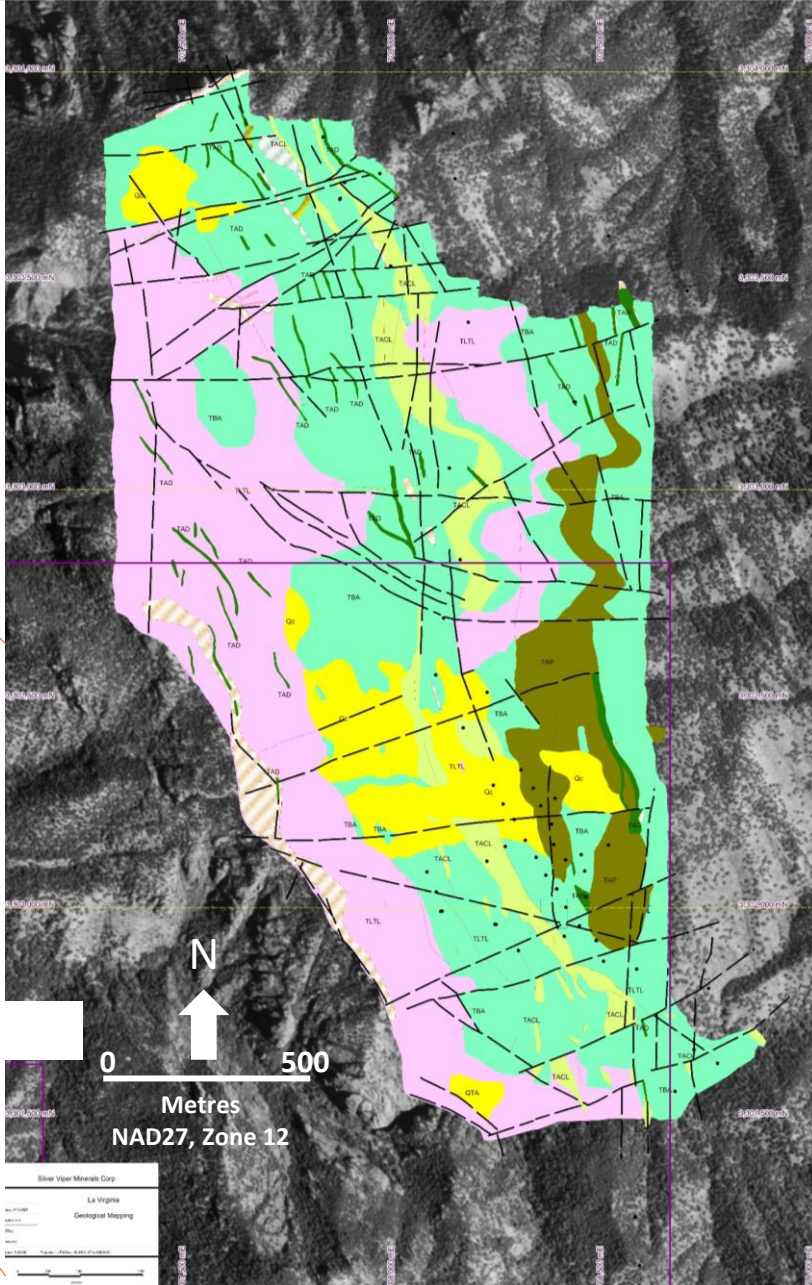
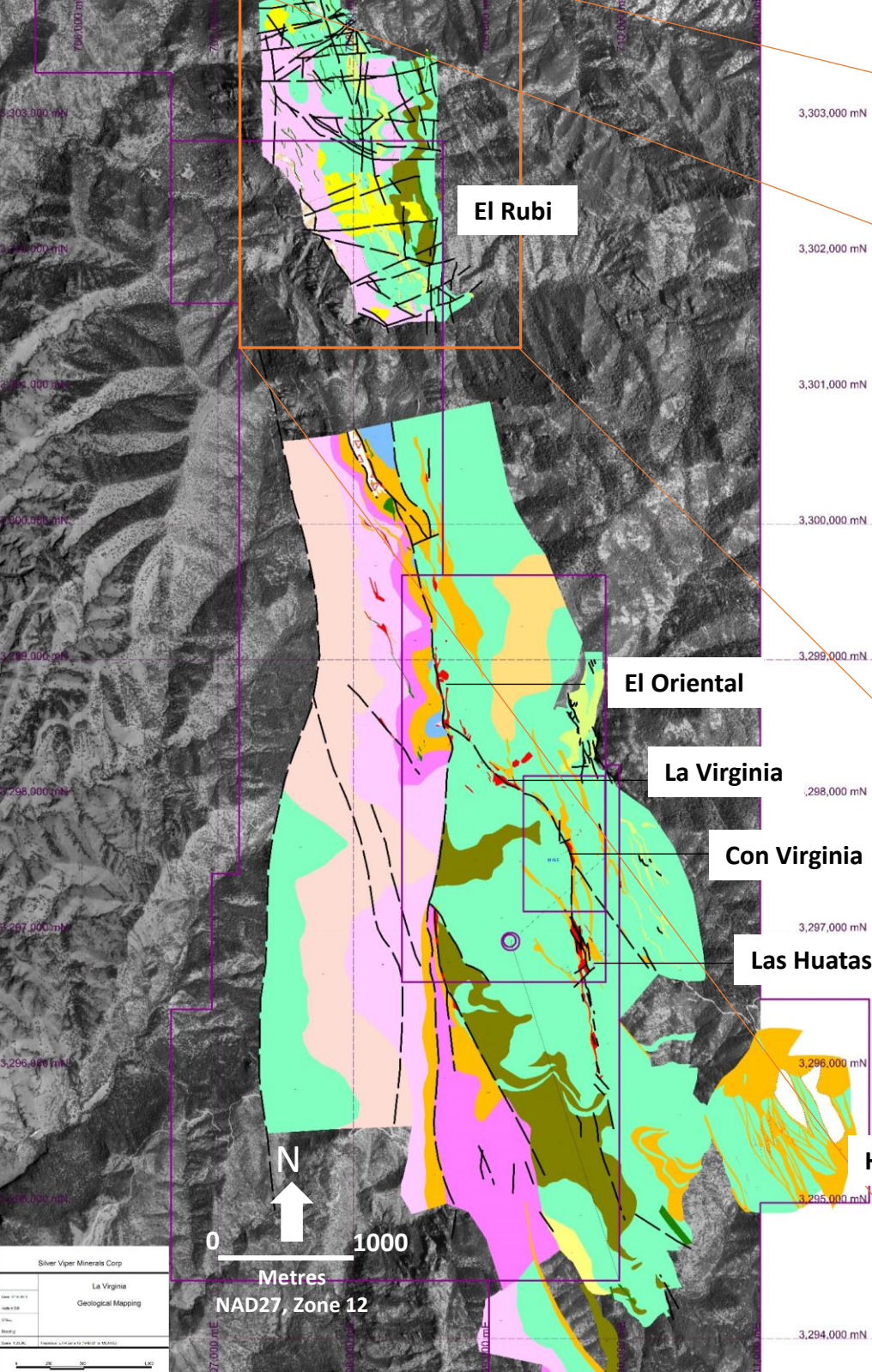


# La Virginia Project – Geological Setting

- Underexplored corner of Sonora, Mexican Geological Survey is currently working on the 50:000 geological map sheet containing La Virginia, possibly to be published this year
- The 1:50,000 interpretation presented here was completed by Silver Viper using stereographic images acquired from SGM
- Topography is dominated by NNW trending regional scale fault zone, prospective targets occur on horst block east of the main fault
- NE trending structures and N-S and E-W structures form a complex setting favourable for hosting mineralization











SILVER VIPER  
MINERALS

# El Rubi Plateau Looking North





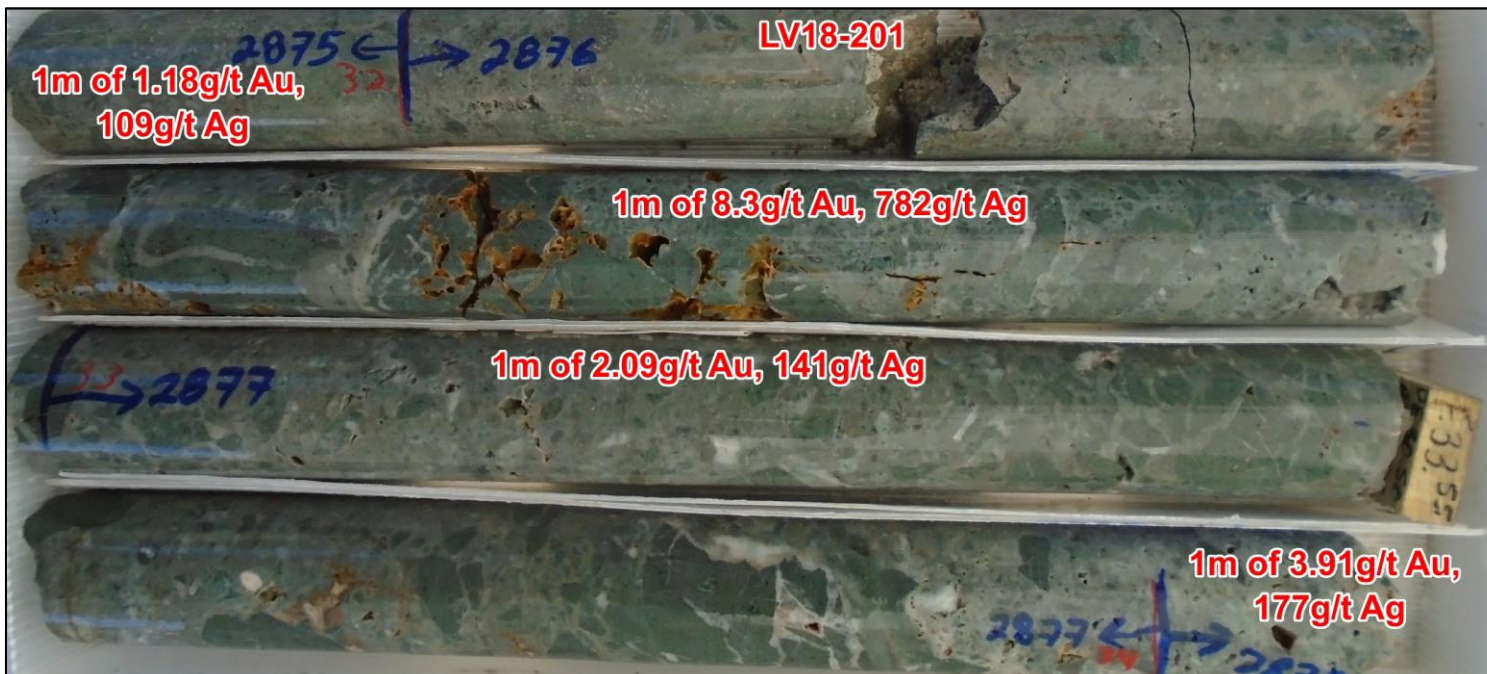


SILVER VIPER  
MINERALS

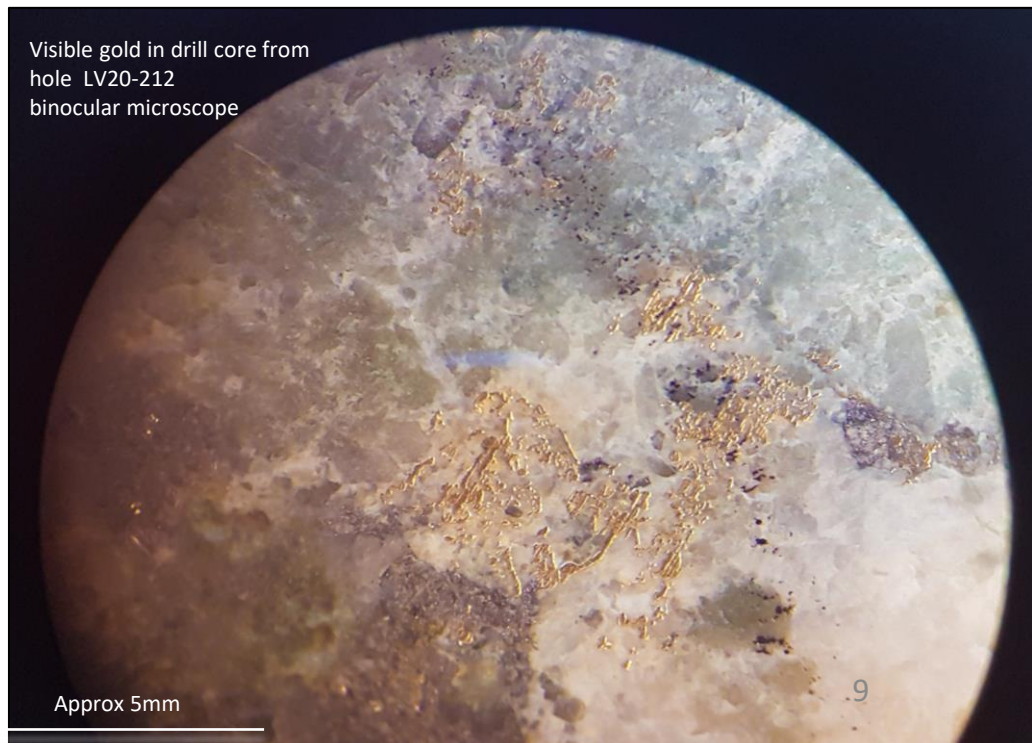
## El Rubi - Discovery



- Mineralization is structurally controlled by regional NNW trend. Interpreted as fault offset continuation of Las Huatas/La Virginia mineralized trend.
- Discovery located 2.5 kms north of the main area of historical exploration by Pan American Silver and Minefinders.
- Discovery holes at El Rubi included high-grade intercepts, including 8m downhole **averaging 9.15g/t Au and 569g/t Ag from hole LV18-218** (downhole length). With a new mineral resource estimate complete drilling is continuing to expand the mineralized zone.
- Mineralized showings continue to be evaluated and advanced along trend from El Rubi.



Visible gold in drill core from  
hole LV20-212  
binocular microscope





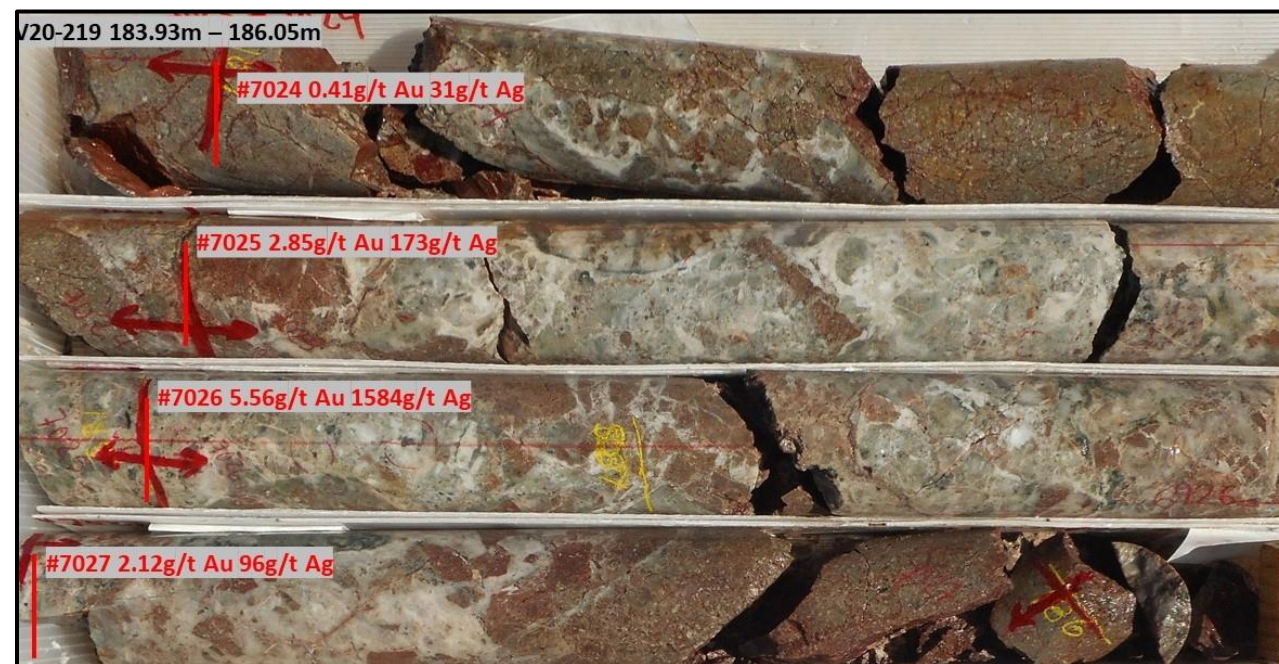


## El Rubi - Drilling Highlights

| HOLE     | From (m) | To (m) | Interval (m) | Estimated True Width (m) | Ag (g/t) | Au (g/t) | Ag Equiv (g/t) | Au Equiv (g/t) |
|----------|----------|--------|--------------|--------------------------|----------|----------|----------------|----------------|
| EL RUBI  |          |        |              |                          |          |          |                |                |
| LV18-201 | 27       | 40.3   | 13.3         | 6                        | 228      | 3.16     | 449            | 6.42           |
| and      | 32       | 33     | 1            | 0.45                     | 782      | 8.3      | 1363           | 19.47          |
| LV18-204 | 92       | 95     | 3            | 2.1                      | 235      | 4.38     | 541.6          | 7.74           |
| incl     | 94       | 95     | 1            | 0.7                      | 434      | 8.19     | 1007           | 14.39          |
| LV19-209 | 213      | 214.8  | 1.8          | 1                        | 1054     | 3.22     | 1280           | 18.28          |
| LV19-210 | 73       | 79     | 6            | 4.8                      | 216      | 1.47     | 319            | 4.55           |
| incl     | 76       | 77     | 1            | 0.8                      | 1071     | 6.32     | 1513           | 21.62          |
| LV19-211 | 188      | 192.5  | 4.5          | 3                        | 446      | 13.39    | 1384           | 19.77          |
| incl     | 189      | 190    | 1            | 0.67                     | 1923     | 58.3     | 6004           | 85.77          |
| LV20-215 | 188      | 195    | 7            | 6.3                      | 86       | 14.4     | 1094           | 15.63          |
| incl     | 193.9    | 194.4  | 0.5          | 0.45                     | 984      | 196.3    | 14725          | 210.36         |
| LV20-217 | 265.5    | 273.5  | 8            | 4.56                     | 401      | 4.45     | 713            | 10.18          |
| incl     | 270.5    | 272.5  | 2            | 1.14                     | 1436     | 15.55    | 2524           | 36.06          |
| AND      | 277.5    | 278.5  | 1            | 0.57                     | 586      | 7.49     | 1110           | 15.86          |
| AND      | 279.5    | 280.5  | 1            | 0.57                     | 91       | 7.36     | 606            | 8.66           |
| AND      | 301.5    | 303.5  | 2            | 1.14                     | 201      | 8.44     | 791            | 11.3           |
| LV20-218 | 184      | 187    | 3            | 1.89                     | 530      | 5.82     | 937            | 13.39          |
| incl     | 185      | 186    | 1            | 0.63                     | 1253     | 14.4     | 2261           | 32.3           |
| AND      | 192      | 200    | 8            | 5.04                     | 569      | 9.15     | 1210           | 17.28          |
| incl     | 194      | 197    | 3            | 1.89                     | 1431     | 22.63    | 3015           | 43.08          |
| LV20-219 | 182      | 186    | 4            | 2.84                     | 249      | 1.55     | 357            | 5.1            |
| incl     | 185      | 185.5  | 0.5          | 0.36                     | 1584     | 5.56     | 1973           | 28.2           |
| LV20-224 | 104      | 111    | 7            | 5.2                      | 80       | 3.55     | 328            | 4.69           |
| incl     | 108      | 109    | 1            | 0.74                     | 453      | 8.31     | 1035           | 14.8           |
| LV20-227 | 173.4    | 176.9  | 2.5          | 2.13                     | 135      | 2.36     | 300            | 4.29           |
| incl     | 175.4    | 175.9  | 0.5          | 0.43                     | 575      | 8.8      | 1191           | 17             |
| LV20-229 | 293      | 294.5  | 1.5          | 0.98                     | 31       | 16.8     | 1209           | 17.3           |
| incl     | 293      | 293.5  | 0.5          | 0.33                     | 40       | 43.7     | 3099           | 44.3           |
| LV20-245 | 174      | 176    | 2            | 1                        | 658      | 16.3     | 1797           | 25.67          |
| LV20-277 | 131.5    | 133    | 1.5          | 0.96                     | 493      | 9.46     | 1155           | 16.50          |
| LV20-283 | 233.5    | 236    | 2.5          | 1.6                      | 67       | 33.8     | 2433           | 34.76          |
| LV20-284 | 79       | 126    | 47           | 28.95                    | 44       | 0.77     | 98             | 1.40           |
| incl     | 81       | 82.35  | 1.35         | 0.83                     | 329      | 5.39     | 706            | 10.1           |
| AND      | 103      | 106    | 3            | 1.85                     | 170      | 2.95     | 377            | 5.38           |
| AND      | 138      | 139    | 1            | 0.62                     | 324      | 8.54     | 922            | 13.2           |
| AND      | 317.5    | 319    | 1.5          | 0.92                     | 231      | 11.8     | 1057           | 15.1           |
| LV21-289 | 280.5    | 410.5  | 130          | 80.08                    | 18       | 0.69     | 67             | 0.95           |
| incl     | 292.38   | 293.5  | 1.12         | 0.69                     | 172      | 9.9      | 865            | 12.4           |
| incl     | 321.4    | 323.5  | 2.1          | 1.29                     | 123      | 6.55     | 582            | 8.32           |
| AND      | 418.2    | 437.5  | 19.3         | 11.89                    | 363      | 21.2     | 1849           | 26.4           |
| incl     | 428.7    | 430.2  | 1.5          | 0.92                     | 3917     | 252      | 21541          | 308            |
| (incl)   | 429.2    | 429.7  | 0.5          | 0.31                     | 10681    | 738      | 62369          | 891            |

- High grade assays in most recent drilling include:

- LV21-289; 738 g/t Au and 10,681 g/t Ag over 0.5m (downhole)
- LV20-284; 11.8 g/t Au and 231 g/t Ag over 1.5m (downhole)
- LV20-283; 33.8 g/t Au and 67 g/t Ag over 2.5m (downhole)
- LV20-218; 22.6 g/t Au and 1,431 g/t Ag over 3.0m (downhole)
- LV20-217; 15.55 g/t Au and 1,436 g/t Ag over 2.0m (downhole)
- LV20-215; 196.3 g/t Au and 984 g/t Ag over 0.5m (downhole)
- LV19-211; 58.3 g/t Au and 1923 g/t Ag over 1m (downhole)



Results taken from Silver Viper News Releases dated January 17 2019, January 13, 2020, February 12, 2020, February 25 2020 and March 1 2021.

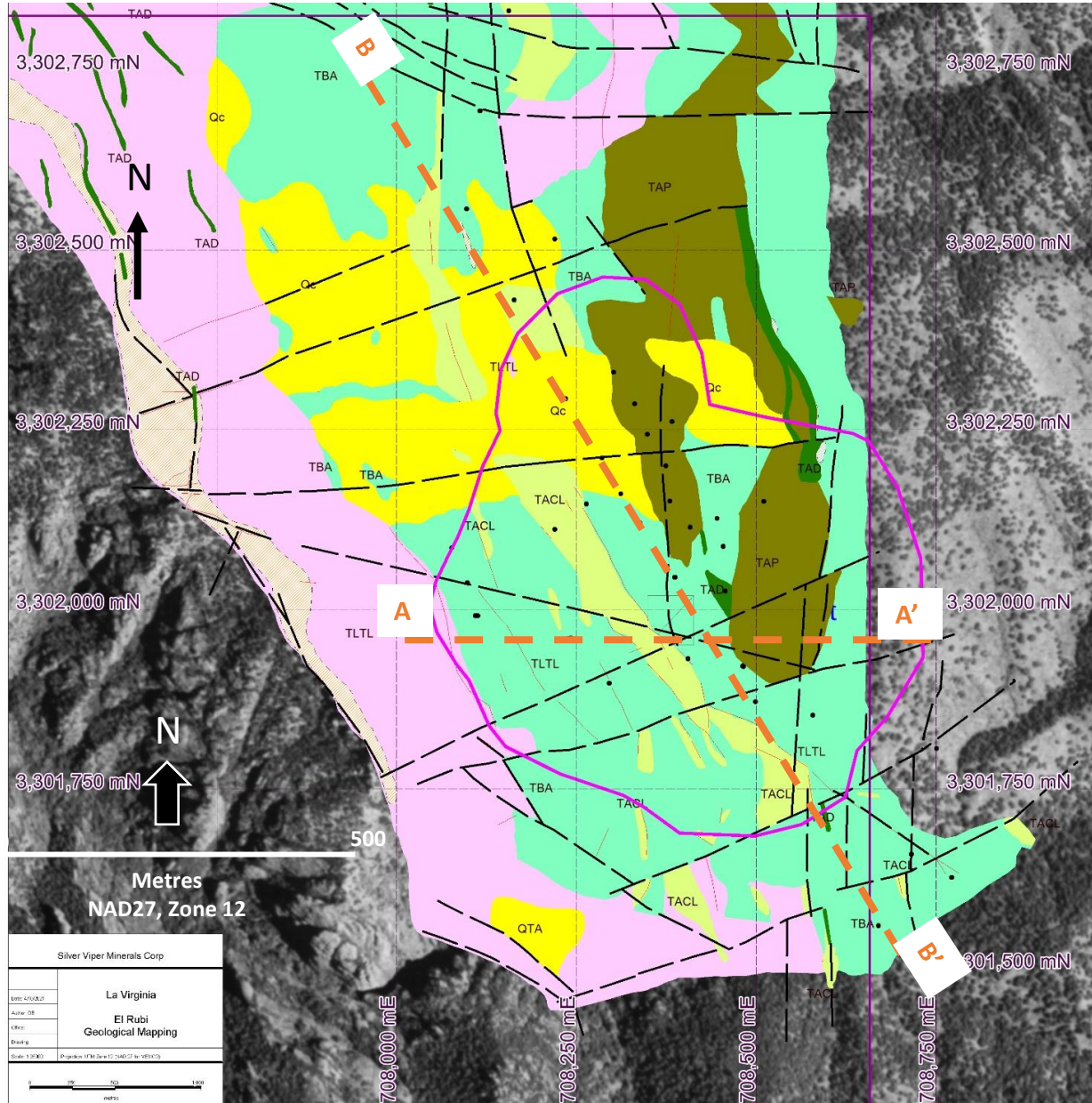
True Widths estimated, Ag Eq calculated using Ag:Au ratio of 70:1, exploration drill results, no recovery or metallurgical parameters have been applied.





SILVER VIPER  
MINERALS

# La Virginia Project – El Rubi Drilling showing Whittle pit shell outline

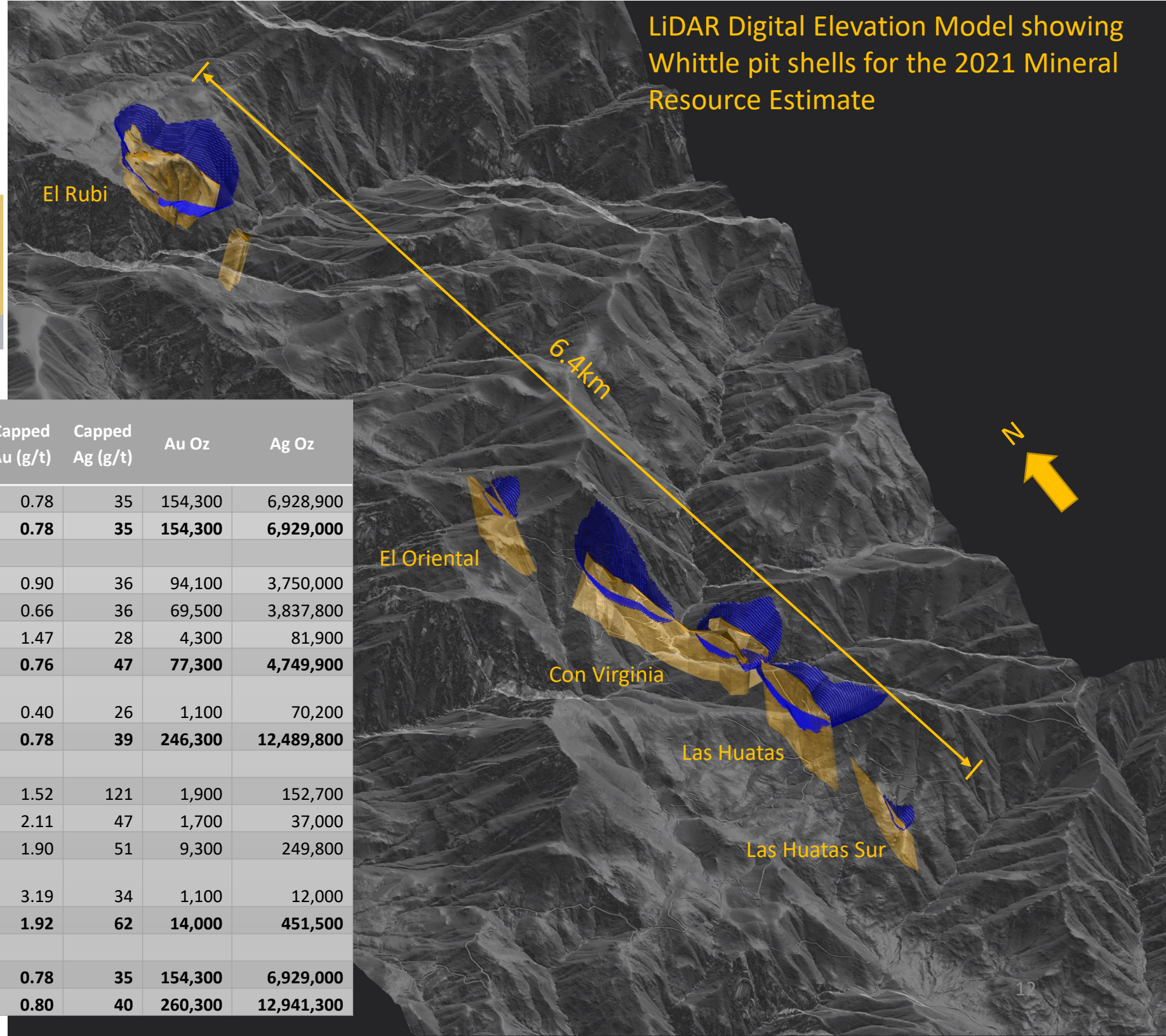






SILVER VIPER  
MINERALS

## 2021 Mineral Resource Estimate



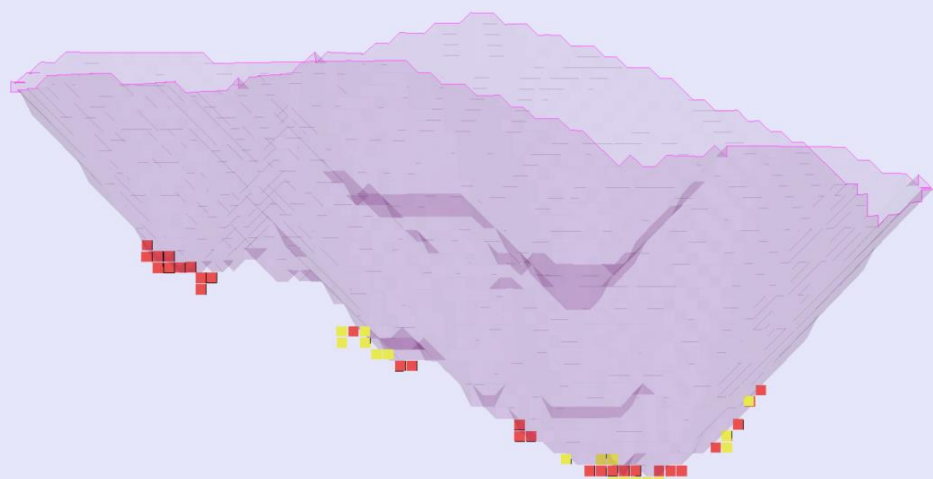
| Deposit      | Method      | Class     | Tonnes     | Capped Au (g/t) | Capped Ag (g/t) | Au Oz   | Ag Oz      |
|--------------|-------------|-----------|------------|-----------------|-----------------|---------|------------|
| El Rubi      | Open pit    | Indicated | 6,179,000  | 0.78            | 35              | 154,300 | 6,928,900  |
| Total        | Open Pit    | Indicated | 6,179,000  | 0.78            | 35              | 154,300 | 6,929,000  |
| El Rubi      | Open pit    | Inferred  | 3,255,000  | 0.90            | 36              | 94,100  | 3,750,000  |
| Con Virginia | Open Pit    | Inferred  | 3,279,000  | 0.66            | 36              | 69,500  | 3,837,800  |
| El Oriental  | Open Pit    | Inferred  | 91,000     | 1.47            | 28              | 4,300   | 81,900     |
| Las Huatas   | Open Pit    | Inferred  | 3,169,000  | 0.76            | 47              | 77,300  | 4,749,900  |
| Las Huatas S | Open Pit    | Inferred  | 83,000     | 0.40            | 26              | 1,100   | 70,200     |
| Total        | Open pit    | Inferred  | 9,877,000  | 0.78            | 39              | 246,300 | 12,489,800 |
| Con Virginia | Underground | Inferred  | 39,000     | 1.52            | 121             | 1,900   | 152,700    |
| El Oriental  | Underground | Inferred  | 25,000     | 2.11            | 47              | 1,700   | 37,000     |
| Las Huatas   | Underground | Inferred  | 152,000    | 1.90            | 51              | 9,300   | 249,800    |
| Las Huatas S | Underground | Inferred  | 11,000     | 3.19            | 34              | 1,100   | 12,000     |
| Total        | Underground | Inferred  | 227,000    | 1.92            | 62              | 14,000  | 451,500    |
| Total        |             | Indicated | 6,179,000  | 0.78            | 35              | 154,300 | 6,929,000  |
| Total        |             | Inferred  | 10,104,000 | 0.80            | 40              | 260,300 | 12,941,300 |





SILVER VIPER  
MINERALS

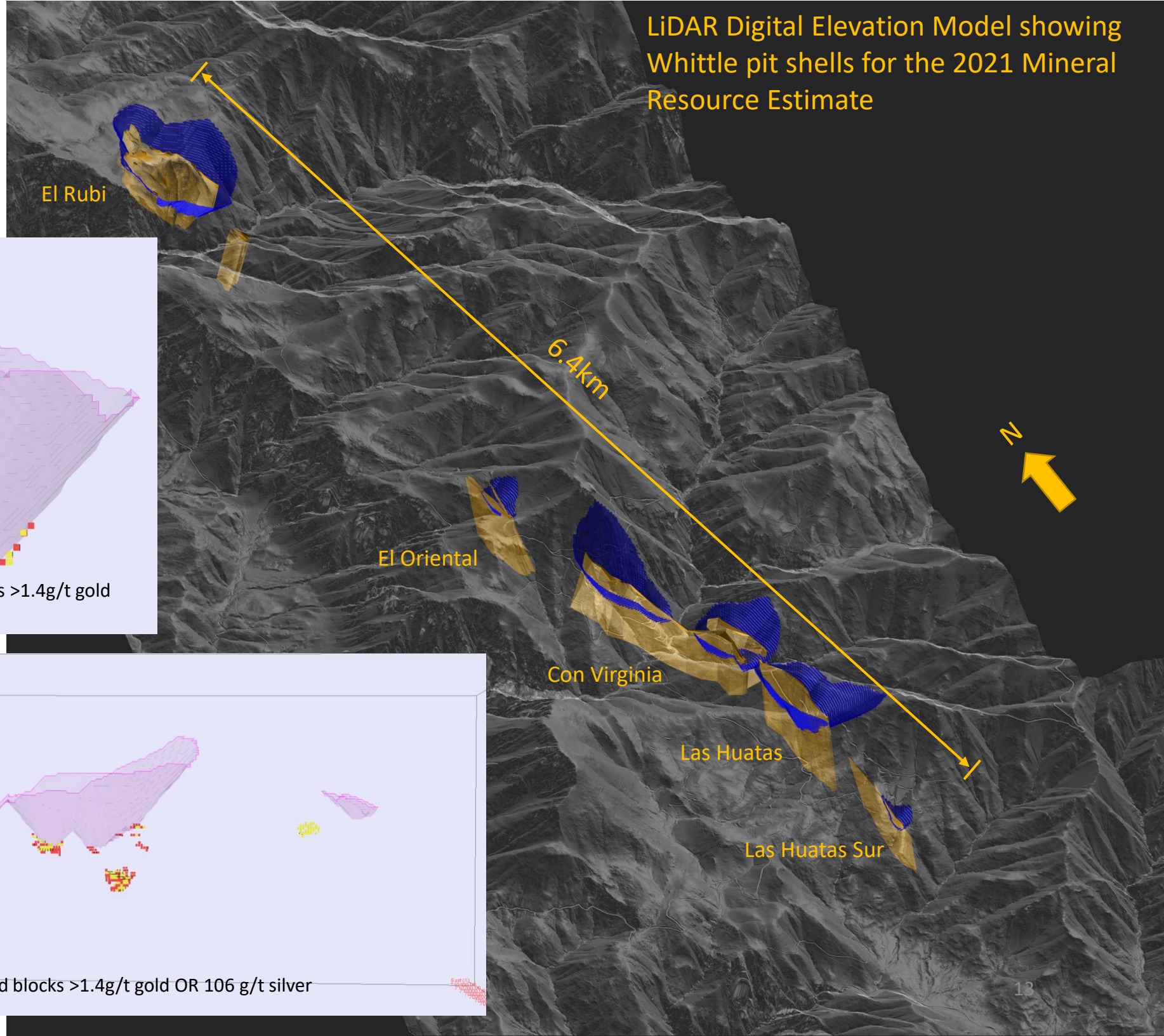
May 201 Mineral Resource Estimate



Long section showing El Rubi pit shell with underground blocks >1.4g/t gold OR 106 g/t silver

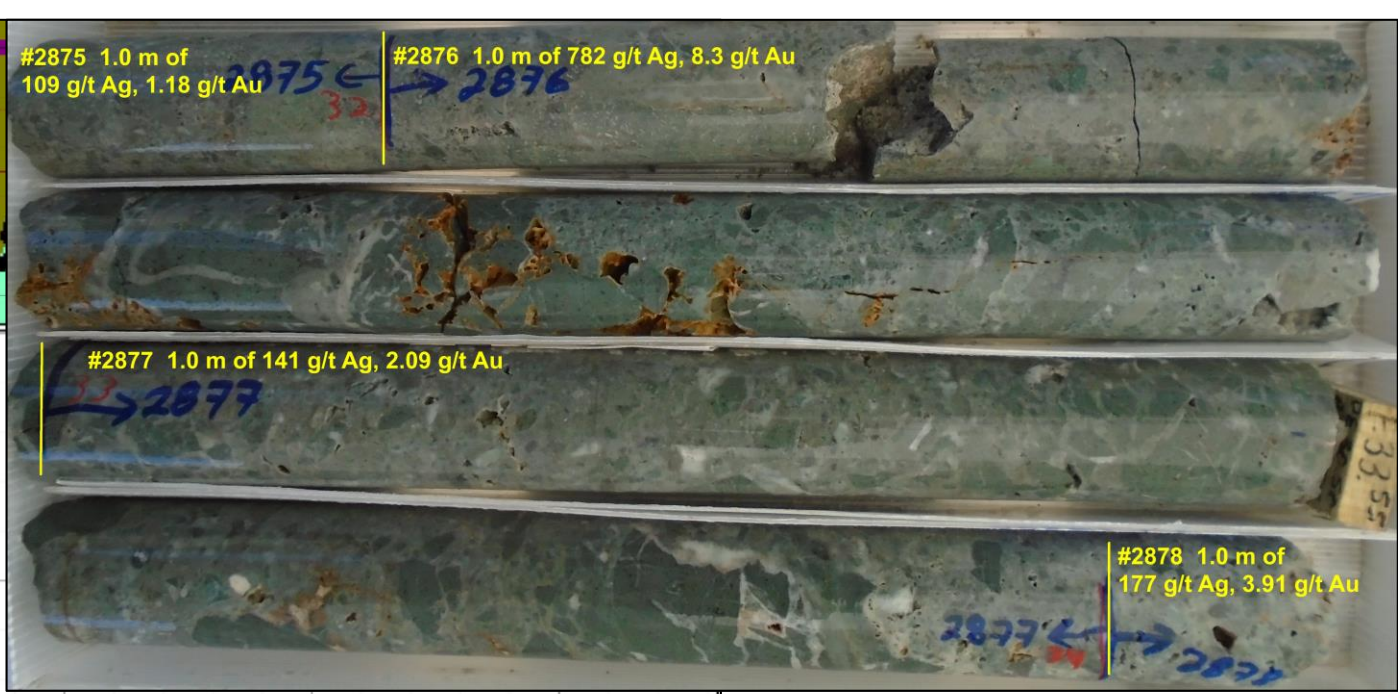
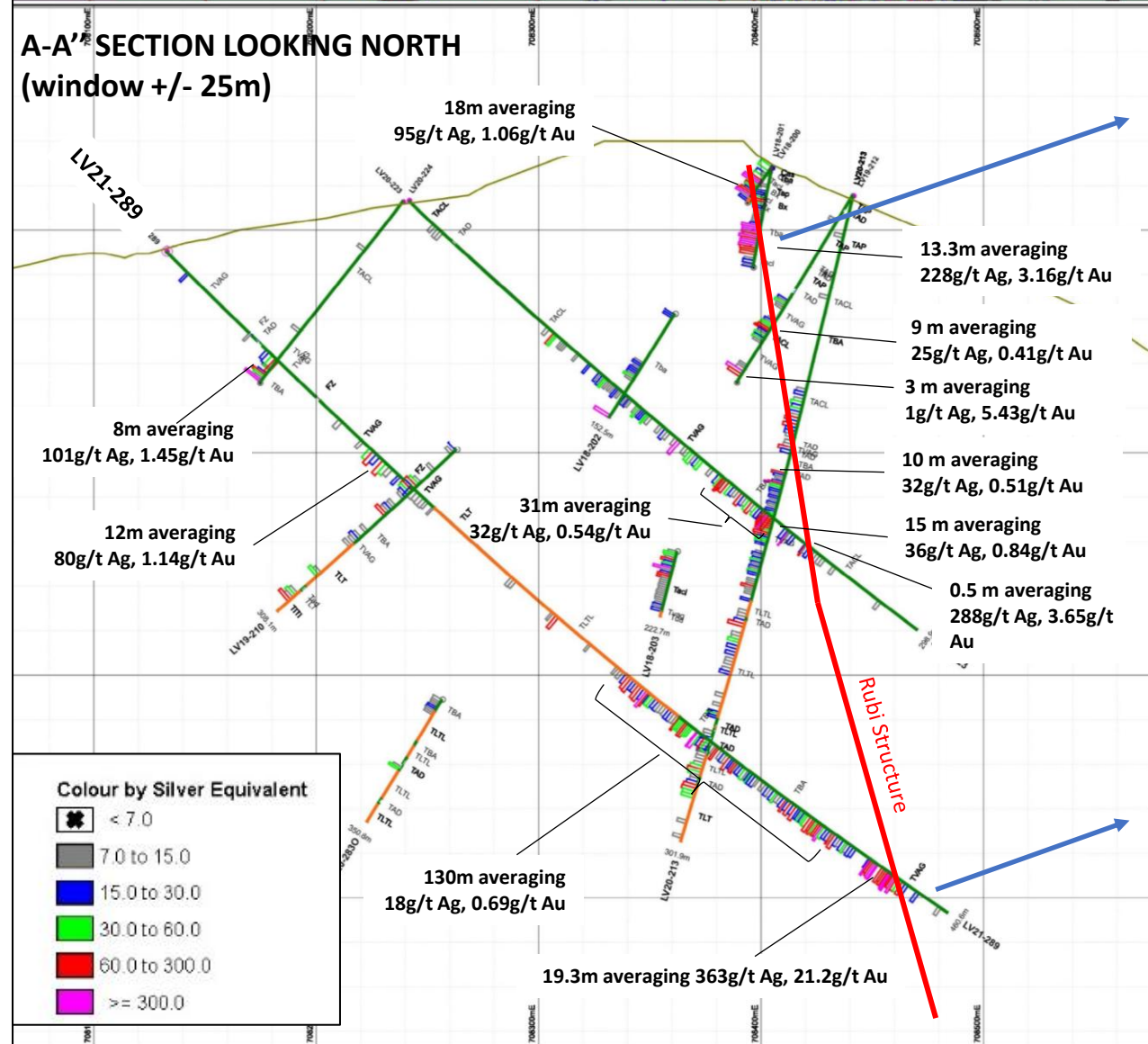
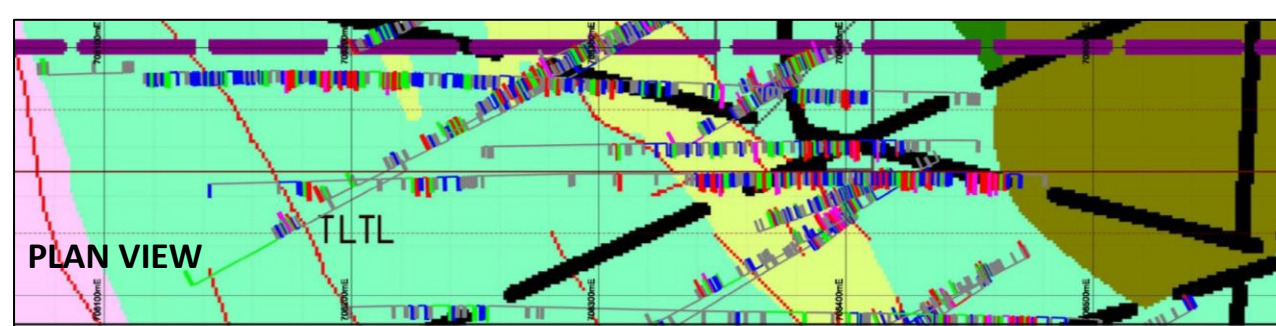


Long section showing southern resource area underground blocks >1.4g/t gold OR 106 g/t silver



LiDAR Digital Elevation Model showing  
Whittle pit shells for the 2011 Mineral  
Resource Estimate









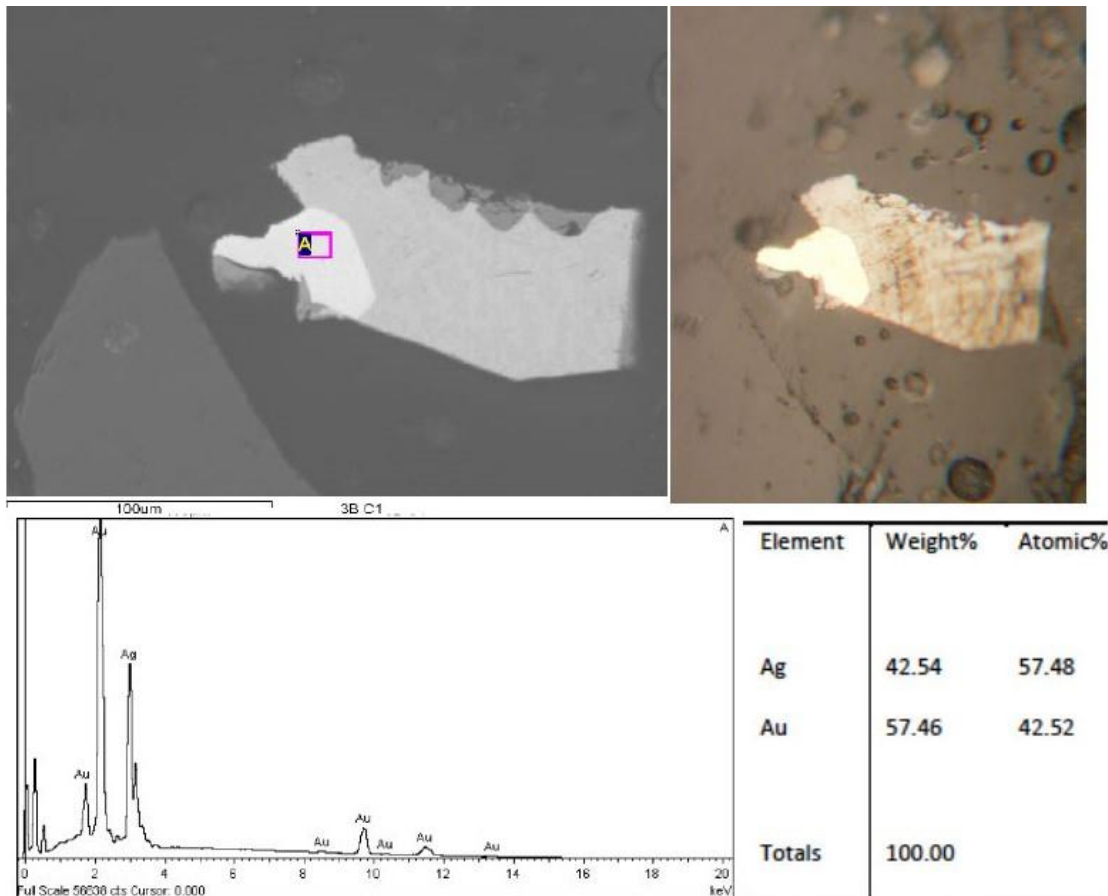




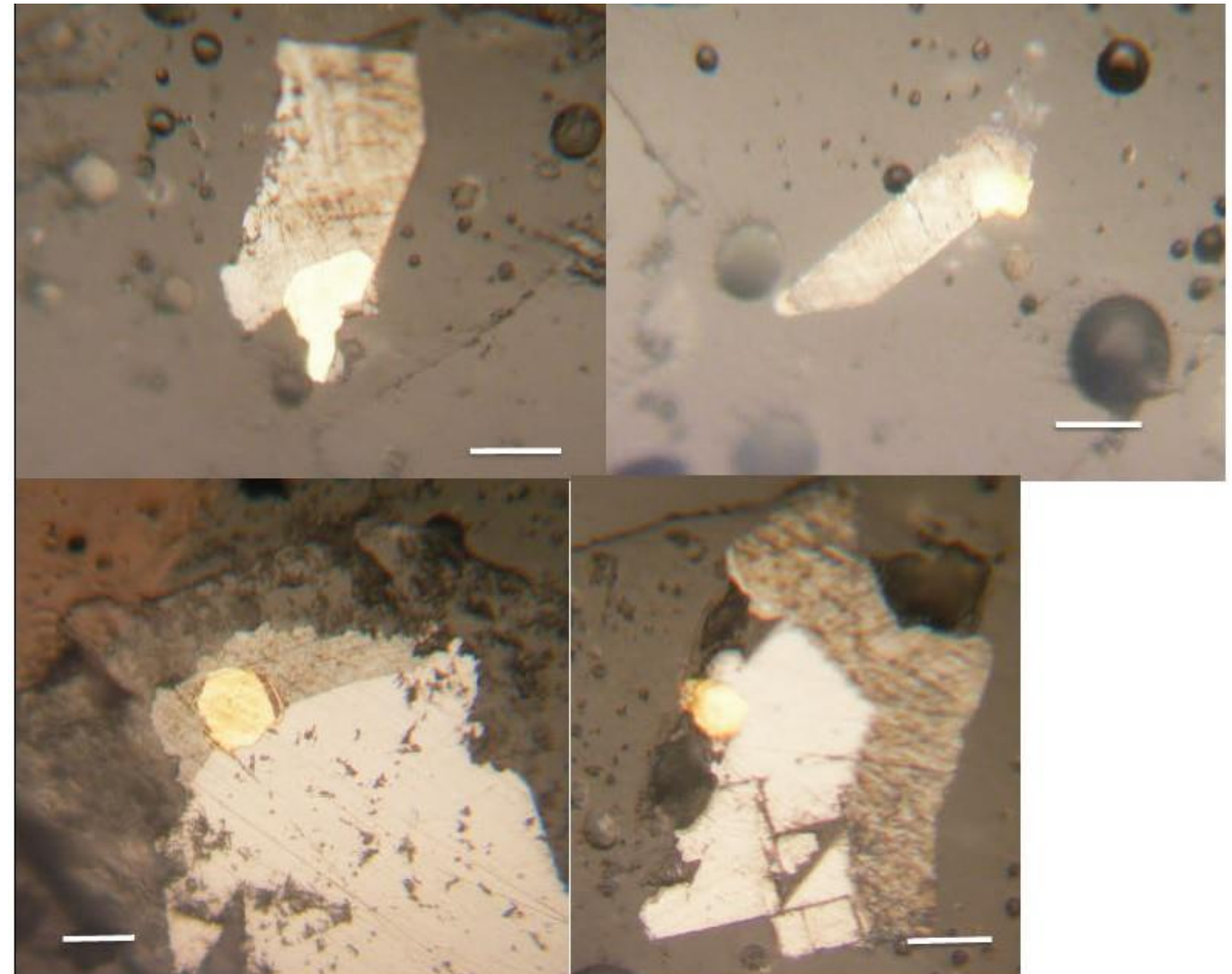
SILVER VIPER  
MINERALS

# El Rubi Scanning Electron Microscopy

- Preliminary Scanning Electron Microscope study of drill core samples shows silver reports as sulphides in Argentite and alloyed with gold in the form of Electrum.



Arriba izquierda, imagen al MEB en electrones retrodispersados, partícula de oro y argentita (observar escala); arriba derecha, fotomicrografía al microscopio en luz reflejada. Abajo, espectro EDS y composición de oro en la zona analizada.



Arriba, oro con argentita. Abajo, oro con argentita y galena. La escala representa 0.020 mm (20 µm)

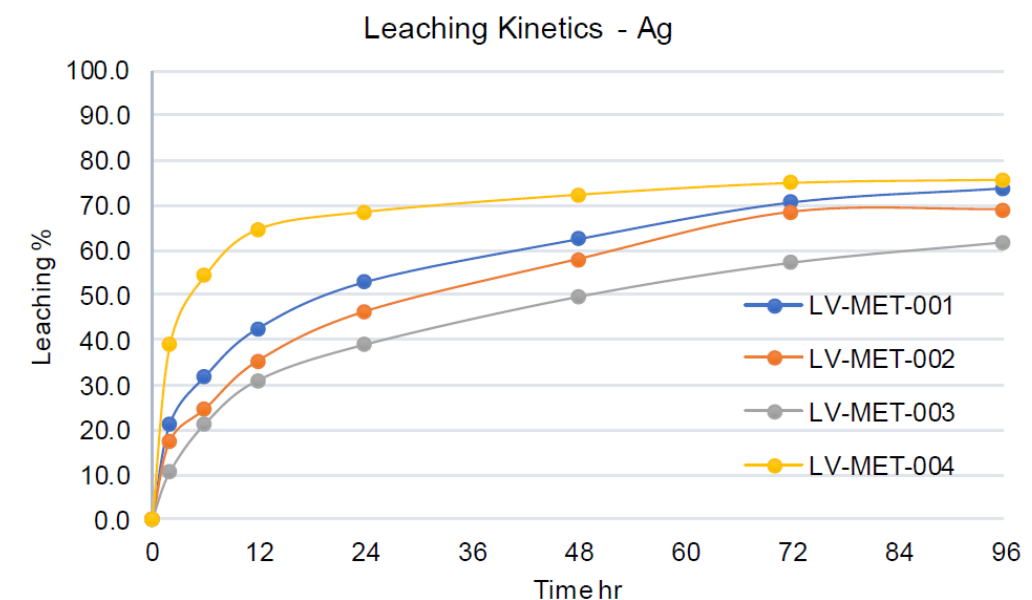
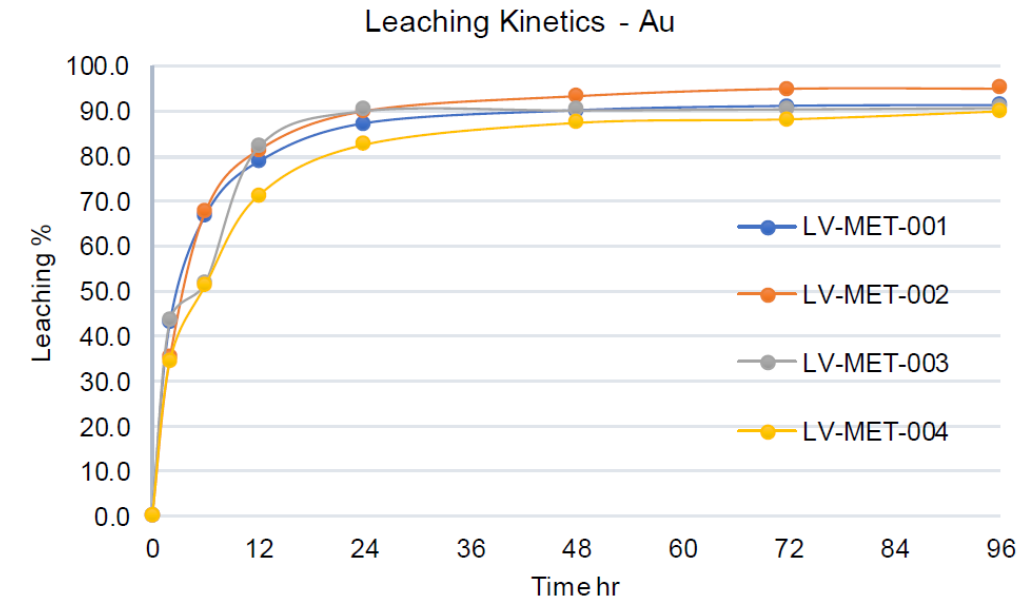




# El Rubi Preliminary Metallurgical Test Work

- Bottle roll tests were conducted on four 500g composites.
- Initial round designed as a simple test to confirm amenability to conventional treatment methods.
- Analyses detected nugget gold effect in high grade sample LV-MET-002.
- Recoveries ranged from 90.0% - 95.1% for gold, and 61.9% - 75.9% for the initial test.
- Tests confirm leachability of material from El Rubi.
- Subsequent optimization work is expected to **significantly increase** silver recoveries.

| Description          | LV-MET-001  |             | LV-MET-002  |             | LV-MET-003  |             | LV-MET-004  |             |
|----------------------|-------------|-------------|-------------|-------------|-------------|-------------|-------------|-------------|
|                      | Au g/t      | Ag g/t      | Au g/t      | Ag g/t      | Au g/t      | Ag g/t      | Au g/t      | Ag g/t      |
| Calculated Head      | 2.16        | 160.9       | 4.65        | 274.4       | 3.29        | 220.7       | 0.60        | 41.5        |
| Head Assay           | 2.62        | 170.0       | 8.28        | 263.0       | 3.98        | 217.0       | 0.65        | 36.0        |
| Residue              | 0.19        | 42.0        | 0.23        | 85.0        | 0.30        | 84.0        | 0.06        | 10.0        |
| Leaching             | Au %        | Ag %        | Au %        | Ag %        | Au %        | Ag %        | Au %        | Ag %        |
|                      | <b>91.2</b> | <b>73.9</b> | <b>95.1</b> | <b>69.0</b> | <b>90.9</b> | <b>61.9</b> | <b>90.0</b> | <b>75.9</b> |
| Reagents Consumption | NaCN kg/t   | CaO kg/t    | NaCN kg/t   | CaO kg/t    | NaCN kg/t   | CaO kg/t    | NaCN kg/t   | CaO kg/t    |
|                      | 1.4         | 2.6         | 1.3         | 1.8         | 1.1         | 1.6         | 1.1         | 2.0         |

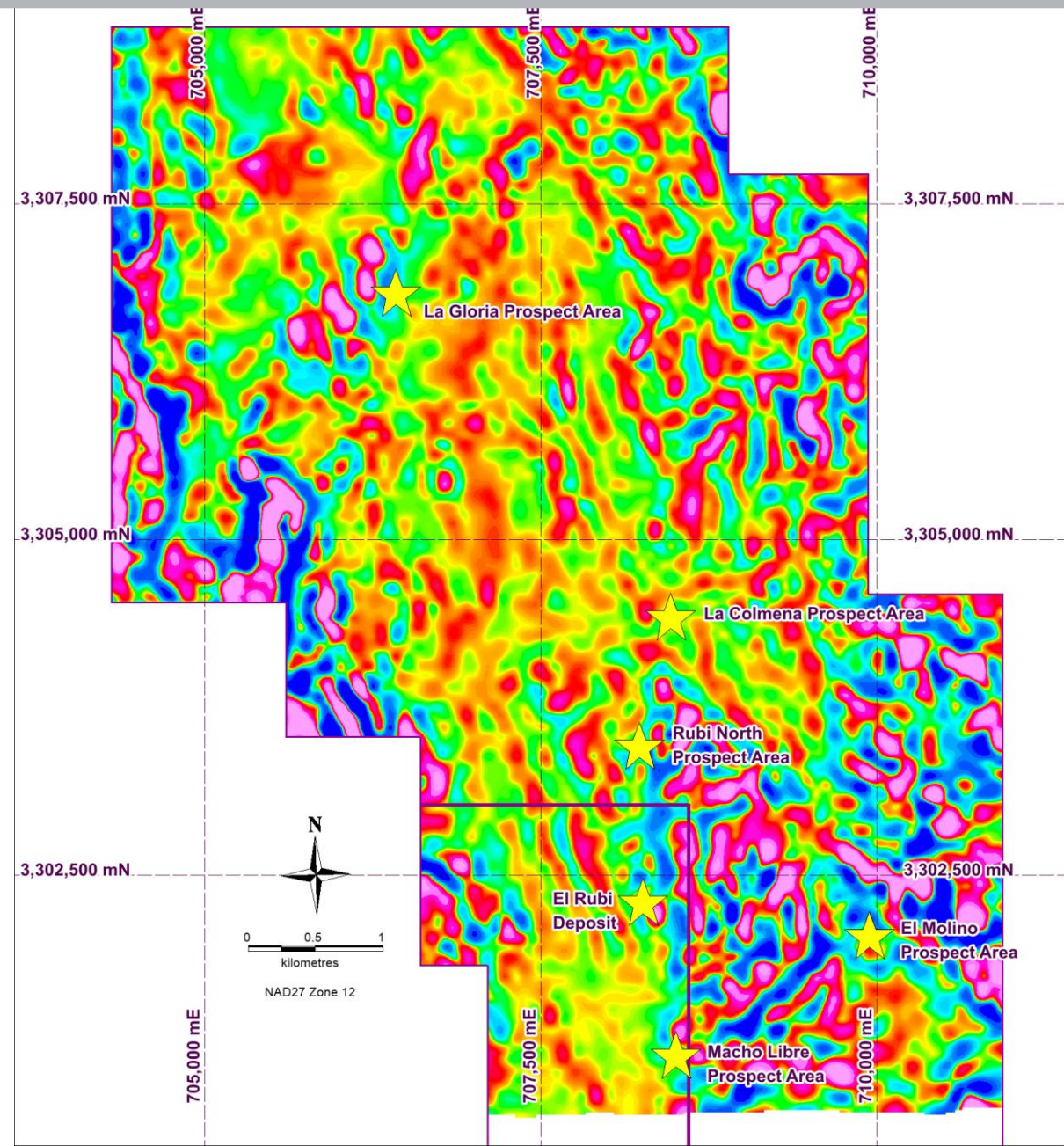






## El Rubi – Prospective Targets

- Image depicted shows aeromagnetic data – Calculated Vertical Derivative (Magnetics Reduced to Pole)
- El Rubi Surface Program includes reconnaissance mapping, soil sampling and prospecting across the property
- Airborne magnetic survey indicates prospective extensions north and southward from El Rubi
- Exploration continues to refine prospective target areas in advance of diamond drilling
- Silver Viper is working with Quantec to design and preliminary surface geophysics. 3DIP and deep sensing Magnetotellurics are being considered to continue exploration of the El Rubi mineralized system







## Management & Directors

*Silver Viper's management team, is part of the **Belcarra Group**, is an organization comprised of technical and capital markets professionals in the mining industry. Our model focusses on exploration and as such can draw on the knowledge of our 4 in-house senior geologists with their 150 years of combined experience to identify opportunities to discover and develop quality exploration projects that maximize shareholder value. We are the same team recognized for the **discovery** of Orko Silver Corp's **La Preciosa Silver-Gold Deposit** in Durango, Mexico which we began as a grass roots project, proved up over 270 million ounce of silver and sold to Coeur Mining for over \$350 million.*

| Board of Directors, Management and Technical Team |                              |          |
|---|------------------------------|----------|
| Gary Cope   | Chairman of the Board        | Director |
| Steve Cope  | President & CEO              | Director |
| Carla Hartzenberg, CPA,CA                         | CFO                          | Director |
| Dale Brittliffe, P.Geo                            | Vice President, Exploration  |          |
| Alicia Ford                                       | Manager Business Development |          |
| Ben Whiting, P.Geo                                | Technical Advisor            |          |
| Art Freeze, P.Geo                                 |                              | Director |
| Ross Wilmot, CPA, CA                              |                              | Director |





# Share Structure

## Capital Structure

|                                  |         |
|----------------------------------|---------|
| Shares Outstanding               | 94.77M  |
| Warrants (exercise price \$0.57) | 13.33M  |
| Options (average price \$0.48)   | 7.76M   |
| Fully Diluted Shares             | 115.86M |

## Notable and Major Shareholders

|   |     |
|---|-----|
| Institutional   | 60% |
| <ul style="list-style-type: none"><li>US Global Investors</li><li>Ingalls and Snyder Brokerage Accounts</li><li>Sprott Asset Management</li><li>Donald Smith &amp; Co Value Add Fund</li><li>Contrarian Group</li><li>Commodity Capital</li></ul> |     |
| Management  | 23% |
| Retail  | 17% |

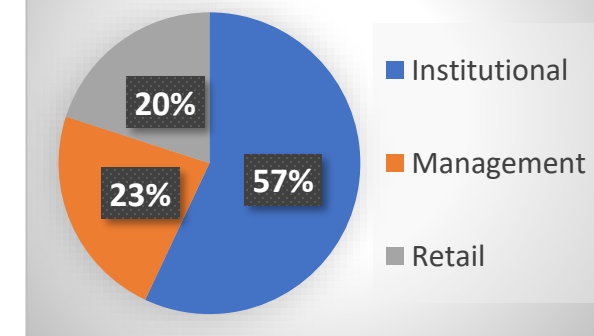
## Silver Viper Minerals Corp.

|               |         |
|---------------|---------|
| TSX.V Listing | VIPR    |
| OTCQB Listing | VIPRF   |
| Current Price | \$0.53  |
| Cash          | ~\$4.5M |

## Research Coverage

|                      |              |
|----------------------|--------------|
| Red Cloud Securities | David Talbot |
|----------------------|--------------|

## Ownership







- ✓ **High Quality Asset** - historic work and database
- ✓ **Mining Friendly Jurisdiction** – Mexico's top gold producing state
- ✓ **Management and Technical Team** - history of making discoveries and delivering value
- ✓ **Blue Sky Potential** – expanding El Rubi discovery and testing new targets
- ✓ **Strong Shareholder Support** - with management and institutional owning over 80%





SILVER VIPER  
MINERALS

## Contact Us



Silver Viper Minerals Corp



Suite 1130 - 1055 W. Hastings Street  
Vancouver, BC Canada V6E 2E9



(604) 687-8566



(604) 687-6365



[info@silverviperm minerals.com](mailto:info@silverviperm minerals.com)



[www.silverviperm minerals.com](http://www.silverviperm minerals.com)